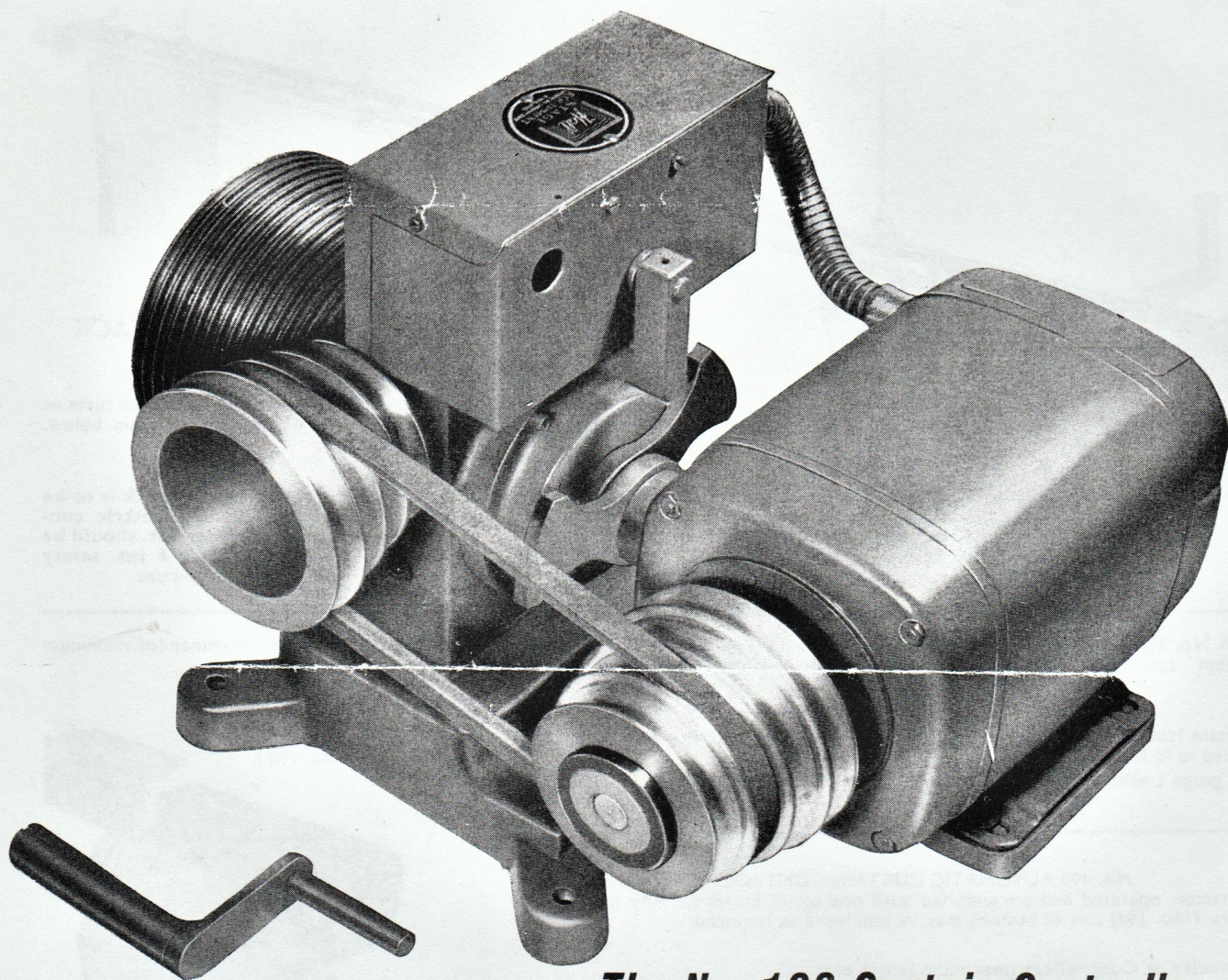


THEATRE STAGE CURTAIN TRACKS AND CONTROLLERS

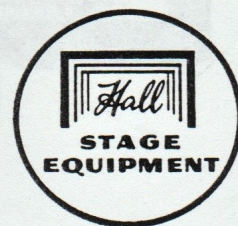


The No. 198 Curtain Controller

"HALL" No. 198 automatic curtain controllers are powered by a totally enclosed motor mounted on a hinged bracket arranged for automatic belt tension and easy changeover from one speed to another. The "Vee" drive provides four selective speeds between the motor and the totally enclosed worm reduction gear box. This gearbox is fitted with ball bearings on both shafts. The worm wheel is of phosphor-bronze accurately generated and the work shaft is of high tensile steel. Epicyclic gearing is provided between the main shaft and the limit gear. The limits are cam operated and very easily adjusted.

SPECIAL NOTE:

**FOR ALL ELECTRICALLY OPERATED CURTAINS WE
RECOMMEND THE No. 292 (WHEEL RUNNER) TRACK**



Leaflet No. 100

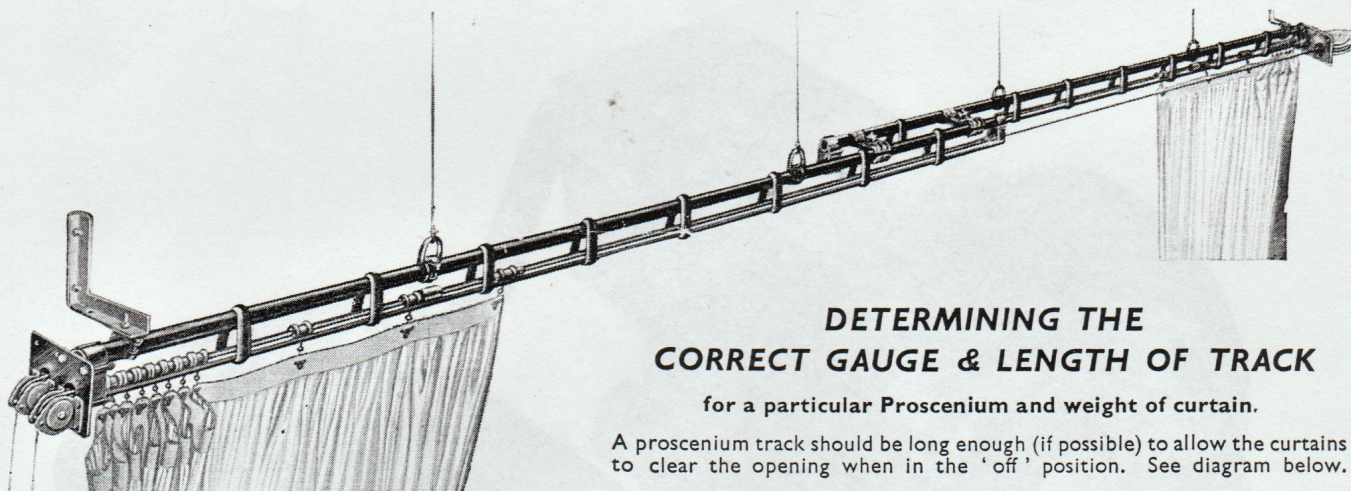
HALL STAGE EQUIPMENT LIMITED. BRIXTON. LONDON. S.W.9. ENGLAND

HALL STAGE CURTAIN TRACKS

No. 292 with Wheel Runners.

No. 220 with Sliding Bobbins.

These tubular curtain tracks are recommended for all stage curtains and are reliable in every way. They are supplied complete with runners (or bobbins), pulleys, adjustable overlap clips, stops, suspension clips and hauling line. Hall curtain tracks may be operated either by endless cord (termed cord-working) or by flexible steel cable (termed cable-working).



DETERMINING THE CORRECT GAUGE & LENGTH OF TRACK

for a particular Proscenium and weight of curtain.

A proscenium track should be long enough (if possible) to allow the curtains to clear the opening when in the 'off' position. See diagram below.

For proscenium opening up to 20 ft. wide the track should be 3 ft. longer than size "V"

"	"	"	21 ft.	"	30 ft.	"	"	"	"	"	4 ft.	"	"	"	"
"	"	"	31 ft.	"	40 ft.	"	"	"	"	"	6 ft.	"	"	"	"
"	"	"	41 ft.	"	50 ft.	"	"	"	"	"	7 ft. 6 ins.	"	"	"	"
"	"	"	51 ft.	"	60 ft.	"	"	"	"	"	9 ft.	"	"	"	"

NOTE: When a track is to be operated by an electric controller a further 1 ft. should be added to give a 6 ins. safety margin for over-run.

Both No. 292 and No. 220 Curtain Tracks are made in three gauges—EL., L., and H., which have the following recommended maximum 'beam' span and carrying capacity. For dimensions and weights of curtains see opposite page.

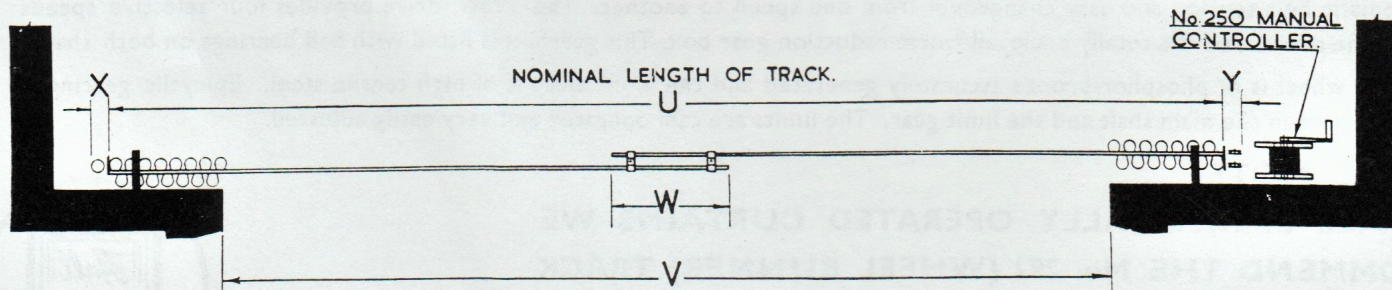
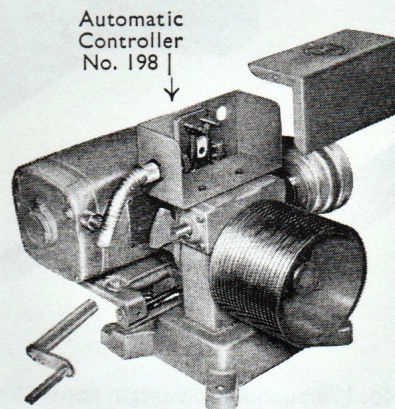
Curtain Hooks No. 287 are specially designed for stage curtains and should be spaced as follows.

EL. gauge tracks 9" centres. L. and H. gauge tracks 1' 0" centres.

No. 198 AUTOMATIC CURTAIN CONTROLLERS are push button contactor operated and are supplied with one set of buttons. Any number of extra (No. 191) sets of buttons may be employed as required.

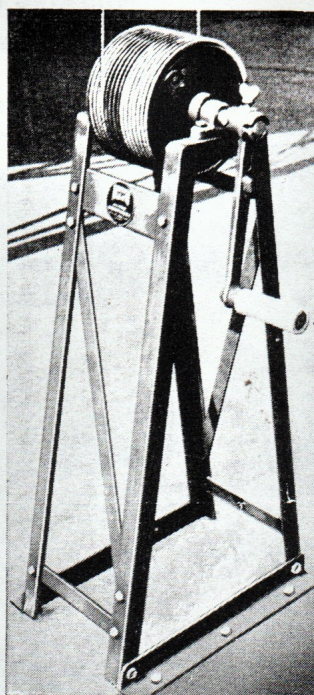
Capacity of Controllers (maximum length of track).

No.		No. 251/4" up to 17 ft.	No. 250/6" up to 36 ft.
198A	40 ft.	251/6" 36 ft.	250/8" 55 ft.
198B	55 ft.	251/8" 55 ft.	250/10" 70 ft.
198C	70 ft.		



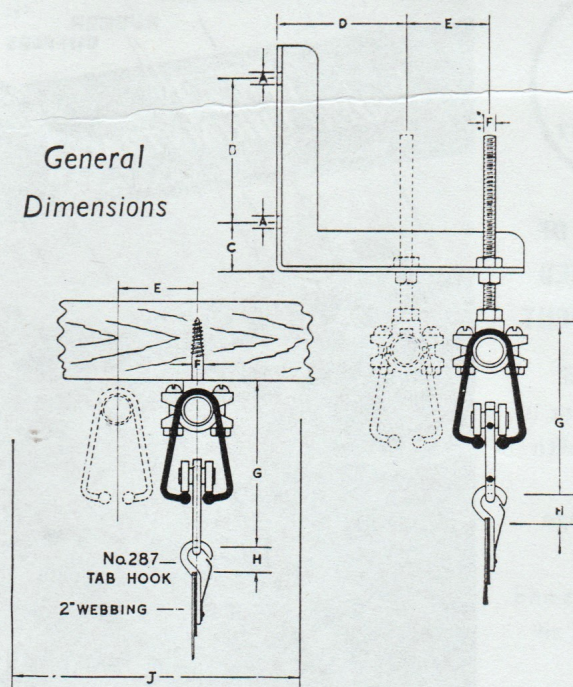
GAUGE OF TRACK			
	EL	L	H
DIMENSION			
A	$\frac{5}{16}$ "	$\frac{3}{8}$ "	$\frac{9}{16}$ "
B	4"	$4\frac{1}{2}$ "	$6\frac{1}{2}$ "
C	$1\frac{1}{4}$ "	$1\frac{1}{2}$ "	$1\frac{1}{2}$ "
D	3"	4"	6"
E	$1\frac{3}{4}$ "	$2\frac{1}{2}$ "	$2\frac{3}{4}$ "
F	$\frac{1}{4}$ "	$\frac{3}{8}$ "	$\frac{1}{2}$ "
G	$3\frac{3}{4}$ "	$5\frac{1}{2}$ "	$6\frac{1}{4}$ "
H	$\frac{3}{4}$ "	$\frac{3}{4}$ "	$\frac{3}{4}$ "
J*	6"	9"	12"

* Minimum recommended clearance.

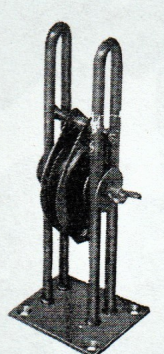


No. 250 FLOOR WINCH.

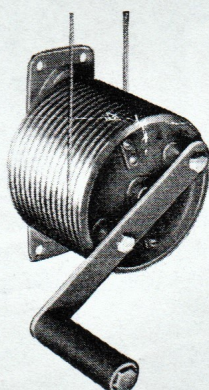
General Dimensions



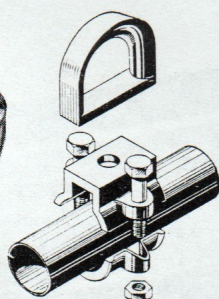
Catalogue No.	Maximum Length of Track	Maximum Span between Suspensions	Maximum load per Runner	Maximum weight of Curtains	Overlap W	X	Y	Recommended Alternative Methods of Operating
292 EL/Cord	20 ft.	6 ft.	4 lbs.	60 lbs.	1' 6"	3"	3"	No. 298
292 EL/Cable	20	6	4	80	1' 6"	3"	7"	No. 251, No. 250
220 EL/Cord	20	6	$2\frac{1}{2}$	40	1' 6"	3"	3"	No. 298
220 EL/Cable	20	6	$2\frac{1}{2}$	50	1' 6"	3"	7"	No. 251, No. 250
292 L/Cord	40	10	8	200	2' 0"	4"	3"	No. 298
292 L/Cable	40	10	8	300	2' 0"	4"	11"	No. 198, No. 251, No. 250
220 L/Cord	36	10	3	80	2' 0"	4"	3"	No. 298
220 L/Cable	36	10	3	120	2' 0"	4"	11"	No. 251, No. 250
292 H/Cord	Any Length	14	15	300	3' 0"	5"	5"	No. 298
292 H/Cable	" "	14	15	800	3' 0"	5"	11"	No. 198, No. 251, No. 250
220 H/Cable	" "	14	5	200	3' 0"	5"	11"	No. 251, No. 250



ADJUSTABLE STAGE PULLEY
No. 298



WALL WINCH
No. 251.



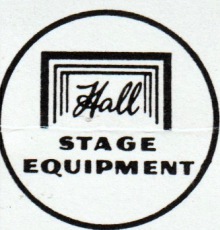
UNIVERSAL CLIP
No. 232.



CURTAIN HOOK
No. 287.

When ordering please give the following information:

Catalogue No. of Track
Length of Track (See 'U' in diagram)
Approx. drop of Curtains
Type of Suspension, D Ring, Coach Screw or Suspension Bolt
Quantity of No. 288 Brackets
Quantity of No. 287 Curtain Hooks
No. 298 Adjustable Stage Pulley
or No. 250 Floor Winch
or No. 251 Wall Winch
or No. 198 Electric Controller
(give phase and voltage)



THE SYMBOL OF WELL DESIGNED STAGE EQUIPMENT

Our Planning and
Design department is
at your service with
over fifty years'
experience in stage
engineering.

We are designers and
manufacturers of all
types of stage
equipment including:

Adjustable
Auditorium Floors
and Rostrums
Contour Curtain
Gear

Counterweighting
Curtain Tracks

Cyclorama Lifts
Orchestra Lifts
Pulley and Rigging
Equipment

Revolving Stages
Safety Curtains
Steel Tubular
Sit-ups

Stage Lifts
Variable
Prosceniums
Vertical Festoon
Curtain Gear

FURTHER
ILLUSTRATED
LITERATURE ON
REQUEST

THE HALL STAGE
EQUIPMENT LTD.,
BRIXTON,
LONDON, S.W.9,
ENGLAND

