

the

X-25

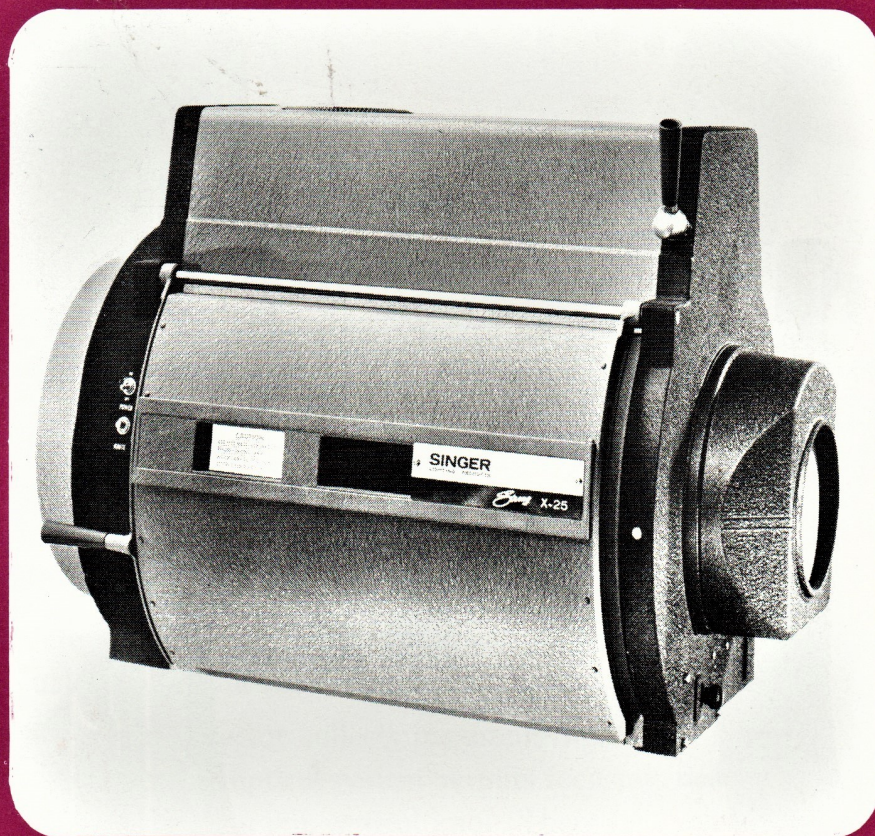
X

E

N

O

N



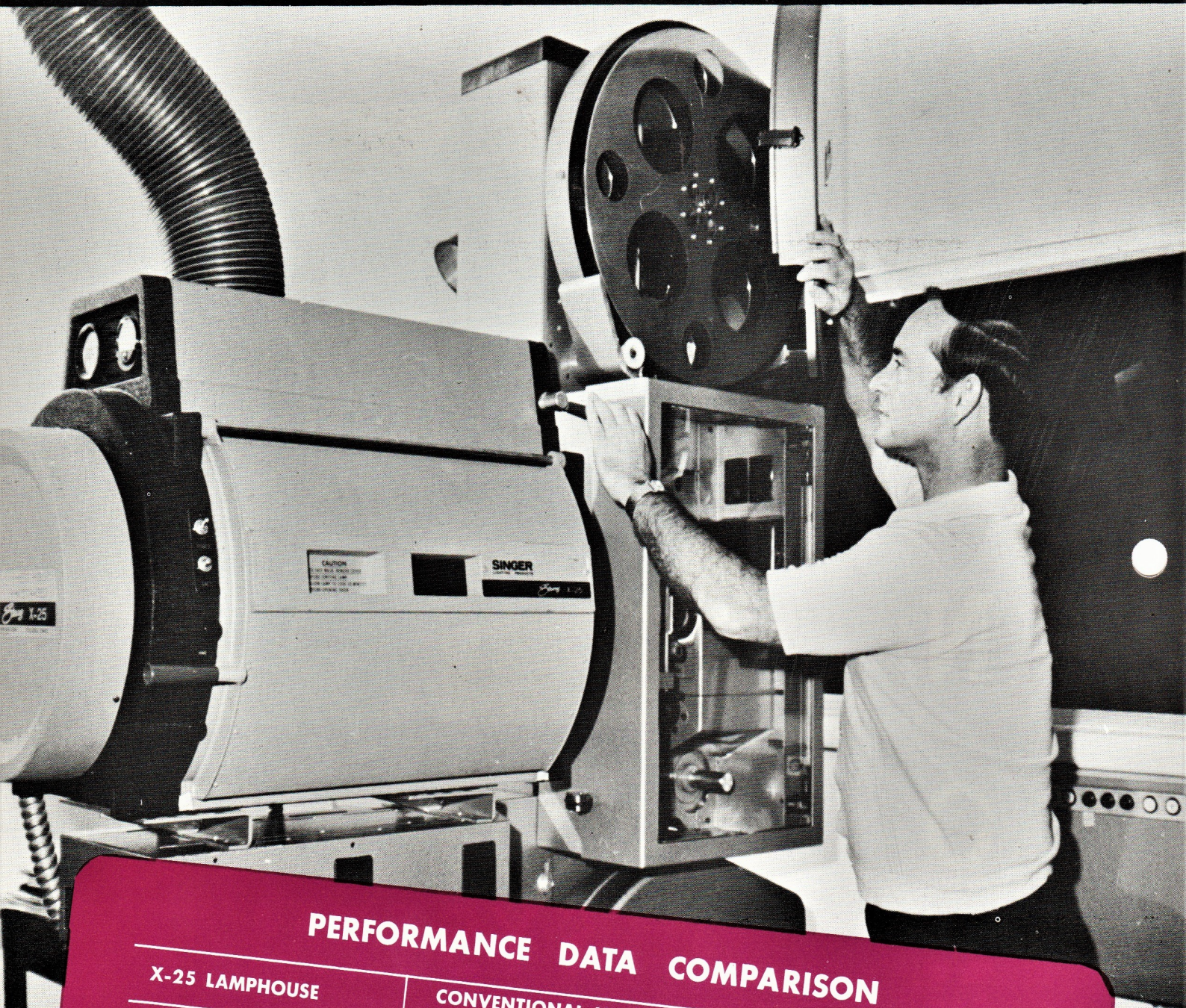
PROJECTION  
SYSTEM

by

*Strong*



# The *Strong* X-25 XENON



## PERFORMANCE DATA COMPARISON

X-25 LAMPHOUSE	CONVENTIONAL VERTICAL BULB XENON LAMPHOUSE	CARBON ARC LAMPHOUSE EQUIVALENT
"100" AMP. BULB OPERATING AT 90 AMPS. (Recommended initial current)	The X-25 will produce 27% more light than a 4,000 watt bulb operating at the recommended initial current.	11mm @ 110 amps. or 13.6mm @ 125 amps.
"80" AMP. BULB OPERATING AT 70 AMPS. (Recommended initial current)	The X-25 will produce 21% more light than a 2500 watt bulb operating at the recommended initial current.	11mm @ 90 amps. or 9mm @ 75 amps. or 8mm @ 70 amps.



# PROJECTION SYSTEM

**Designed for Theatre Screens  
in the Intermediate Range**

The bulb is horizontally mounted for maximum light intensity. This exclusive arrangement permits a simplified optical system and requires no auxiliary or 45° angle reflector, as with vertical bulb mounting.

Operating at 100 amperes, the X-25 will deliver as much light as a 11mm carbon source operating up to 110 amperes, with operation cost about the same. Compared to vertical mounted Xenon projection lamps in the 2,500 to 4,000 watt range, the X-25 will deliver 20 to 27% more screen illumination. There is direct viewing of the arc and bulb envelope.

The 80 and 100 ampere bulbs are warranted on a prorata basis. When operated at the recommended amperes, the actual bulb life should be extended considerably.

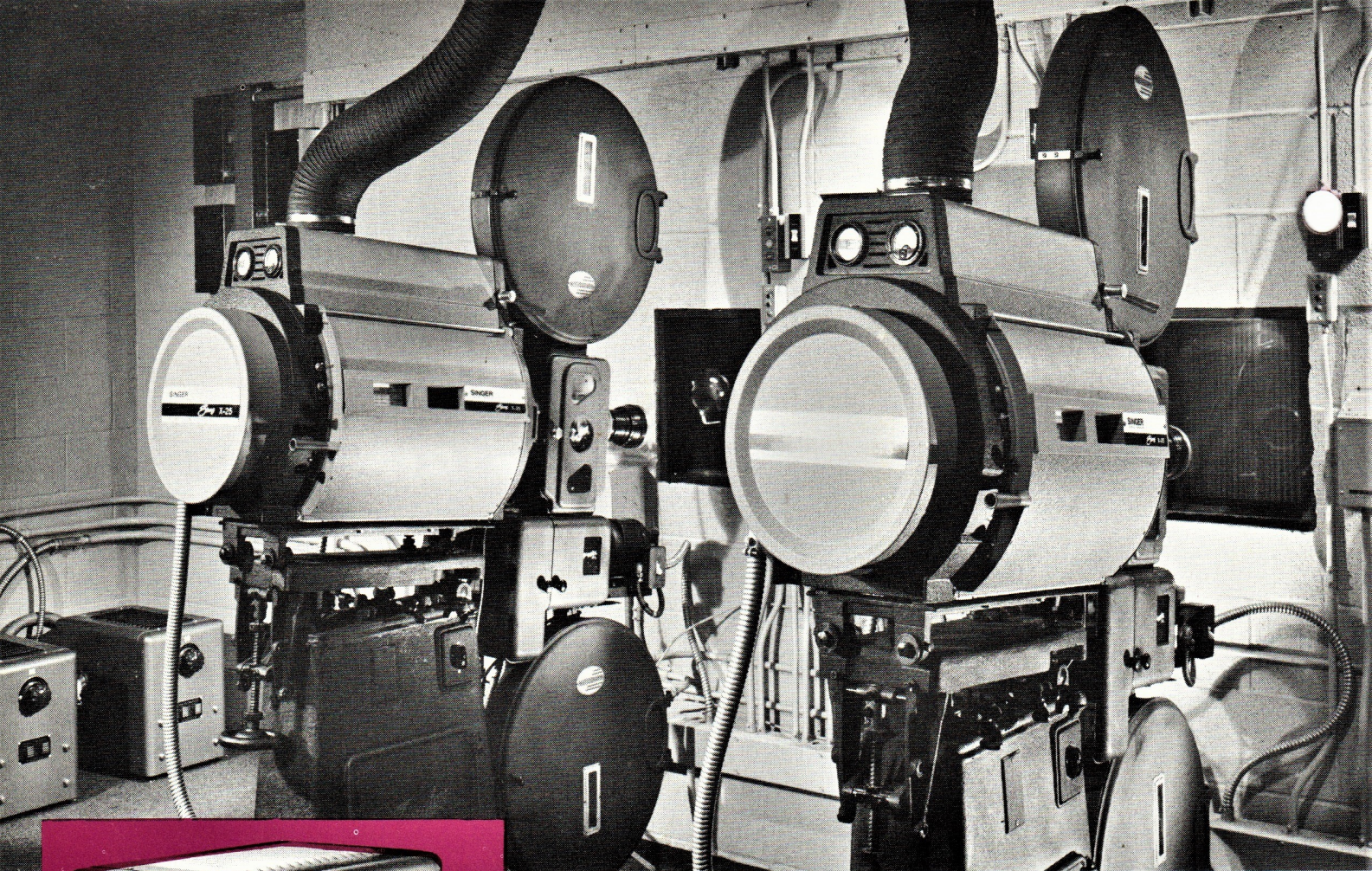
A special deep curved, 15-inch Tufcold reflector collects maximum light, and removes infra-red to reduce heat at the aperture. The optical system permits focusing, defocusing or varying light intensities by simply adjusting one control knob. There is absolutely no change in color-of-field.

A built-in automation circuit permits switching from automatic to manual in one second.

Strong Electric, the world's largest lamphouse manufacturer, is the only manufacturer to offer the exhibitor a complete line of projection lamps with automation capability in both Xenon and Carbon Arc.

**SEE YOUR MOTION PICTURE DEALER FOR A DEMONSTRATION  
OR CONTACT THE FACTORY**





## X-25 POWER SUPPLY

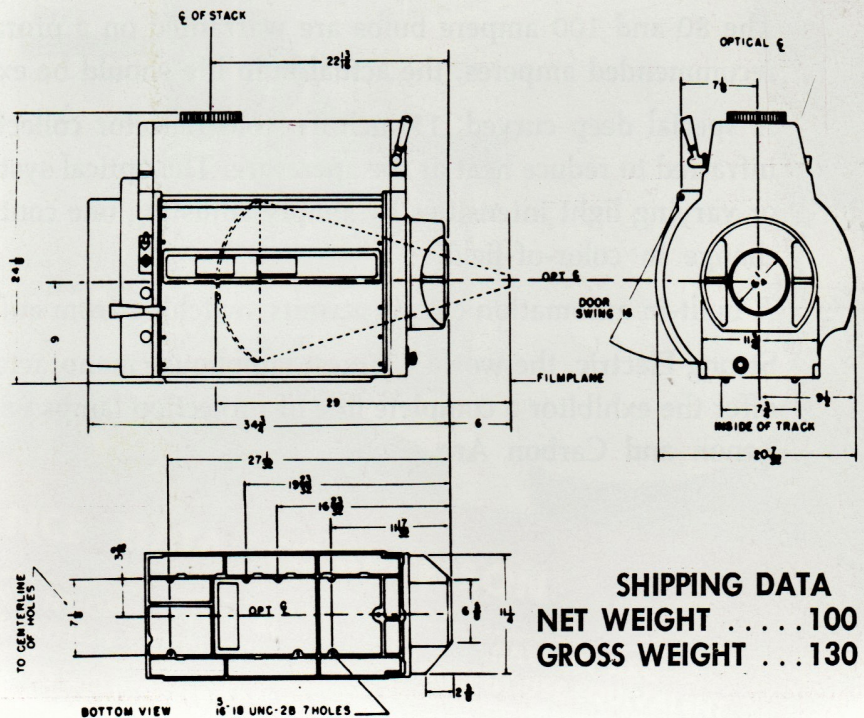
The Strong mini X-25 power supply is designed to save valuable booth space. It is specifically manufactured for matching with the X-25 lamphouse and must be used for satisfactory operation.

Features include a three phase transformer utilizing silicon diodes to provide constant DC voltage for optimum bulb operation. There is an external dial switch to make fine adjustments for over/under nominal line voltage. The X-25 power supply is designed to operate with automation systems.

### SHIPPING DATA

NET WEIGHT .....	240 lbs.
GROSS WEIGHT .....	300 lbs.
DIMENSIONS .....	HEIGHT 19"
	LENGTH 30"
	WIDTH 13 1/4"

## LAMPHOUSE SPECIFICATIONS



**SHIPPING DATA**  
**NET WEIGHT . . . . . 100 lbs.**  
**GROSS WEIGHT . . . 130 lbs.**

Form WE200—10/70

**SINCER**  
 ELECTRIC PRODUCTS

**THE *Strong* ELECTRIC CORPORATION**

Phone (419) 248-3741

87 City Park Ave. • P.O. Box 1003 • Toledo, Ohio 43601

— DEALER NAME —