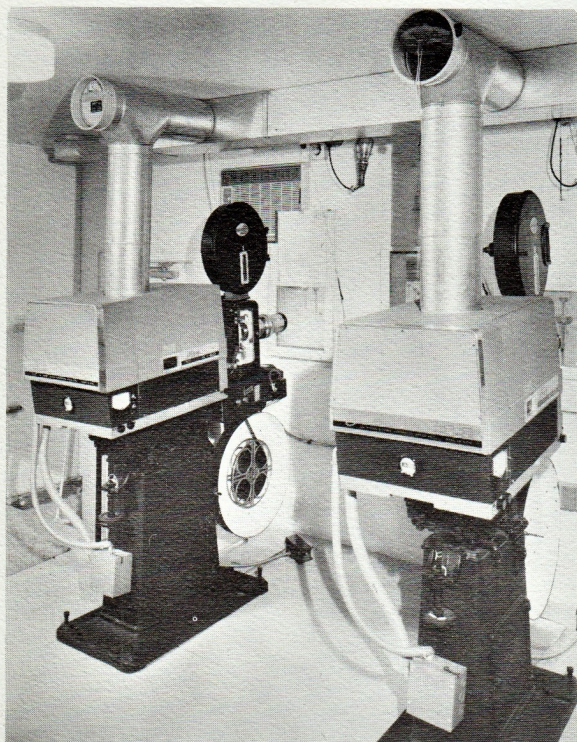


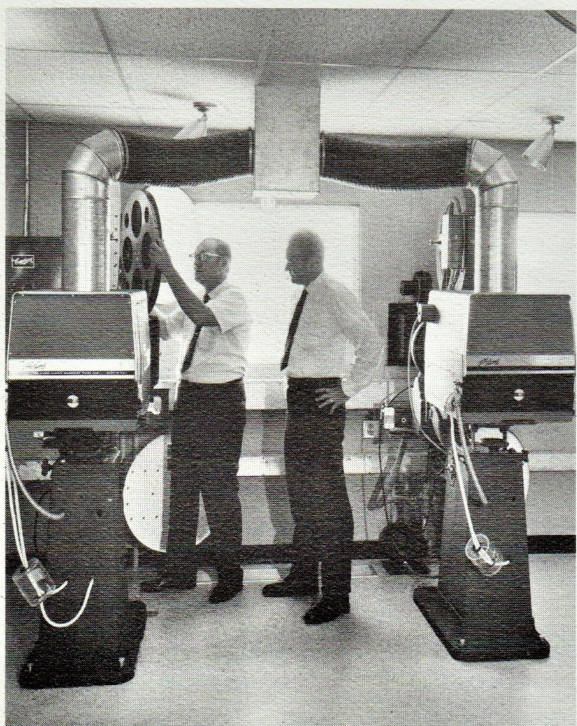
Strong
X-60

Strong

THE XENON L



ESSANESS THEATRES, CHICAGO, ILLINOIS
CICERO DRIVE-IN THEATRE



CONSOLIDATED THEATRES, CHARLOTTE, N.C.
VIKING TWIN DRIVE-IN THEATRE

The Strong X-60 Xenon Projection System, capable of delivering light intensities equal to any 13.6mm rotating carbon operated at 160 amperes, is designed for operation in Drive-Ins and Large Indoor Theatres. The xenon bulb which burns in a horizontal position represents a major innovation in projection lighting. Benefits to exhibitors over vertically mounted bulbs in xenon lamp-houses are:

- Increased Light Intensity
- Increased Light Distribution

PLUS

- Beautiful Color Reproduction
- Constant Light Source
- Simplicity of Operation

These advantages in quality projection represent a major breakthrough in motion picture presentations. The X-60 is the culmination of over a decade of xenon experience by the Strong Electric Corporation. And Strong Electric Engineers in planning for the future have designed the X-60 Lamphouse to accommodate xenon bulbs for even higher current ratings. The X-60 must be powered only with a Strong X-60 Type 77008 Power Supply described on page four.

AUTOMATION

The X-60 complements automation (programmers) systems now being installed in theatres. A xenon light source provides unlimited operational time, a constant light source and eliminates the need to occasionally adjust controls permitting a desirable systems approach to projection booth automation. When coupled with the use of large capacity reels the theatre projectionist is freed from performing repetitive tasks in the booth. The X-60 is manufactured with an automatic-manual circuit for instant switching to either mode of operation and is compatible with all known major automation systems.

LAMPHOUSE OF THE SEVENTIES

X-60 XENON ARC LAMP

LAMPHOUSE TYPE 81000

The X-60 Lamphouse design combines modern styling with proven horizontal positioning of the xenon bulb. This advanced design, pioneered by Strong Electric, permits collection and transmission of far more light to the film aperture than systems using vertical bulbs with auxiliary collection systems or systems using a multiplicity of optical components.

Installation is simplified and after initial controls are set, the lamphouse requires very little attention other than an occasional wiping of the reflector. Arc stabilization is accomplished by the use of a permanent bar magnet located directly under the arc stream. The bulb seals are air cooled by an auxiliary blower mounted in the lamphouse and activated when the power supply is turned on. The nose casting on the front of the lamphouse has a large 6½" opening that permits full coverage of the 70mm aperture without shadowing at the corners.

XENON BULB

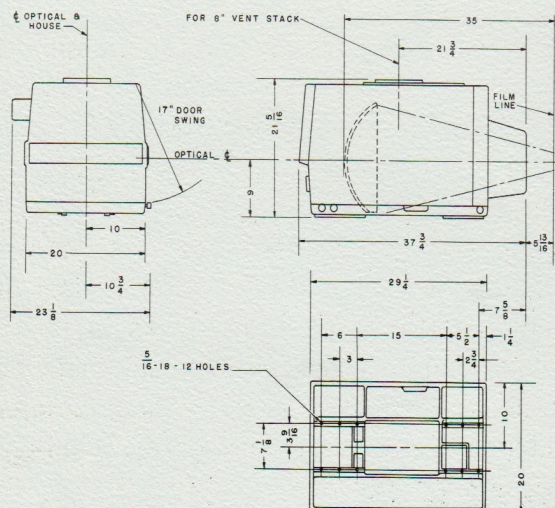
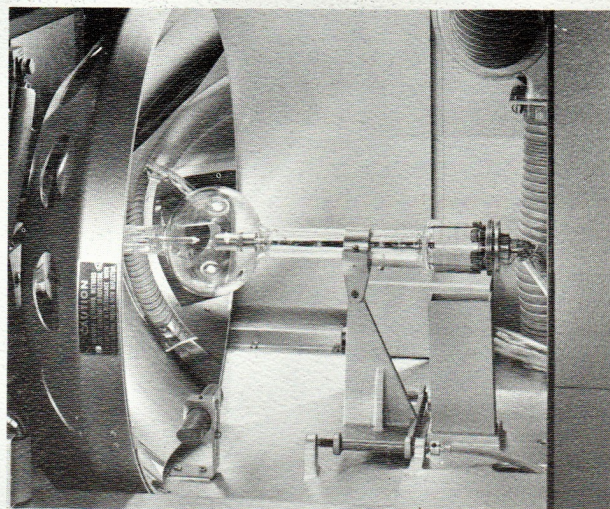
The xenon bulb emits a light closely resembling natural daylight with a color temperature of 5800° Kelvin. Other characteristics include high arc brightness, instant start, maintenance free operation and low power consumption. The xenon bulb when operated in accordance with the manufacturer's instructions is warranted on a prorata basis for 1000 hours.

REFLECTOR

The heart of the X-60 optical system is an 18 inch diameter deep ellipsoidal Strong Reflector Spec. No. 267. This reflector was developed by Strong Optical Engineers specifically for the X-60 system. It has an optical speed of F1.7 and a pickup angle of 180 degrees of light with a recommended working distance from the projector film line of 34½ to 35½ inches. Only one control knob is used for the purpose of focusing, defocusing and varying light intensities . . . with absolutely no change in color of field on the screen. The X-60 reflector is a Strong Tufcold first surface cold type and will give years of service.

IGNITER

The igniter, designed especially for Strong Electric, is mounted inside the rear of the lamphouse. The igniter has a built-in pulse timing circuit to provide a one-second ignition cycle and approximately three-second delay before the next pulse is introduced. This feature is especially useful when the X-60 lamp is operated with automation systems.



DATA

| | |
|-----------------------|---------------|
| D.C. ARC CURRENT..... | 110-150 |
| D.C. ARC VOLTAGE..... | 22-41 |
| LAMP BLOWER..... | 220 VOLT A.C. |

CONTROLS

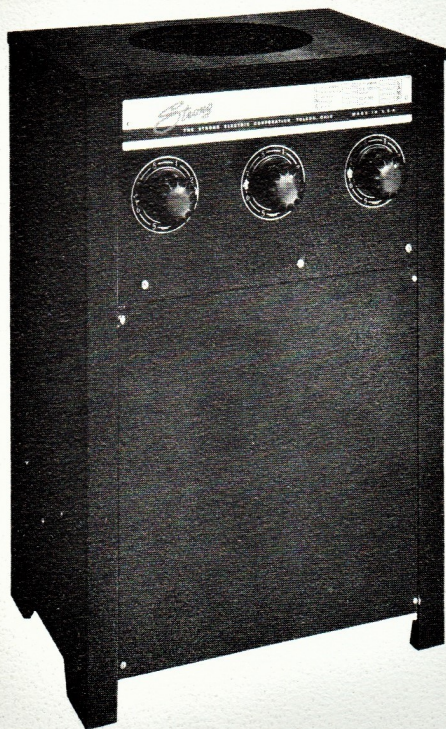
IGNITE BUTTON
POWER SWITCH
AMMETER
RUNNING TIME METER
HORIZONTAL BULB ADJUSTMENT
VERTICAL BULB ADJUSTMENT
SAFETY INTERLOCK
AUTOMATIC/MANUAL MODE SWITCH
FOCUS CONTROL

SHIPPING DATA, LAMPHOUSE

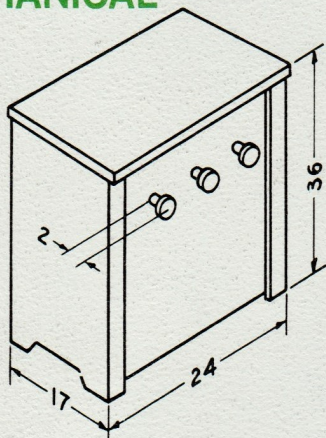
| | |
|------------------------|-----------------|
| NET WEIGHT..... | 125 lbs. |
| SHIPPING WEIGHT..... | 260 lbs. |
| CRATED DIMENSIONS..... | 45" x 32" x 32" |

Strong

**TYPE 77008
X-60 POWER SUPPLY
FOR X-60 XENON
PROJECTION LAMPHOUSE**



MECHANICAL



SHIPPING DATA

NET WEIGHT 385 lbs.
GROSS WEIGHT 415 lbs.
CRATED DIMENSIONS 27" x 22" x 39"

The Strong X-60, Type 77008, D.C. Power Supply is a three phase transformer type, with full wave bridge type rectifier utilizing silicon diodes. The power supply is specifically manufactured for matching with the X-60 Lamphouse and must be used for satisfactory operation. A power supply is required for each lamphouse.

A rugged heavy duty High Reactance type transformer constructed of class "H" (glass) insulation supplies current to the silicon rectifying element. External tap changing dial switches are provided to make fine adjustments for over/under nominal line voltage, even while the projection lamp is operating. Four coarse tap terminals inside the power supply are for initial installation and major voltage changes.

Designed for continuous duty, the power supply has a built-in heavy duty fan for cooling the rectifier stack and transformers. This forced draft system cools the power supply to near room temperature. A line control relay is provided for remote control of input power.

The X-60 Power Supply is designed to operate with programming (automation) systems.

ELECTRICAL INPUT

A.C. VOLTS.....220
PHASE..... 3
HERTZ..... 60
AMPERE SERVICE..... 60

OUTPUT

D.C. VOLTS.....22-41
D.C. AMPERES.....110-170
DUTY CYCLE.....Continuous

DISTRIBUTED BY:

SINGER
LIGHTING PRODUCTS

The Strong Electric Corporation
87 City Park Avenue
P. O. Box 1003
Toledo, Ohio 43601
(419) 248-3741