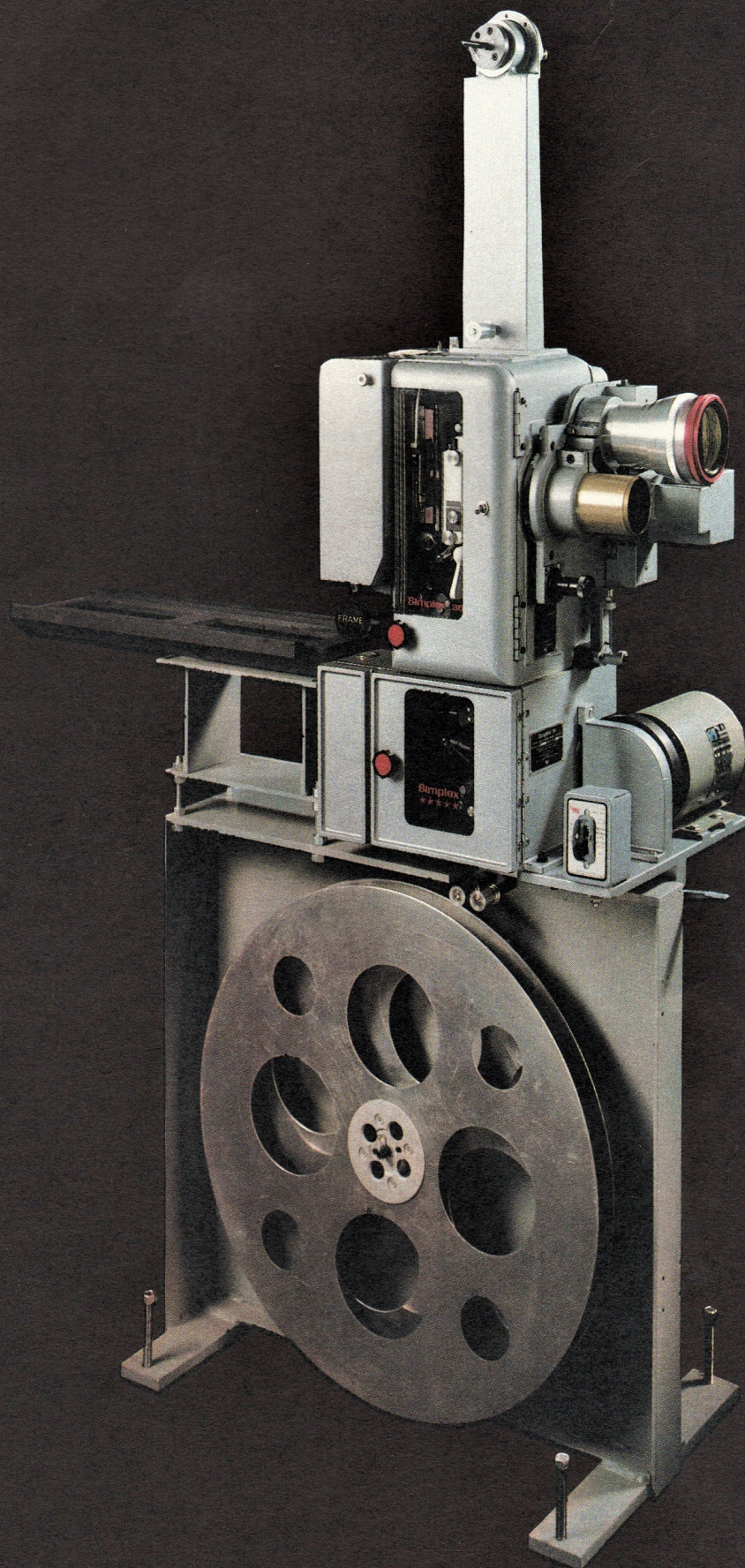
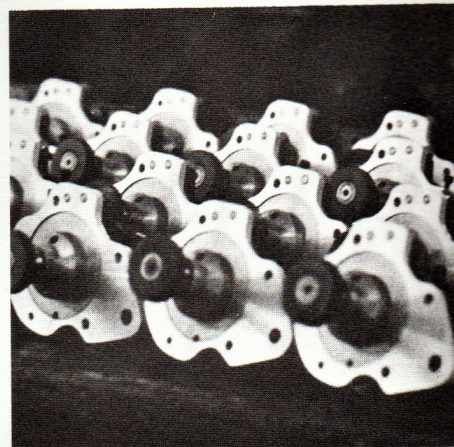


S I M P L E X[®]

The Ultimate in Projection Systems



Simplex®

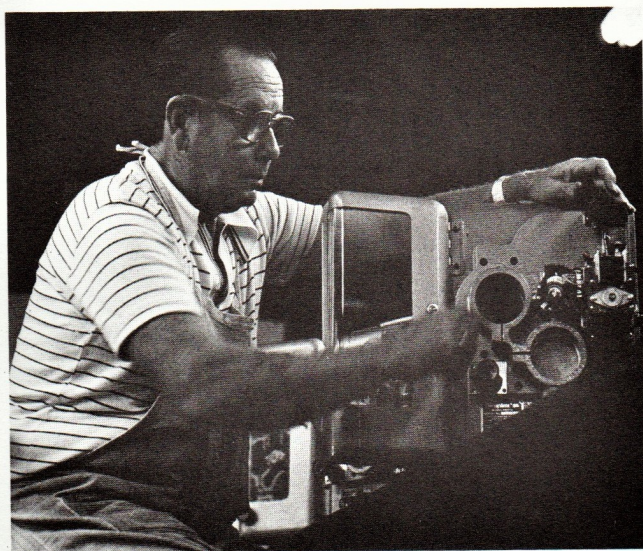


Simplex®... precision engineered
with parts machined to critical
tolerances. . . .



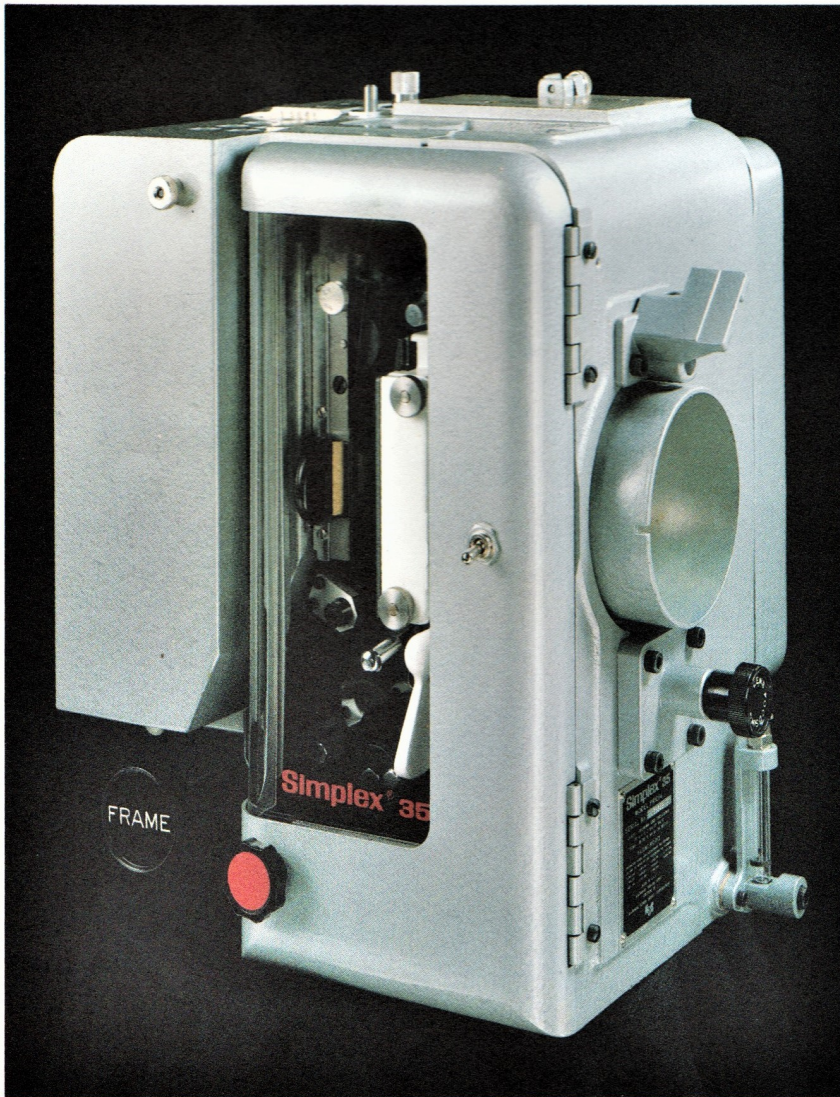
and assembled with T.L.C.

Simplex is built in the finest
tradition of American
craftsmanship, to provide ease of
maintenance, and a lifetime of
reliable service.



Simplex® XL 35mm Projector

Model PR-1014



The SIMPLEX® projector... carefully and meticulously hand-assembled with the jewel-like precision of a fine watch. Each part is manufactured to critical tolerances, set precisely in a main frame of heat treated sand aluminum alloy... strongest, yet light in weight... with separate gear and film compartments so that no oil ever reaches the film. The contoured film gate, a unique SIMPLEX innovation, prevents the film from popping in and out of focus no matter how much heat the light generates... and operates on a special 24-tooth sprocket that runs at a slower, more even speed to eliminate potential film breaks. Its unit method of design simplifies replacement and maintenance.

"The workhorse of the Industry"

Features and Specifications

SIMPLEX® 35mm PROJECTOR

FEATURES

- Universal conical shutter for maximum light transmission... adjustable for indoor or drive-in installations.
- Contoured gate reduces film buckling... holds film rigid without air or gadgets... improves stability of focus. Curved film trap runners hardened and precision ground, longer life... greater heat dissipation.
- Optional studio or straight gate.
- Frame lock indicator eliminates framing guesswork.
- Separate film and gear compartments... no oil ever reaches film.
- Gear train has oil mist lubrication... indoor / drive-in lubrication regardless of projection angle... gauge indicates oil level at a glance.
- Roomy film compartment has more finger room... makes threading easier.
- Full-vision observation window.
- Convertible to air or water cooled operation.
- Automatic fire shutter can be reset while projector operates.
- Slower speed, smoother film control with 24-tooth sprockets.
- Optional reversing mode capabilities. Dual picture and track mechanisms also available. Special order.
- VKF Sprockets available as option.

GENERAL SPECIFICATIONS

- Enclosed frame construction with hinged film compartment door and removable gear compartment door... includes framing lamp to illuminate framing aperture and threading lamp with switch on door.
- Unit construction of lower and upper feed sprocket assemblies... main vertical drive... fire shutter and governor... framing shaft assemblies... intermittent movement.
- Film trap and gate curved with convex curvature in vertical plane towards aperture. Slip-in aperture plate... removable for cleaning. Provisions for either air or water cooling.
- Intermittent movement mounted on main frame as a unit, removable from gear side... star and cam hardened and ground... integral pump for positive lubrication.

- Film tracks and lateral guides hardened and ground steel... pressure pads support film at least two frames above and below aperture... self-equalizing and adjustable when mechanism in operation.
- Shutter is single conical type located not more than 1 1/8" from picture aperture... adjustable from 47 degrees to 92 degrees... efficiency exceeds 52%.
- Fire shutter is automatic resetting, free-falling type... safety trip located above picture aperture.
- Lens mount 4" diameter with adapters for all projection lenses having standard SMPTE dimensions.
- Spray-O-Matic lubrication system with gear driven oil pump.
- Weight of projector head: 67 lbs.
- Shipping Weight: 89 lbs.

5-STAR 35MM SOUNDHEAD

FEATURES

- Solar Cell pick-up.
- Belt-driven soundhead... for quieter, smoother operation... requires no oiling.
- Light, spacious interior... for easier, roomier threading.
- Bracket-mounted exciter lamp... for split-second replacement.
- Direct film scanning via sound optic tube... eliminates mirrors or reflectors.
- Pre-wired with terminal strip connections... for simplified installation.

GENERAL SPECIFICATIONS

Soundhead contains:

Belt drive, pressure rollers, sound drum with solid flywheel, exciter lamp assembly, optics, solar cell, damping mechanism, 1/4 HP motor.

Synchronous Motor:

Optional 1800 RPM 1/4 HP, 115 volt, 60 cycle, single phase.

Dimensions:

Soundhead unit, 9 1/2" H x 12" W x 11 3/4" D, plus motor mounting, 11 1/2" H x 17 1/2" W.

Weight:

Soundhead unit... 70 lbs., including motor.

Simplex® 5-Star 35mm Soundhead

Capable of the highest fidelity sound reproduction, the SIMPLEX 5-Star 35mm Soundhead has a see-through window which permits the operator to check any film damage or breakage occurring within the soundhead. The new 5-Star mechanism includes a re-designed flywheel mounting concept, guaranteeing consistent operation.

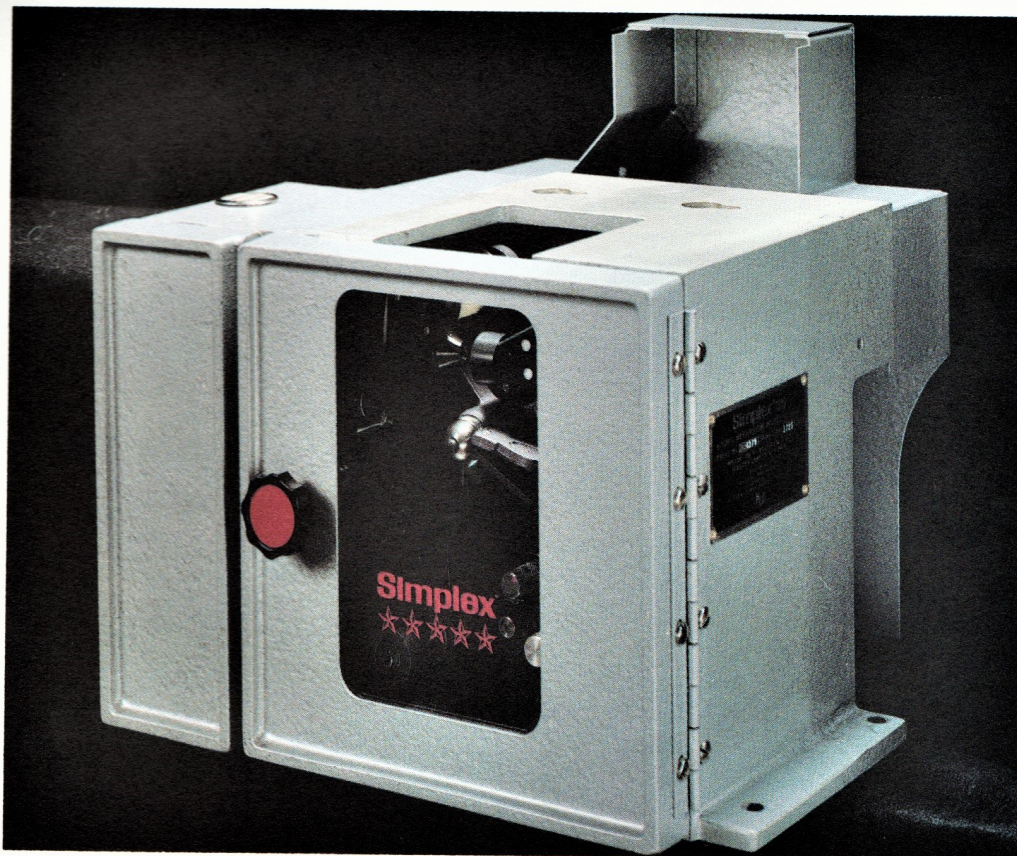
The soundhead mechanism is contained in an assembly of aluminum castings approximately 12 inches long by $\frac{3}{4}$ inches deep by 9½ inches high. A ¼ HP electric motor is mounted outside these dimensions.

The operating side of the soundhead is covered by 2 doors which provide access to the film and exciter lamp compartments. The drive mechanism gear belts and pulley are readily accessible.

The principal functioning elements of the soundhead are motor, drive mechanism, pressure roller, sound drum, exciter lamp assembly, optics, solar cell and sound damping mechanism.

The motor drives through an 18 tooth pulley and a gear belt to the film sprocket which has an 89 tooth gear belt pulley, which in turn reduces the RPM speed of the motor to the film sprocket speed (24 frames per second). A second gear belt synchronizes the soundhead speed with the projector.

The film is delivered continuously to the soundhead by the lower sprocket of the projector. Between the sound drum and the film sprocket the film is under approximately 1½ ounces of tension that is maintained by a silicone fluid. The unit is designed to absorb variations in film drive at start up, minimizing any wow content. Flutter is kept minimal by the improved flywheel.



The SIMPLEX 5-Star Soundhead is compatible with other projection systems.

Our Soundhead can be ordered with a synchronized 1800 RPM ¼ horsepower, 115 volt 60 cycle, single phase electrical drive motor, for simple and less expensive means of interlocking projector systems in multi-plex theatres.

Simplex® Auto-Turret and Aperture Changer

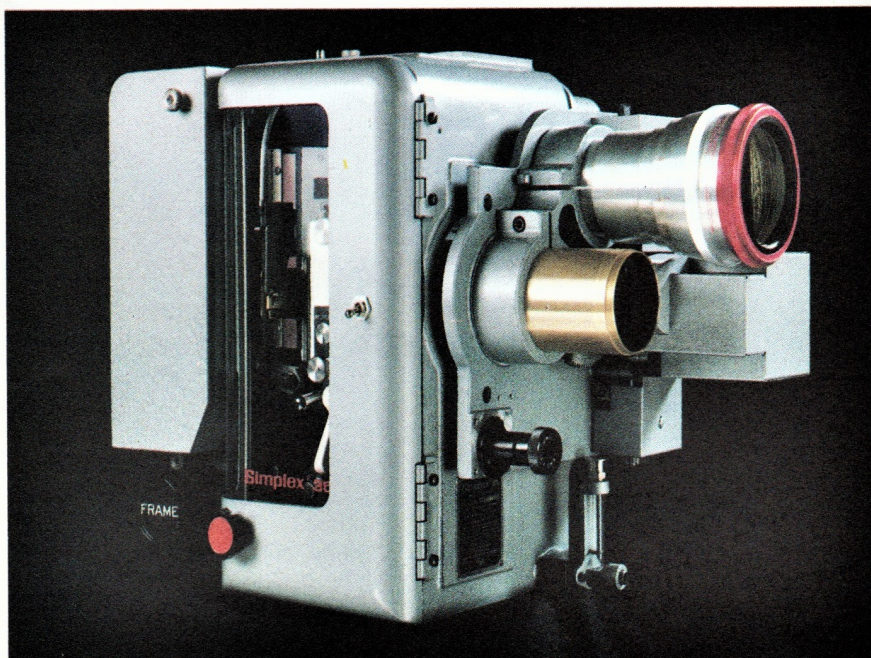
The automated lens and aperture changing system.

The Simplex Auto-Turret and Aperture Changer enables theatres equipped with Simplex 35 projectors to easily automate lens and aperture changing without any modification to the projectors. Provides split-second change when used with automation systems... or can be rapidly changed manually with push-button control. Installation can be completed in approximately one hour on in-service Simplex projectors.

Like all Simplex products, the Auto-Turret and Aperture Changer is manufactured to the highest standards of quality for reliable service. Precision engineered to answer the practical needs of today's projection room.

GENERAL SPECIFICATIONS

- Aperture: dual aperture supplied for 1.85:1 standard optical and 2.35:1 anamorphic... other sizes available upon request.
- Lenses: system requires one back-up lens; one anamorphic lens; one Kollmorgen Magnacom.
- Cycle: lens and aperture change is accomplished in less than 5 seconds.
- Power: 117V, 60 cycles AC... approximately 300W current drain during lens cycling.
- Shipping weight: approximately 15 lbs.



FEATURES

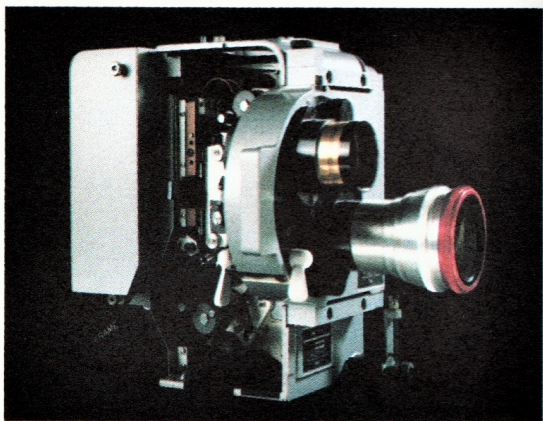
- Designed for mounting on the Simplex 35 projector without any modifications to the mechanism.
- Reliable motor-driven turret.
- Each lens position has positive lock to insure exact indexing repeatability of focus and registration.
- May be fully automated... or can be manually operated by pushbutton control.
- Installation can be completed on an in-service projector in approximately one hour.

Simplex[®] XL Projector *Model PR1050*

with manual lens turret and aperture changer.

FEATURES For Projector

- Universal conical shutter for maximum light transmission.
- Frame lock indicator eliminates guess work.
- Gear train oil mist lubrication.
- Separate film and gear compartment... no oil ever reaches film. Gauge indicates oil level at a glance.
- Roomy film compartment has more finger room... makes threading easier.
- Slower speed, smoother film control with 24 tooth sprockets.
- Automatic fire shutter can be reset while projector operates.



FEATURES For Turret

- Aperture can be supplied to customer's specifications or blank to permit on-site modification for custom sizing.
- Lens and aperture change can be accomplished in approximately 3 seconds.
- Intermittent movement mounted on main frame as a unit, removable from gear side... star and cam hardened and ground... integral pump for positive lubrication.
- Shipping weight: approx. 98 lbs.

GENERAL SPECIFICATIONS

- Eliminates refocusing.
- Rugged assembly and registration stops to insure accurate picture location on screen.
- Each lens can be adjusted separately in two directions to permit exact picture location on screen.
- Turret will accept any standard lens with 2.78 barrel diameter.
- Aperture change is quick with positive location in either position.
- No magna com required.

The "Slim-Jim Pedestal" from SIMPLEX occupies a minimum of floorspace. It can be used in a projection room as small as six (6) feet in depth.

- Operating side of pedestal accommodates up to twenty-six inch (26") take-up reel; no magazine required: reliable take-up unit with $\frac{5}{16}$ " or $\frac{1}{2}$ " adapters.
- Lamphouse alignment adjustments provided for all directions.
- Accommodates most xenon lamphouses.
- Readily adjustable upward and downward tilt.
- Pedestal also available with optional built-in dual film attachment and interlock capability for screening room use.
- Sturdy steel plate construction—open frame for maximum accessibility.
- Additional rollers available for use with platters.

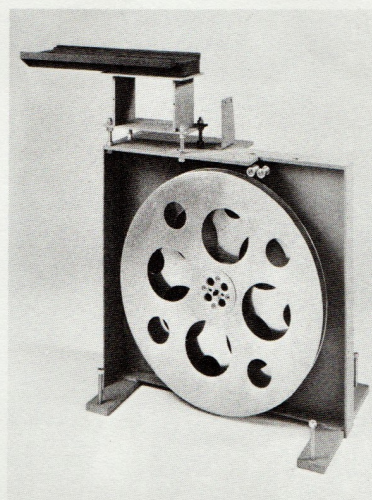
Overall dimensions

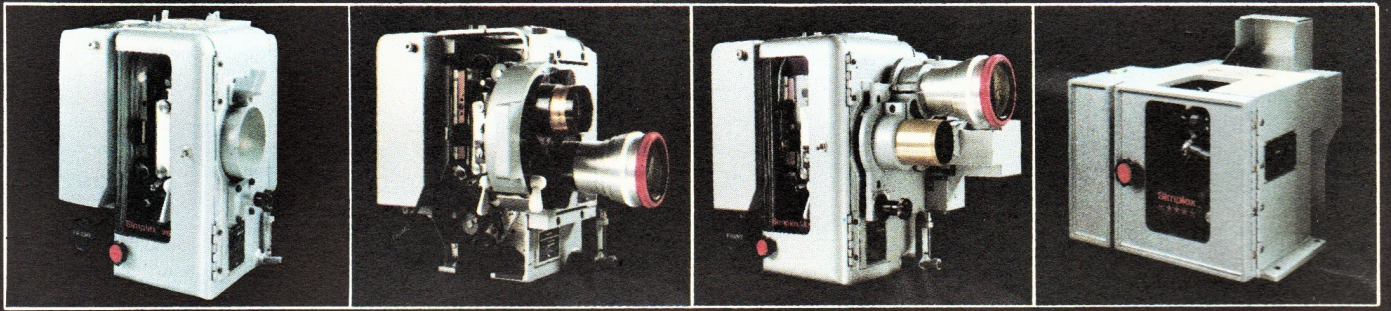
29" H x 20" W x 28" D

Weight: 175 lbs

Will accommodate the lamphouse of your choice

* Accommodates most xenon lamphouses.





for those who want to project a better image.

Simplex[®] Projector Company A Division of
1600 Broadway, New York, N.Y. 10019 212-245-6900 National Screen Service Corporation