

SHIP
ELECTRIC ARC LAMP
CARBONS
for
PROCESS ENGRAVING ETC.
&
PLAN REPRODUCTION.

PRICE LIST
MAY 1948

Subject to withdrawal without NOTICE.

Issued by
CHARLES H. CHAMPION & CO. LTD.,
NATIONAL HOUSE,
60/66, WARDOUR STREET, LONDON, W.1.

Phone:
GERrard 9376-8

Telegrams:
KARBONIMPO,
PHONE: LONDON

PRICE LIST



SOLID ENCLOSED

for enclosed lamps

NETT PRICES per 100 PIECES*

DIAMETER mm.	LENGTH in.	LIST "A" WHERE ORDER IS for 100 pieces or more	LIST "B" WHERE ORDER IS for 50 to 99 pieces	LIST "C" WHERE ORDER IS for 1 to 49 pieces
5	4	13/-	14/6	15/9
6	12	39/-	43/-	47/-
7	11	47/-	51/9	56/6
8	12	52/-	57/3	62/6
9	12	58/-	64/-	69/9
11	12	69/-	76/-	83/-
12	12	83/-	91/6	99/9
13	12	87/-	95/9	104/6
13	16	116/-	127/9	139/3
13	18	130/-	143/-	156/-
14	12	97/-	106/9	116/6
17	12	118/-	130/-	141/9

***SEE CONDITIONS OF SALE**

SHIP

BRITISH MADE

CARBONS



WHITE FLAME

for open lamps

NETT PRICES per 100 PIECES*

DIAMETER mm.	LENGTH in.	LIST "A" WHERE ORDER IS for 100 pieces or more	LIST "B" WHERE ORDER IS for 50 to 99 pieces	LIST "C" WHERE ORDER IS for 1 to 49 pieces
8	12	47/-	51/9	56/6
9	12	60/-	66/-	72/-
10	12	73/-	80/6	87/9
12	10	82/-	90/3	98/6
12	12	98/-	108/-	117/9
13	12	110/-	121/-	132/-
14	10	105/-	115/6	126/-
14	12	126/-	138/9	151/3
14	16	167/-	183/9	200/6
15	12	142/-	156/3	170/6
15	16	189/-	208/-	227/-
16	12	159/-	175/-	191/-
16	16	212/-	233/3	254/6
18	12	205/-	225/6	246/-
20	12	237/-	260/9	284/6
22	12	286/-	314/9	343/3
25	12	376/-	413/9	451/3

*SEE CONDITIONS OF SALE

PRICE LIST



CORED ENCLOSED

for enclosed lamps

NETT PRICES per 100 PIECES*

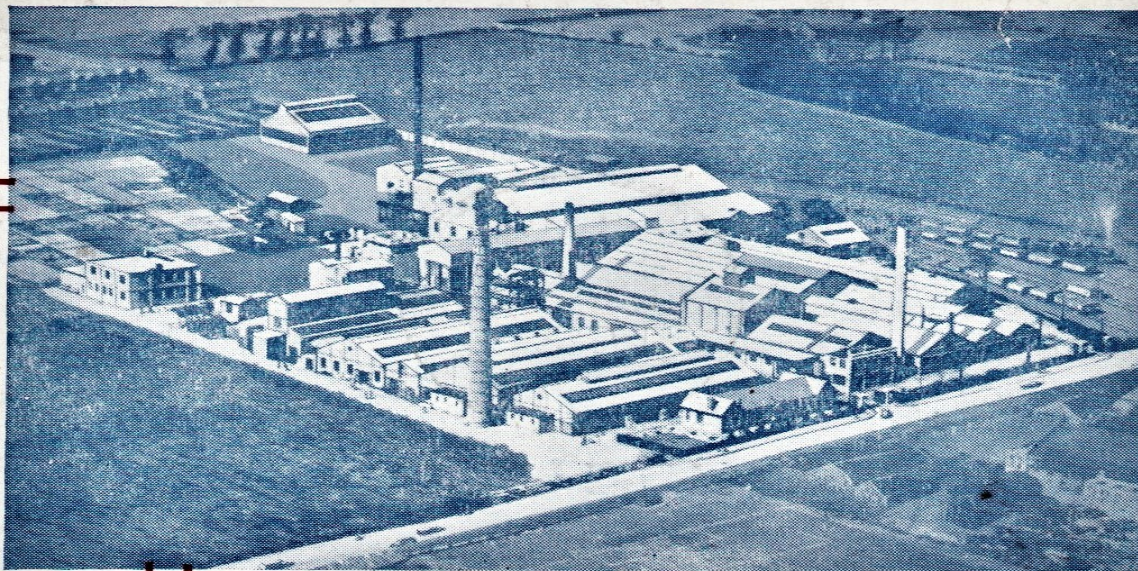
DIAMETER mm.	LENGTH in.	LIST "A" WHERE ORDER IS for 100 pieces or more	LIST "B" WHERE ORDER IS for 50 to 99 pieces	LIST "C" WHERE ORDER IS for 1 to 49 pieces
5	4	13/-	14/6	15/9
6	12	39/-	43/-	47/-
7	11	47/-	51/9	56/6
8	12	52/-	57/3	62/6
9	12	58/-	64/-	69/9
11	12	69/-	76/-	83/-
12	12	83/-	91/6	99/9
13	12	87/-	95/9	104/6
13	16	116/-	127/9	139/3
13	18	130/-	143/-	156/-
14	12	97/-	106/9	116/6
17	12	118/-	130/-	141/9

***SEE CONDITIONS OF SALE**

CONDITIONS OF SALE

The prices of Ship Carbons to the consumer have been compiled to ensure minimum prices and a clearly defined policy of Distribution and Sale.

- 1 The prices quoted in Lists "A" and "B" herein, will only be applied when the appropriate quantities of one Type and Size, are ordered to be delivered at one time to one address.
- 2 Delivery of Carbons at List "A" prices will be Packing and Carriage free by Goods Train or Suppliers' Van. The cost of Carriage in respect of Lists "B" and "C" prices may be charged to the consumer. In all cases, additional costs for other transport (e.g. Passenger Train or Postage) and for any special Packing thereby involved, will be chargeable to the consumer.
- 3 All prices shown herein (except where referred to in paragraph 4 below) are strictly nett and are not subject to further Cash discount, Monthly settlement, or any type or form of Rebate whatsoever.
- 4 **Special Note:—**
For orders of 250 pieces (and multiples thereof) of one Type and Size of carbon for delivery at one time to one address, a discount of 5% is allowed off LIST "A".



*Supplies of Ship Carbons
are obtainable from all the
leading Supply Houses*

Supplied by

PROCESS SUPPLIES

19 MOUNT PLEASANT
LONDON, W.C.1

Telephone : TERminus 2179