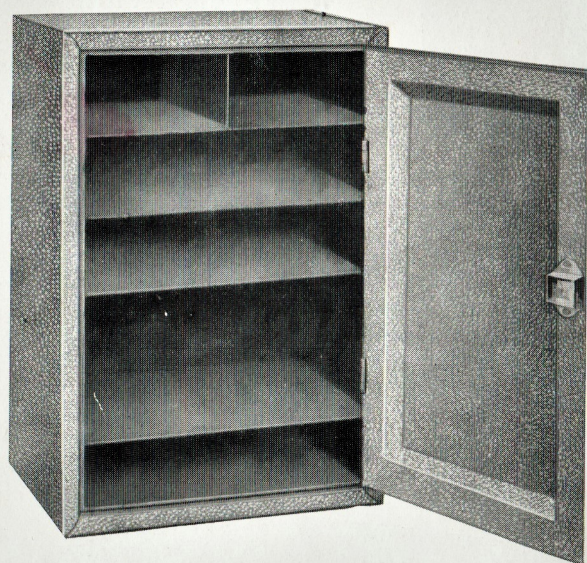




TOOLS AND SPARES CABINET



The Cabinet (as illustrated here) is specially designed to hold the essential tools and expensive spares of the Projection Room under lock and key. It is strongly constructed of steel, all joints and seams being welded. The panelled door is fitted with a strong lock and is supplied with two keys. The exterior is attractively finished in grey crystalline enamel; the interior in matt grey. Overall size: 24" high \times 16" wide \times 12" deep.

£5 15s. 0d.

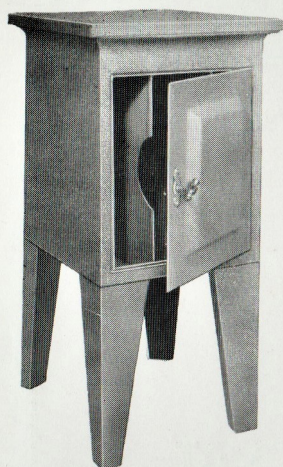
(Plus Purchase Tax)

This, and other items illustrated in this leaflet, can be supplied in other colours at a small extra cost.



PROJECTION ROOM ACCESSORIES

(RECORD CABINET, NON-SYNC RECORD AND
SPARES CABINET, WASTE FILM BIN, CARBON
TRAY, TOOLS AND SPARES CABINET)



RECORD CABINET

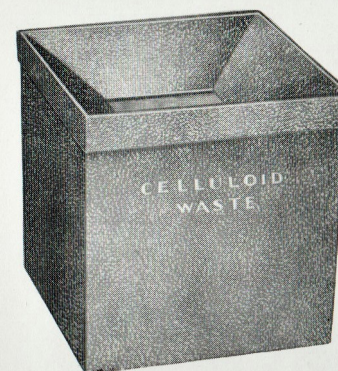
The Cabinet illustrated is specially designed to hold the records for the Non-Sync apparatus and accommodates approximately 50 records. It is of all-metal construction and is partitioned off into three compartments, thus enabling records up to 15" diameter to be handled with comparative ease. The exterior is attractively finished in grey crystalline enamel. The dimensions of the top are 16" x 14" and the height from the floor is 30".

£6 0s. 0d.

(Plus Purchase Tax)



CELLULOID WASTE BIN

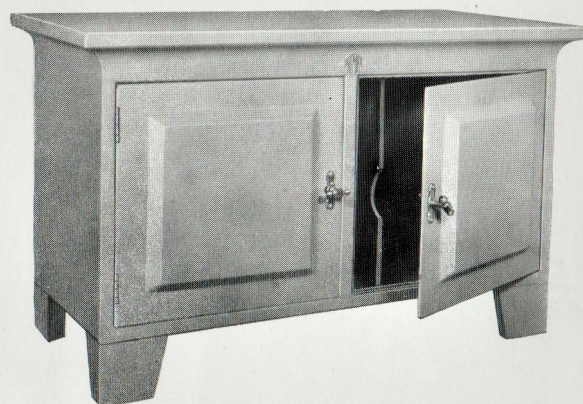


It is a Council Regulation that a receptacle must be provided in a Rewind Room into which all pieces of scrap film can be put. The bin illustrated here meets this Regulation in every respect. The top is fitted with a spring-controlled flap which automatically seals the bin; for emptying purposes the whole top lifts off. It measures 11" x 11" x 12" deep. Finished in grey crystalline enamel, this bin is a necessity in every Rewind Room.

~~£1 12s 6d~~

£2. 0. 0.

NON-SYNC TABLE AND COMBINED RECORD AND SPARES CABINET

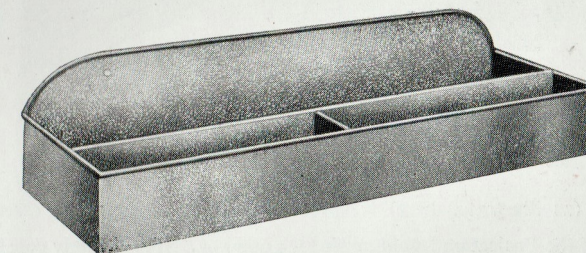


As the illustration shows this is an attractively designed table to accommodate a twin Non-Sync apparatus. Strongly constructed in steel, the cabinet is partitioned. On the one side there is accommodation for approximately 50 records, on the other there are two shelves for tools and spares. The whole is enclosed by two panelled doors. The dimensions of the top are 34" x 18" and the height from the floor is 22". The exterior is finished in grey crystalline enamel.

£10 0s. 0d.

(Plus Purchase Tax)

CARBON TRAY



This tray is a "must" in any up-to-date Projection Room, saving immeasurable time when recarboning. It can be fixed to the wall in any convenient position. It consists of a tray partitioned off into three compartments, one to take carbons up to 24" in length, the other two to take carbons up to 12" in length. It is strongly constructed and is attractively finished in grey crystalline enamel.

~~18s 6d~~

24/=