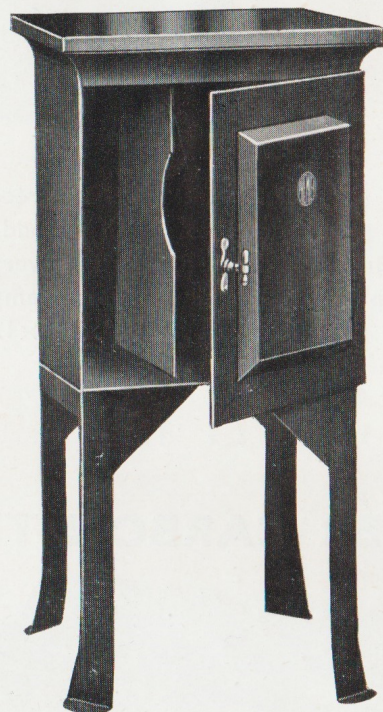


PREMIER RECORD CABINET



The Cabinet illustrated is specially designed to hold the records for the Non-sync. apparatus. It is constructed of stout gauge sheet steel on an angle iron frame and legs and is partitioned off into compartments to enable the records to be handled with comparative ease.

It is capable of accommodating approximately 50 Records.

Finished in crystalline black enamel.

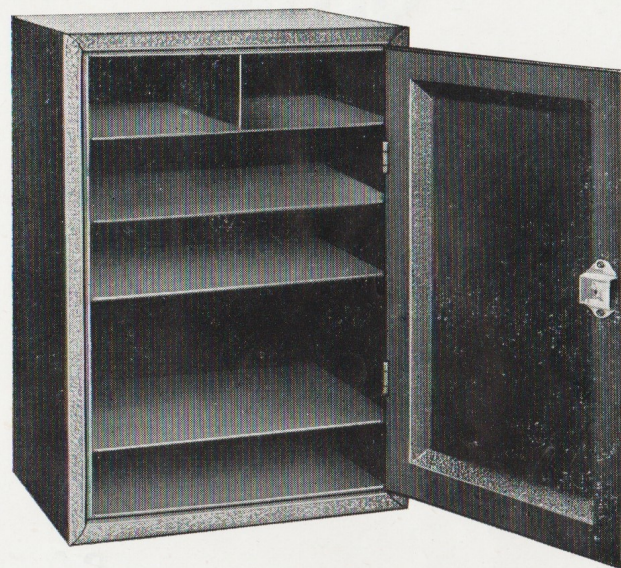
PRICE £5 5 0

66 2/3% P.T. a cont. price



PROJECTION ROOM ACCESSORIES

PREMIER TOOLS & SPARES CABINET



The Cabinet illustrated is specially designed to hold the tools and spares of all descriptions which are a necessity to any well equipped Projection Room.

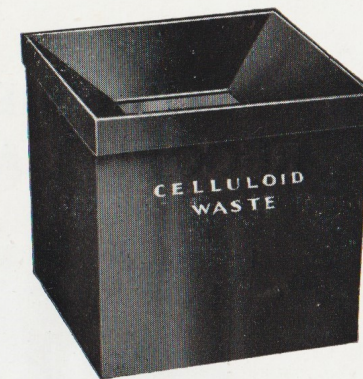
It is substantially constructed of stout gauge sheet steel, all joints and partitions are welded and the panelled door is fitted with a good quality lever lock with 2 keys.

The exterior is finished in crystalline black enamel, the interior in matt black.

Overall size of Cabinet, 24" high, 16" wide, 12" deep.

PRICE £5 0 0

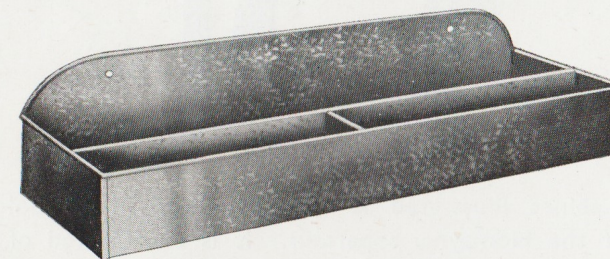
PREMIER CELLULOID WASTE BIN



It is one of the Council regulations that a receptacle be provided in the Rewinding room into which all odd scraps of film may be put. This Bin fulfils the regulations in every respect. The top is fitted with a spring controlled flap and for emptying purposes the whole top lifts off. It measures 11"×11"×12" deep and is finished in crystalline black enamel.

PRICE £1 12 6

PREMIER CARBON TRAY



This will be found to be a very useful accessory for any up-to-date Projection Room. It can be affixed to the wall in any convenient position. It consists of a tray partitioned off into three compartments, one to take carbons up to 24" long, the other two to take carbons up to 12" in length. It is stoutly made and is finished in crystalline black enamel.

PRICE 18/6