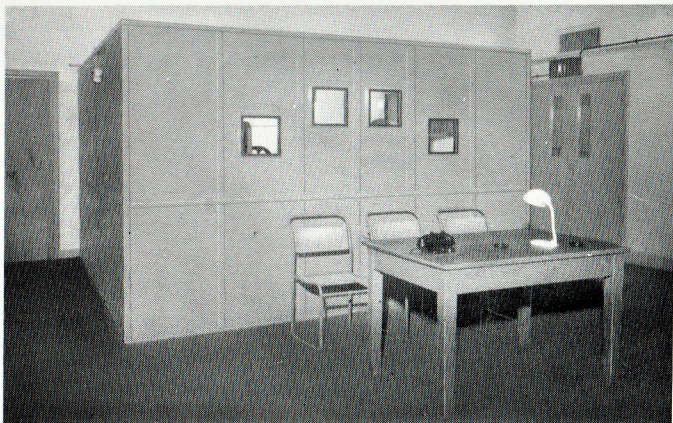




## OPERATING BOOTHS



This photograph illustrates a "PREMIER" Projection Booth specially manufactured for the British Broadcasting Corporation, and used for showing news rushes.

Of all metal construction it measures 11 ft.  $\times$  11 ft.  $\times$  7 ft. high, and is fitted with an air extraction fan, two doors and soundproof projection windows. It conforms to Fire Regulations, and can be erected and dismantled with comparative ease.

"PREMIER" Operating Booths are made to individual requirements and the manufacturers are pleased to give quotations on submission of details.



## RELEASE BOX



This Box is manufactured to conform with Statutory Regulations stipulating an outside release control for the Fire Shutters of the operating room.

The neatest method of effecting this is to carry the pull-off cable in from the operating room through conduit into a box fixed or recessed into the wall at the rear of the auditorium.

The "PREMIER" Release Box is manufactured in sheet metal with an ornamental front. It is finished in gilt to harmonise with the decoration of the auditorium. The front panel is glass with red lettering, as illustrated.

PRICE £2 . 0 . 0

BC 10/55/20

78



78

# FIRE SHUTTERS

together with

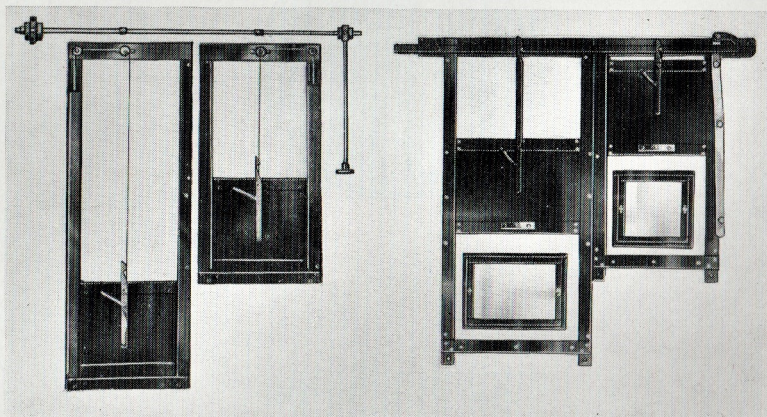
**OPERATING BOOTH**

**AND**

**EMERGENCY RELEASE BOX**



# FIRE



Counterweighted Shutters

Standard Shutters

## SPECIFICATION

Premier Shutters satisfy the constructional requirements of all the licensing authorities and are made of heavy gauge sheet steel sliding in substantial steel runners. The fitting of such Shutters, with glazed apertures, is obligatory in every operating room.

They are made to suit apertures of varying dimensions, and each set of Shutters is controlled both inside the operating room by levers which are fitted in convenient positions and also outside by a control suitably positioned in the Auditorium.

All the Shutters are release controlled from any one lever yet any individual Shutter may be raised or lowered independently.

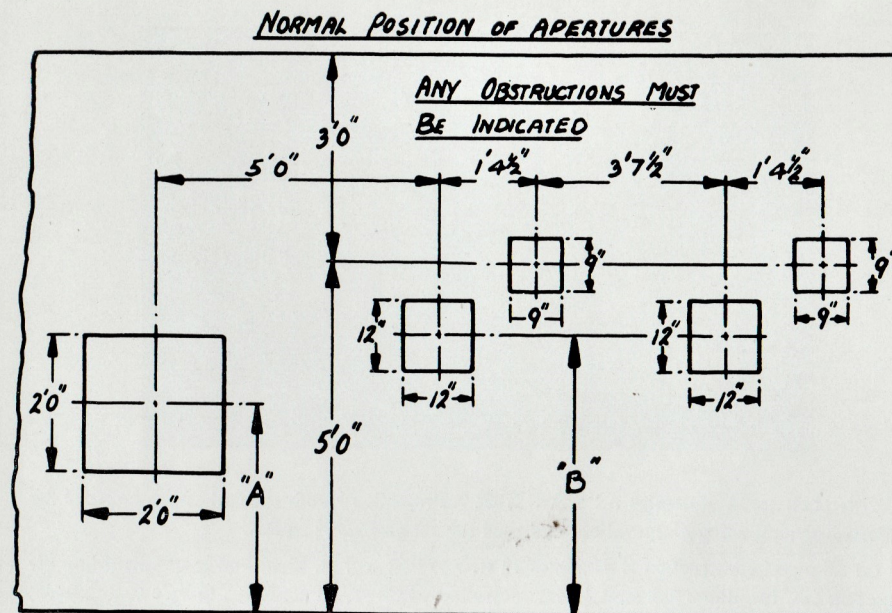
Two models are manufactured; the Counterweighted Model (as illustrated) each Shutter of which has its individual counterweight; and the Standard Model (also illustrated) which has no counterweight.

Windows are manufactured in two Models; the Soundproof (as illustrated above) which is felt lined and prevents any sound from the operating room entering the Auditorium; and the Standard which is unlined and more simply constructed.

Shutters and windows for other than the normal size apertures listed on the next page can be supplied at extra cost; prices on application.



# SHUTTERS



DIMENSIONS "A" AND "B" CAN ONLY BE DETERMINED WHEN POSITION AND RAKE OF THE PROJECTORS ARE KNOWN

## SCHEDULE OF PRICES

	Observation 9" x 9"	Projection 12" x 12"	Spotlight 24" x 24"
Standard Shutters .. ..	£ 5 . 0 . 0	£ 5 . 0 . 0	£10 . 0 . 0
,, Windows .. ..	£ 2 . 10 . 0	£ 2 . 10 . 0	£ 4 . 15 . 0
Counterweighted Shutters ..	£12 . 0 . 0	£12 . 0 . 0	£17 . 10 . 0
Soundproof Windows ..	£ 6 . 0 . 0	£ 6 . 0 . 0	£12 . 0 . 0

\* Special Sizes and Colours—Plus 10 per cent.

(When ordering please include sketch containing the dimensional data as enumerated in the above diagram. This sketch should be drawn when facing apertures from the projection room)

