



RELEASE BOX



In order to comply with the Act and Council requirements it is necessary to provide an outside release handle for the fire shutters of the Operating Room.

The neatest and most effective method of doing this is to carry the pull-off cable from the operating room through a piece of conduit into a box fixed or let into the wall.

The one illustrated is made in stout sheet metal with an ornamental front and a glazed aperture on which the words

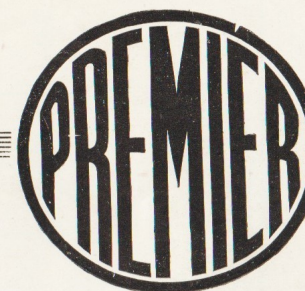
"EMERGENCY SHUTTER RELEASE"

are painted in red and through which the handle for dropping the shutters is visible.

The whole fitting is gilt and presents a nice external appearance to tone with the internal decorations of the theatre.

PRICE 30/-

33



FIRE SHUTTERS and OPERATING BOOTH

Manufactured by
ROBERT RIGBY LTD.

Premier Works
Northington Street
LONDON W.C.1

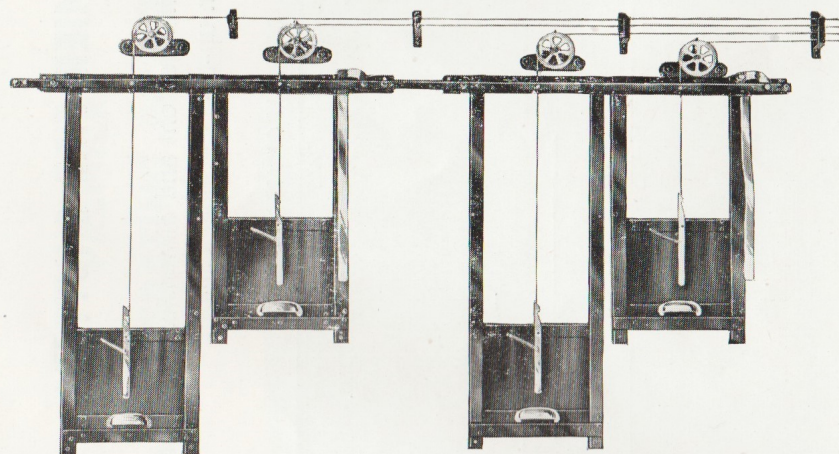
Phone HOLborn 2944 (2 lines)
Grams "Precinemat, Phone, London"

PREMIER FIRE SHUTTERS

In order to satisfy the requirements of the licensing authorities it is necessary for every operating room to be fitted with glazed apertures and fireproof metal shutters which can be operated automatically from within the operating room and also from a suitable position outside the operating room.

Our Premier Shutters are constructed to fulfil all the requirements of the licensing authorities, and are constructed of heavy gauge sheet steel sliding in substantial steel runners. They are made to suit apertures of varying dimensions, each set of shutters being controlled inside the operating room by the action of levers which are fitted in a convenient position for the operator, no matter which projection aperture he may be using. Provision is also made for a control in a suitable position in the auditorium.

All the shutters are controlled from any one lever, yet any individual shutter may be raised or lowered independently.

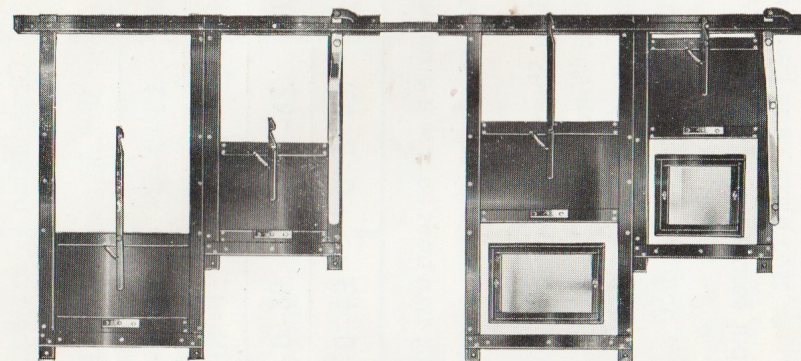


4 Counterweighted Shutters for 4 Apertures

The Counterweighted set of Shutters, illustrated above, are designed to meet the requirements of the Super Cinema. They are finished bright black enamelled with nickel-plated levers and handles.

Windows are made in two models. Standard or Soundproof. The Soundproof Windows are elaborately constructed, and are felt lined in order to prevent any sound from the operating room entering the auditorium.

For prices and standard aperture dimensions see schedule on centre page



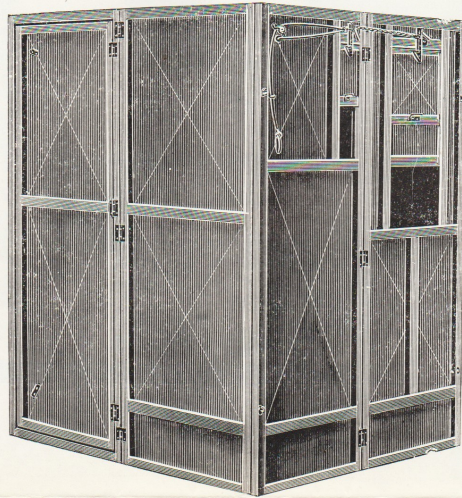
4 Standard Shutters for 4 Apertures

The Standard set of Shutters, illustrated above, are designed to meet the requirements of those Cinemas or Theatres which do not wish to go to the extra expense of fitting counterweighted shutters. They are finished bright black enamelled.

Windows are made in two models. Standard or Soundproof. The Soundproof Windows are elaborately constructed, and are felt lined in order to prevent any sound from the operating room entering the auditorium.

For prices and standard aperture dimensions see schedule on centre page.

PREMIER OPERATING BOOTH



This Booth is made in steel and is designed to meet the requirements of the Licensing Authorities in buildings where temporary shows are to be given and where no permanent operating room exists.

It is constructed in such a manner that it can be very easily and quickly erected and just as easily dismantled and stored away. Every section is hinged in the centre and the whole folds flat, occupying a very small storage space. The shutters are controlled either from inside or outside the enclosure and plate glass windows in metal frames are fitted to render as soundproof as possible. In special cases where inlet and outlet ventilating tubes are required, prices can be quoted if particulars are supplied.

The size of the Single Booth for one Projector is 5' wide, 6' deep, 7' high.

The size of the Double Booth for two Projectors is 10' wide, 7' deep, 7' high.

PRICES

For one Projector	£60
For two Projectors	£90

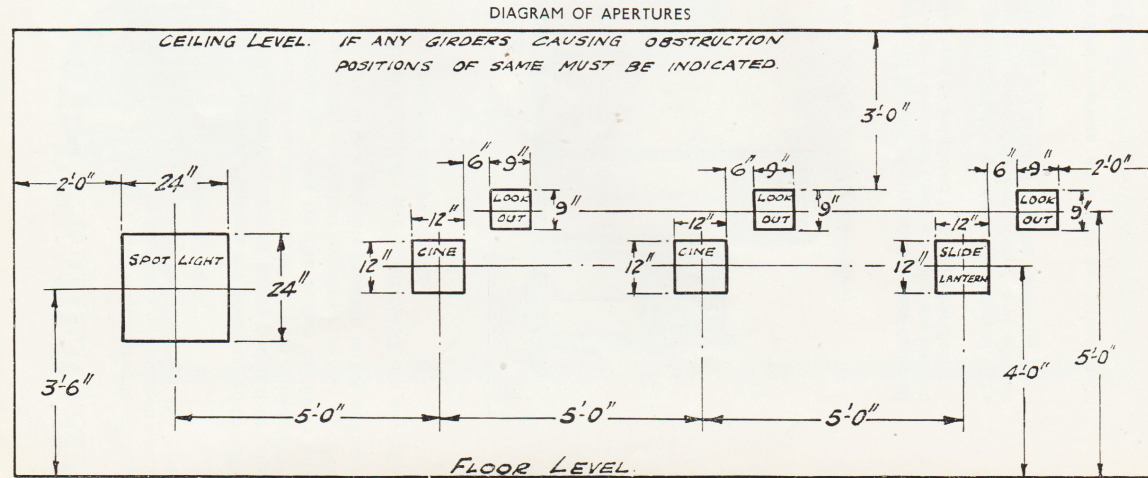
**These BOOTHS can also be HIRED for occasional Shows
at the following charges—**

Single Booth for one Projector	...	£3 per week
Double Booth for two Projectors	...	£5 per week

Plus carriage to and from the Works

PREMIER FIRE SHUTTERS

This Diagram shows the arrangement and dimensions of a set of apertures in an up-to-date Super Cinema



SCHEDULE OF PRICES

		Observation	Projection	Spotlight
		9" x 9"	12" x 12"	24" x 24"
Standard Shutters	each	£3 - 0 - 0	£3 - 0 - 0	£6 - 0 - 0
Standard Windows	each	£1 - 10 - 0	£1 - 10 - 0	£3 - 0 - 0
Counterweight Shutters	each	£8 - 0 - 0	£8 - 0 - 0	£12 - 0 - 0
Soundproof Windows	each	£4 - 0 - 0	£4 - 0 - 0	£6 - 0 - 0

Calculated from the above schedule it will be seen that for 1 set of 7 Shutters for 7 apertures to the dimensions of the diagram above, the cost would be as follows—

Standard Shutters	£24
Standard Windows	£12
Counterweight Shutters	£60
Soundproof Windows	£30

Shutters for other than the standard size apertures indicated above can be supplied at an extra cost