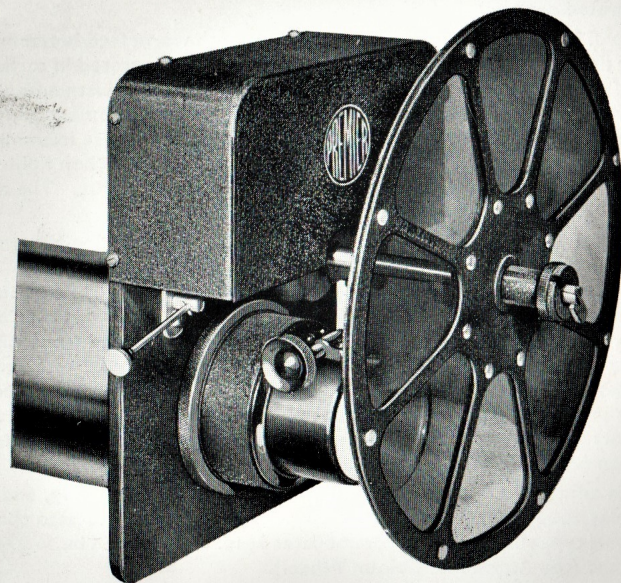




## AUTOMATIC COLOUR WHEEL



This fascinating device is particularly suited for use with the All-Purpose Projector. The colour wheel located at the front of the projector lens (as illustrated) rotates at a **slow or variable speed** by means of a clockwork motor (duration 1-2 hours) and used in conjunction with figured glass slides gives the most pleasing effects on the screen.

**As a background for Slide Projection or film titles, the effect is truly amazing.**

The wheel is fitted with combinations of coloured heat resisting gelatines and the complete unit **can be rotated on its own axis so that the changing colours move horizontally, vertically or diagonally** across the screen.

The catch on the wheel spindle allows the colour wheel to be rotated by hand.

The Device offers **infinite possibilities** to any Operator who wishes to enhance the value of his screen presentation.

The price is moderate and includes a set of five figured glass background slides.

~~£20 - 0 - 0~~    **£22 . 10 . 0**

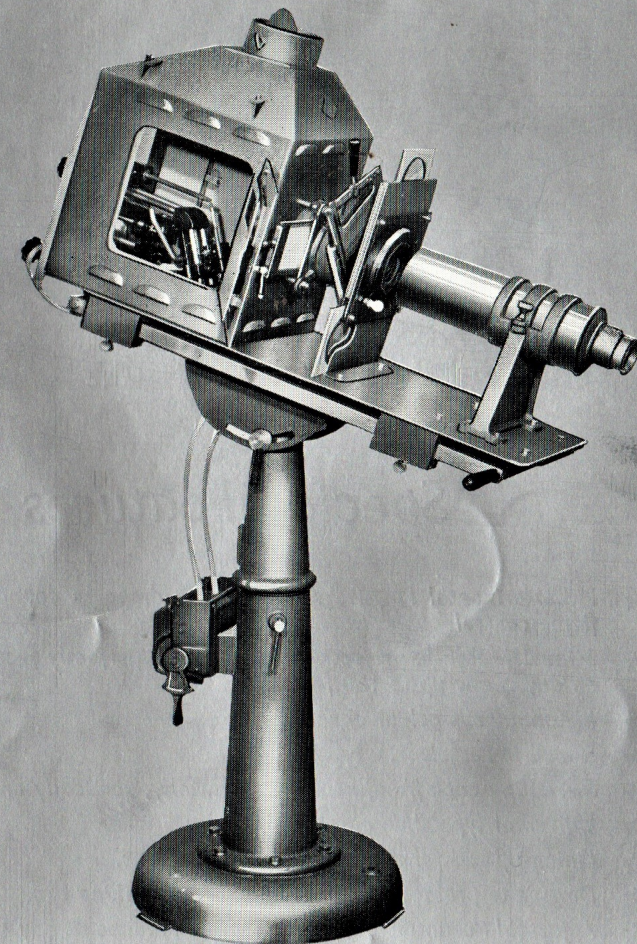
HPD 5.51

61

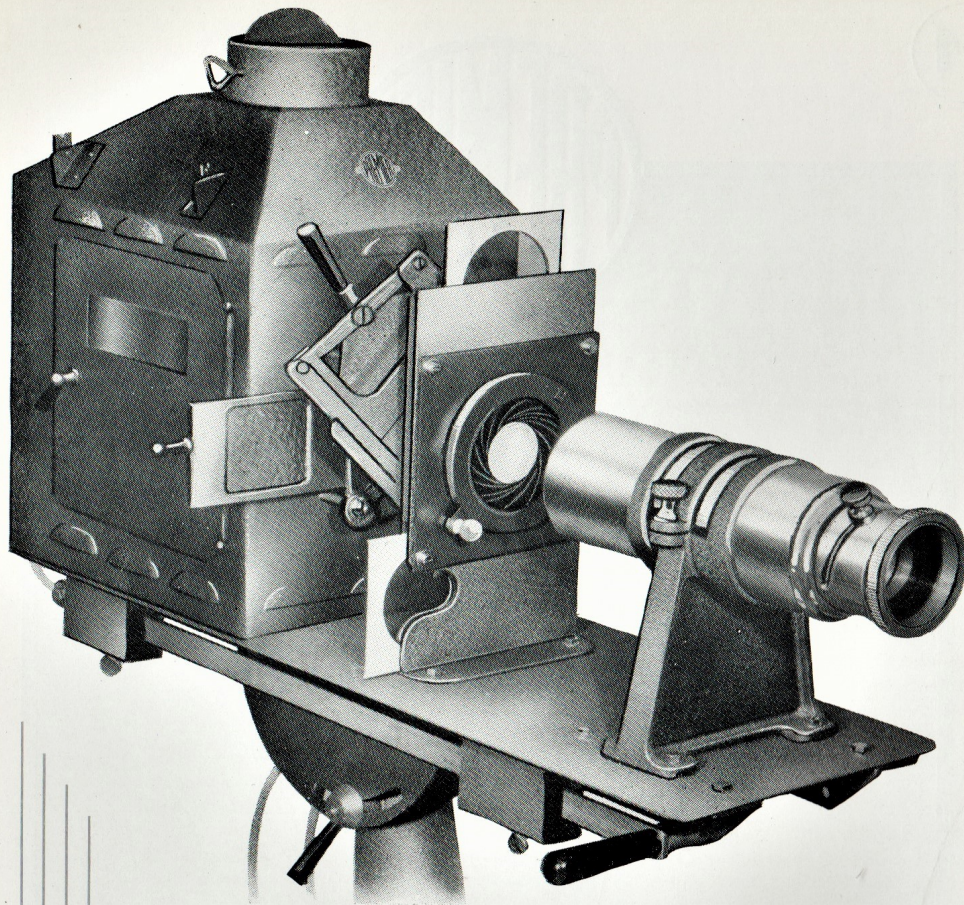


## ALL-PURPOSE PROJECTOR

(A COMBINED EFFECTS, SPOT AND SLIDE UNIT)







## Specification

**The Lamphouse** is constructed of steel with sloping roof terminating in a 5 in. diameter chimney with an adjustable damper; two light-tight doors with plastic covered handles and large oblong eyepieces; well *louvred* and fitted with internal linings for maximum ventilation; runners for arc lamp and screwed bush to accommodate crater focusing attachment; curtain rod; asbestos curtain, and a well balanced striking dowsers operated externally.

**The Arc Lamp** of 70/80 amperes D.C. capacity is a smooth worm feed horizontal positive and angular negative type and has *quick release fingers* incorporated in carbon carriages to allow of speedy recarboning. Lateral and height centre adjustments are provided and the *crater can be accurately focused* by a fine screw attachment at the rear of the lamphouse. A magnetic flame control is incorporated to ensure maximum control of the flame and is tested and set before leaving Works. The carbon holders are fitted with *self-aligning collets* supplied in pairs to suit any specified trim. The arc will accommodate standard lengths of carbon.

**The Optical Unit** consists of a 5 in. diameter cast condenser fitted with a rear heat-resisting lens and allowing for easy removal of same for cleaning purposes. A wide aperture 3 in. projection lens of varying foci from 16 in. to 26 in. is fitted in a spiral cast focusing mount which is screwed into a chromium plated front tube rigidly clamped in position by a substantially constructed support casting. The front tube travels freely through the support to focus the cut-off or iris when used as a spot, and obviates the removal of detachable parts when changing from slide projector to spotlight. Fitted to the projection lens mount is a spring loaded flasher head (not illustrated) enabling instantaneous or gradual dissolves to be made. The *lens spiral focusing movement can be clamped*.

**The Cut-Off** is adjustable for use horizontally, vertically, or diagonally, and is mounted on a circular tube where a spring loaded plunger accurately locates these positions. A Universal type slide carrier accommodates  $3\frac{1}{4}$  in.  $\times$   $3\frac{1}{4}$  in. or 4 in.  $\times$   $3\frac{1}{4}$  in. slides or effects glasses (see Automatic Colour Wheel).

A specially designed holder for *heat-resisting* Colour mediums gives instantaneous colour changes. These mediums are easily replaceable if damaged.

**The Stand Assembly** is of pedestal type constructed of cast iron and comprises circular base, outer and inner columns, the latter rotating in outer column. A 2 in. diameter hole is left in outer column for incoming mains leads and a 60 amperes D.P. ironclad switch with leads feeds to the arc terminals. Quadrant slots in the semi-circular top plates allow of free tilting movement and a robust clamp is supplied for locking. Lining-up rod ensures accurate positioning for screening after stage work (not illustrated).

**The Finish** is stove enamelled grey crinkle but any colour can be supplied at slight extra cost.

**Dimensions.** When using 26 in. lens on level throw 5 ft. 6 in.  $\times$  5 ft. 6 in.  $\times$  1 ft. 9 in. A spot porthole of 3 ft. 6 in. centre and measuring 24 in.  $\times$  24 in. is recommended.

**£90 - 0 - 0 £100**

(When ordering please state the carbon combination and lens focus required, and the height of spot porthole and angle of projection.)

## Special Features

- ★ *H.I. Horizontal Positive Arc* of 70/80 amperes capacity with magnetic flame control.
- ★ 3 in. *Achromatic projection lens* giving a perfectly focussed spot or slide on any throw up to 150 feet.
- ★ *Instantaneous colour changes.*
- ★ 5 in. *Iris Dissolver.*
- ★ *Swivelling cut-off* adjustable horizontally, vertically or diagonally.
- ★ *Universal type slide carriers.*
- ★ *Lining-up rod* for stage to screen alignment.
- ★ *Dowsers* to protect rear condenser when striking arc.
- ★ *Adjustable counterweights* for perfect balance at any angle.
- ★ *Controls can be reversed* for operating from either side.