

Norelco® **FP-16** PROFESSIONAL THEATRE AND AUDITORIUM 16MM MOTION PICTURE PROJECTOR

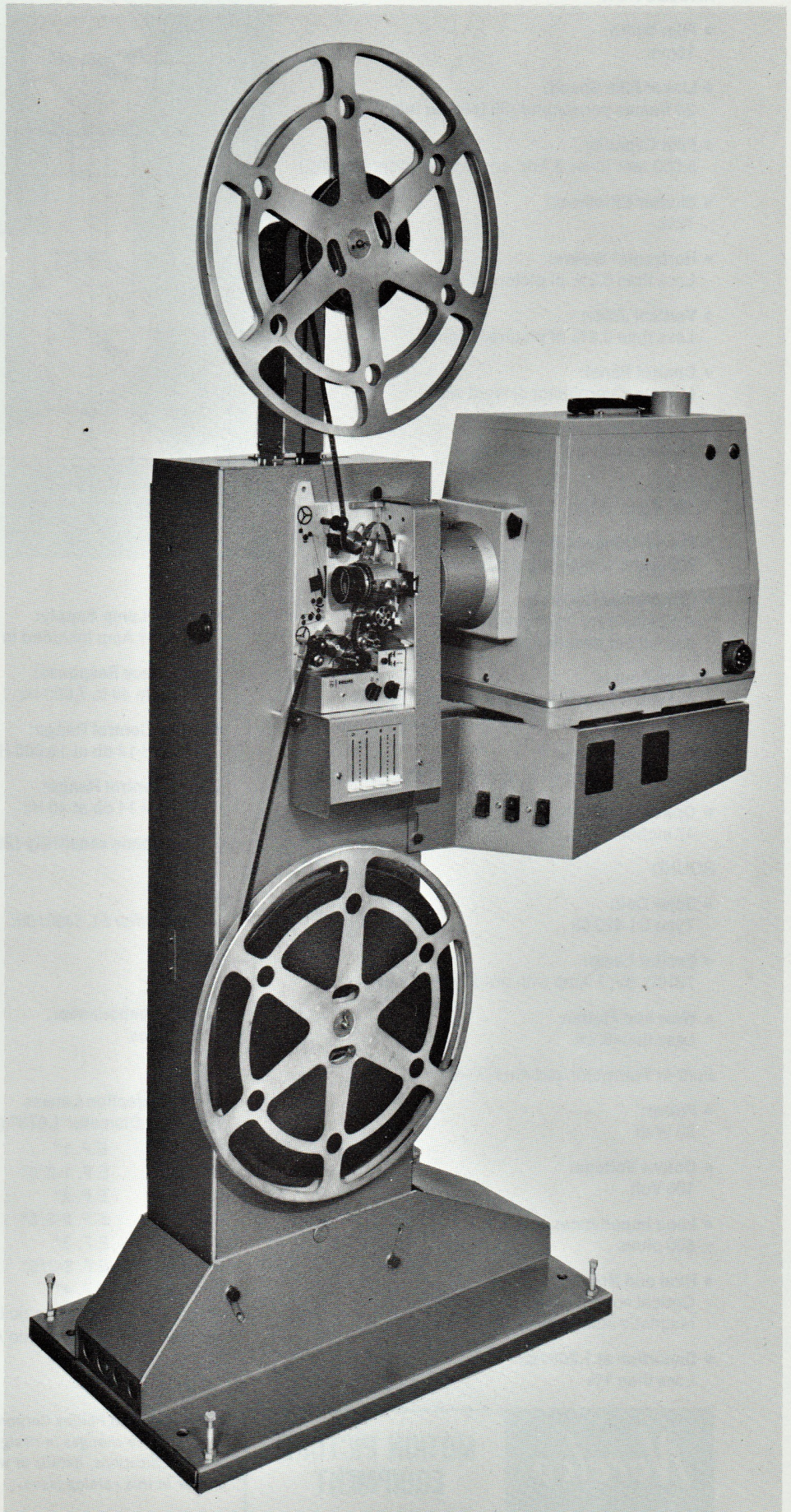
The **NORELCO FP-16** Professional 16mm Sound-Film Projector is designed for permanent installations, such as in screening rooms, school auditoriums and small theatres. This modern projector is simple to operate and easy to maintain.

The FP-16 projector is a sturdy, well built machine, precision engineered for long life and superior reliability. It is designed with a unique "grooved disc" intermittent mechanism and 12 tooth sprocket. The use of large feed, holdback and intermittent sprockets, always engaging at least five perforations, enables this projector to reduce print wear and show damaged prints that cannot be run on other projectors.

The left-hand operation of this projector has several advantages particularly in regard to print protection and sound reproduction. The profiled rollers, runner plate, pressure plate and sound drum preclude scratching either the sound track or the picture area, regardless of the emulsion position.

The sound optics and magnetic heads are all positioned toward the operating side and are easily accessible for cleaning and service adjustments when required.

The plug-in, solid state amplifiers feature an optimum frequency response curve. The sound head has low flutter and wow because of the rotary sound drum and pressure roller; the same construction is used in this projector as in the Norelco 35mm and 70/35mm professional projectors. There are vertical sliding potentiometers for microphone volume, film sound volume, bass and treble control.



Norelco® FP-16 PROFESSIONAL THEATRE AND AUDITORIUM 16MM MOTION PICTURE PROJECTOR

GENERAL SPECIFICATIONS

PROJECTION

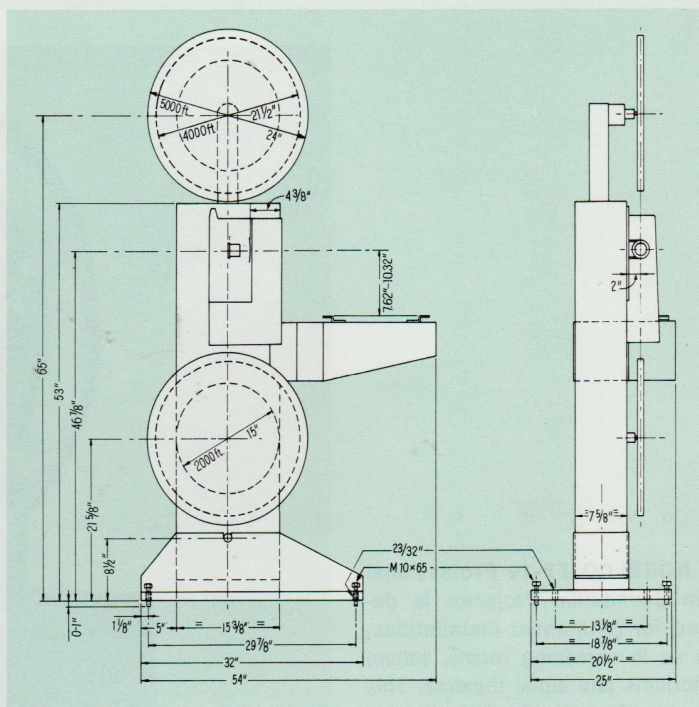
- **Film Width:**
16mm
- **Linear Film Speed:**
24 frames per second (36 feet per minute)
- **Film Capacity:**
5,000 feet (over 2 hrs. continuous programming)
- **Shutter Efficiency:**
72%
- **Horizontal Weave:**
Less than 0.2% of picture width
- **Vertical Jitter:**
Less than 0.2% of picture height
- **Control Panel:**
Mounts on projector or front wall
- **Picture Change-overs:**
Built-in push-pull theatre type
- **Motor:**
120 Volts, 60 Hz, 1 phase, Synchronous
- **Power Consumption:**
200 watts without light source
- **Lamphouse Bracket:**
Adjustable for any standard Xenon or carbon arc lamphouse
- **Lamphouse:**
Available with Norelco customized Xenon lamphouse, up to 1600 watt, with power supply
- **Projection Angle:**
Adjustable from +15° upward to 25° downward
- **Optical Centerline:**
47 inches minimum

SOUND

- **Solar Cell:**
Type C1 420 98
- **Exciter Lamp:**
7210C, 6V, 1 Amp with pre-focused base
- **Wow and Flutter:**
Less than 0.2%

Built-in Transistorized Amplifiers:

- **Power:**
20 Watt
- **Output Voltage:**
100 Volt
- **Load Impedance:**
500 ohms
- **Hum and Noise:**
Optical sound: better than — 60 dB
Magnetic sound: better than — 45 dB
- **Distortion at 1,000 Hz:**
Less than 1%



Net weight: 250 lbs., Shipping weight: 500 lbs.

- **Exciter Lamp Supply:**
6VDC—1 Amp included in power amplifier
- **Frequency Response:**
Flat from 40 to 7,000 Hz
- **Treble Control Range:**
—14 to +14 db at 10,000 Hz
- **Bass Control Range:**
—14 to +14 db at 40 Hz
- **Microphone sensitivity (20 W output):**
0.6 mV

Optional

Line Amplifier EL 5490/00:

- **Output:**
8 dbm
- **Output Impedance:**
600 ohms

LENSES

16mm Projection Lenses

Mounting Diameter 1.673" (42.5mm)

0161425	E.F. 1"	(25mm)	f/1.4
0161335	E.F. 1-2/5"	(35mm)	f/1.3
0161350	E.F. 2"	(50mm)	f/1.3
0161665	E.F. 2-3/5"	(65mm)	f/1.6
0161775	E.F. 3"	(75mm)	f/1.7
0162090	E.F. 3-3/5"	(90mm)	f/2.0
0162100	E.F. 4"	(100mm)	f/2.0
0163220	Anamorphic Lens		
EL5162/11	Anamorphic Adapter		

Norelco®

MOTION PICTURE
EQUIPMENT

North American Philips Corporation reserves the right to make changes in design, construction and specifications, details of which do not appear in this catalog issue.