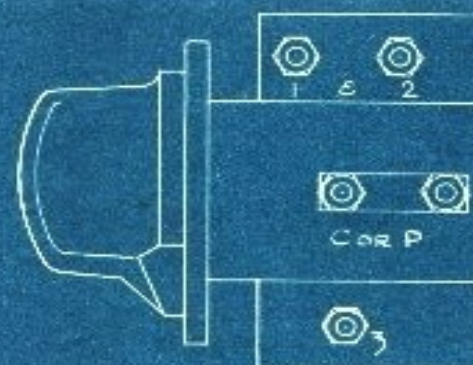


NOT TO SCALE

SWITCH SHOULD BE MOUNTED TO ESCUTCHEON PLATE WITH TERMINALS COR P AND NO 3, ON TOP. POSITIONING KNOB TURNED TO RIGHT, AS IN STRIKE POSITION CONNECTS TERMINALS "P" AND NO 1. POSITIONING KNOB TURNED FURTHER TO RIGHT, THAT IS REVERSE OF "OFF" POSITION, CONNECTS "P" TO NO 1, ALSO "P" TO NO 2, VIA COPPER STRAP. POSITIONING KNOB TURNED TO RUN POSITION CONNECTS "P" TO NO 1, "P" TO NO 2, VIA COPPER STRAP, AND "P" TO NO 3.

NOTE - IT IS ESSENTIAL THAT ANY CONNECTING LINK BETWEEN TERMINALS NOS 1 AND 2 SHOULD BE REMOVED.



PLAN

WESTINGHOUSE  
BRAKE & SIGNAL CO.

METHOD OF MOUNTING AND WIRING DIAMOND H SWITCHES  
SUPPLIED AS REPLACEMENTS FOR ARROW ELECTRIC SWITCHES  
FOR CINEMA ARC SETS

DRAWN BY *[Signature]*  
APPROVED BY *[Signature]*  
DRG. NO. I.C.A. 8