



“Regal” High Intensity  
Arc Lamp Type N.L.

SPARE PARTS LIST

SOLE MAKERS :

**A. KERSHAW & SON, LEEDS 8**

(ENGLAND)

(Branch of Soho Limited)

SOLE DISTRIBUTORS :

**KALEE LIMITED**

Head Office :

NATIONAL HOUSE, 60/66 Wardour Street,  
LONDON, W.1

Telephone :  
Gerrard 5137-8-9

Telegrams :  
Ellangrica Rath London

Branches :

BELFAST : 49 Donegall Street Telephone 27065

BIRMINGHAM : 16 John Bright Street

Telephone : Midland 3619

CARDIFF : 9 Park Lane

Telephone 7676

DUBLIN : 34 Lower Abbey Street

Telephone 45059

GLASGOW : 211 Hope Street

Telephone : Douglas 1305

LEEDS : 17 Wellington Street

Telephone 28259

MANCHESTER : Parsonage Chambers, 3 The Parsonage

Telephone : Blackfriars 8317

NEWCASTLE : 2, Cross Street

Telephone 23038



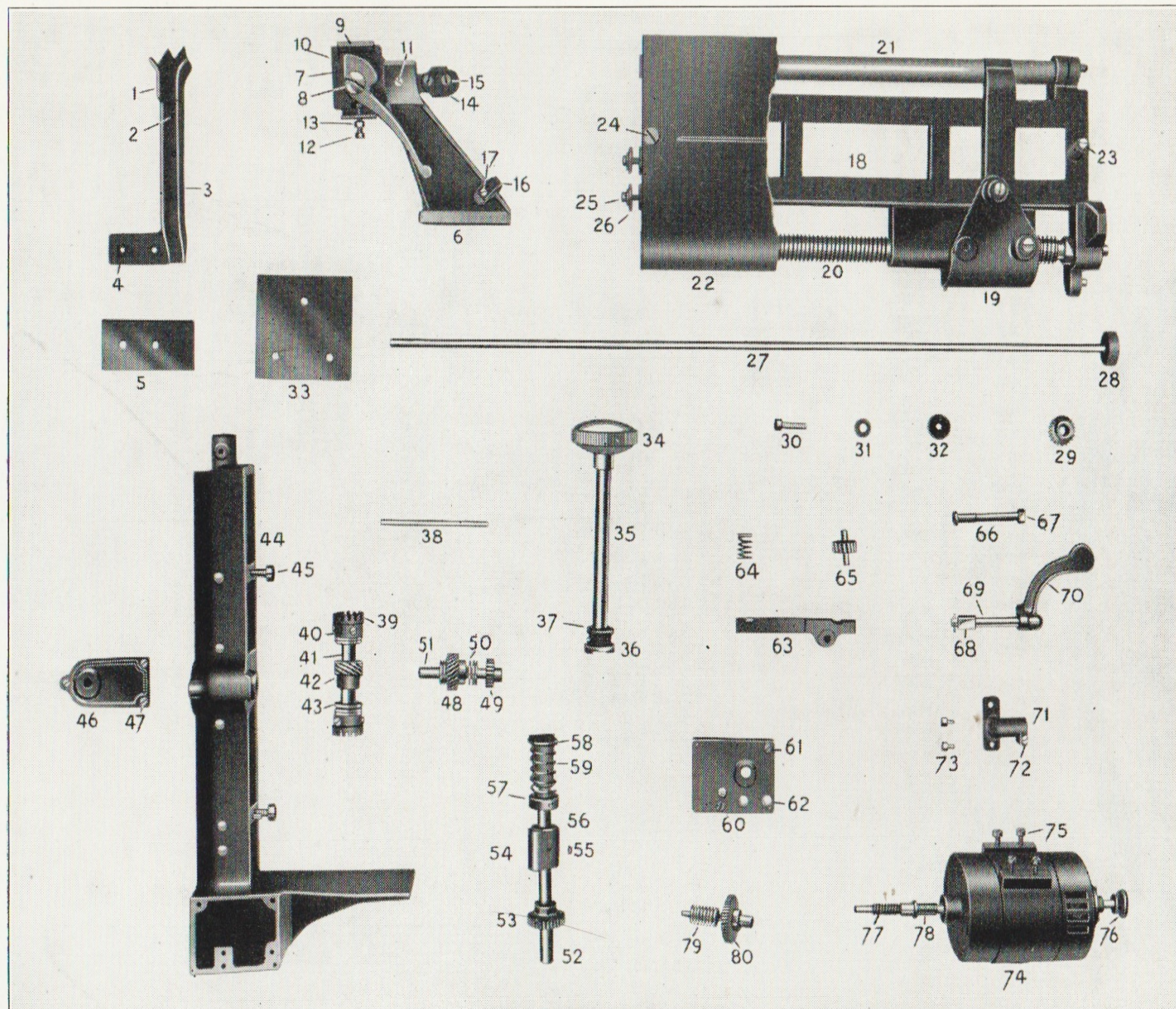


PLATE 1



## PLATE 1

| Part No. | Description                  |
|----------|------------------------------|
| NL1.     | Guide, Positive Carbon.      |
| NL2.     | Screw, Guide Securing.       |
| NL3.     | Bracket, Pos. Carbon Guide.  |
| NL4.     | Bush, Insulating.            |
| NL5.     | Insulation, Guide Bracket.   |
| NL6.     | Bracket, Pos. Carbon.        |
| NL7.     | Lever, Clamping.             |
| NL8.     | Screw, Clamping Lever Pivot. |
| NL9.     | Clamp, Pos. Carbon.          |
| NL10.    | Bracket, Pos. Carbon Holder. |
| NL11.    | Screw, Pos. Carbon Pivot.    |
| NL12.    | Screws, Adjusting.           |
| NL13.    | Nut.                         |
| NL14.    | Clamp, Pos. Lead.            |
| NL15.    | Screw, Clamp Securing.       |
| NL16.    | Clip, Cable.                 |
| NL17.    | Screw, Clip Securing.        |
| NL18.    | Base, Pos. Carbon.           |
| NL19.    | Casting, Saddle.             |
| NL20.    | Screw, Pos. Feed.            |
| NL21.    | Tube, Slide.                 |
| NL22.    | Guard.                       |
| NL23.    | Screws, Guard Sec.           |
| NL24.    | Screw, Pos. Carbon Base.     |
| NL25.    | Screw, Guide Bracket.        |

| Part No. | Description                            |
|----------|--|
| NL26.    | Washer, Insulating.                    |
| NL27.    | Rod, Neg. Feed.                        |
| NL28.    | Collar, Neg. Feed Rod.                 |
| NL29.    | Gear, Pos. Feed.                       |
| NL30.    | Screw, Pos. Carbon Bracket.            |
| NL31.    | Washer.                                |
| NL32.    | Cup, Insulating.                       |
| NL33.    | Plate, Insulating.                     |
| NL34.    | Knob, Pos. Hand Feed.                  |
| NL35.    | Spindle, Pos. Hand Feed.               |
| NL36.    | Clutch, Pos. Hand Feed Male (L. Side). |
| NL37.    | Washer, Leather.                       |
| NL38.    | Rod, Pos. Clutch.                      |
| NL39.    | Clutch, Pos. Female.                   |
| NL40.    | Screw, Clutch Securing.                |
| NL41.    | Spindle, Pos. Clutch.                  |
| NL42.    | Gear, Pos. Driver.                     |
| NL43.    | Race, Ball.                            |
| NL44.    | Casting, Auto Drive.                   |
| NL45.    | Screw, Auto Drive Securing.            |
| NL46.    | Plate, Right Angle Gear Cover.         |
| NL47.    | Screw, Cover Plate Securing.           |
| NL48.    | Gear, Pos. Driven Right Angle.         |

| Part No. | Description                   |
|----------|-------------------------------|
| NL49.    | Gear, Pos. Feed.              |
| NL50.    | Race, Ball.                   |
| NL51.    | Spindle, Right Angle Gear.    |
| NL52.    | Shaft, Pos. Feed Clutch.      |
| NL53.    | Wheel, Vertical Worm.         |
| NL54.    | Cam.                          |
| NL55.    | Key, Woodruff.                |
| NL56.    | Washer.                       |
| NL57.    | Collar, Spring.               |
| NL58.    | Clutch, Pos. Male (R. Side).  |
| NL59.    | Spring, Clutch.               |
| NL60.    | Plate Cover.                  |
| NL61.    | Screw, Cover Plate Securing.  |
| NL62.    | Lubricator.                   |
| NL63.    | Lever, Pos. Feed.             |
| NL64.    | Spring.                       |
| NL65.    | Wheel, Worm.                  |
| NL66.    | Screw, Pivot.                 |
| NL67.    | Nut.                          |
| NL68.    | Block, Thrust.                |
| NL69.    | Spindle, Eccentric.           |
| NL70.    | Handle, Pos. Carbon Feed.     |
| NL71.    | Socket, Elbow.                |
| NL72.    | Screw, Conduit Clamp.         |
| NL73.    | Screw, Elbow Socket Securing. |
| NL74.    | Motor.                        |
| NL75.    | Screw, Motor Securing.        |
| NL76.    | Button, Motor.                |
| NL77.    | Worm, Motor.                  |
| NL78.    | Spring, Motor.                |
| NL79.    | Worm, Vertical.               |
| NL80.    | Wheel, Horizontal Worm.       |



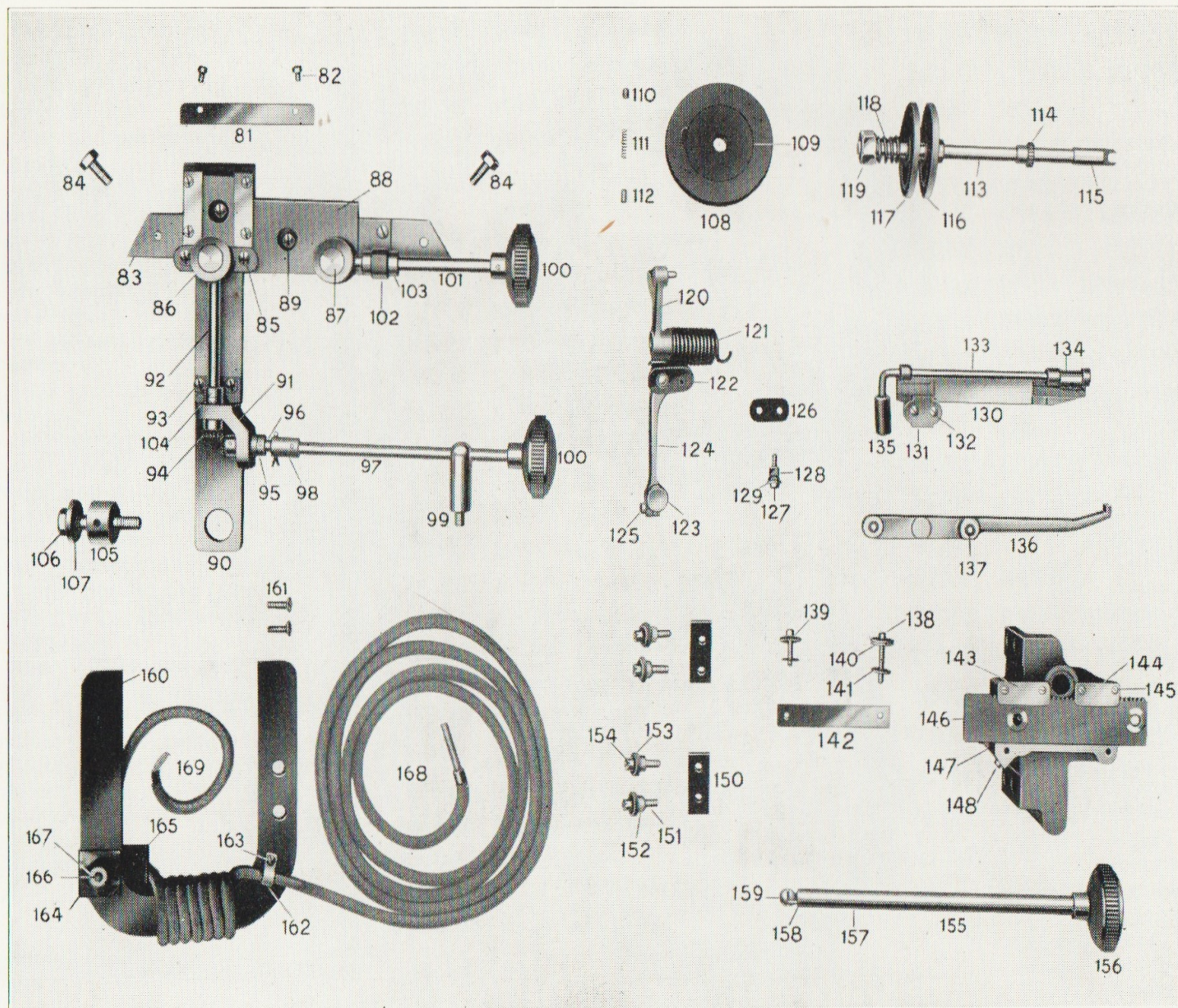


PLATE 2



## PLATE 2

Part No.      Description

NL81. Strip, Long Bearing.  
 NL82. Screw, Strip Securing.  
 NL83. Bar, Horizontal Slide.  
 NL84. Screw, Slide Bar Securing.  
 NL85. Screw Bracket Securing  
 Screw.  
 NL86. Bracket, Vertical Screw.  
 NL87. Nut, Floating.  
 NL88. Bracket, Horizontal Slide.  
 NL89. Screw, Stop.  
 NL90. Bar, Vertical Slide.  
 NL91. Bracket, Bevel Gear  
 Bearing.  
 NL92. Screw, Vertical.  
 NL93. Screw, Bearing Bracket  
 Securing.  
 NL94. Gear, Mitre.  
 NL95. Collar.  
 NL96. Spindle, Mitre Gear.  
 NL97. Spindle, Vertical Adjusting.  
 NL98. Tube, Connecting.  
 NL99. Pillar.  
 NL100. Knob.  
 NL101. Screw, Horizontal.  
 NL102. Bracket, Horizontal Screws.  
 NL103. Collar.  
 NL104. Bush, Mitre Gear.  
 NL105. Screw, Lower Spacing.  
 NL106. Nut.  
 NL107. Washer.  
 NL108. Rim, Clutch.  
 NL109. Hub, Clutch.  
 NL110. Roller, Clutch.

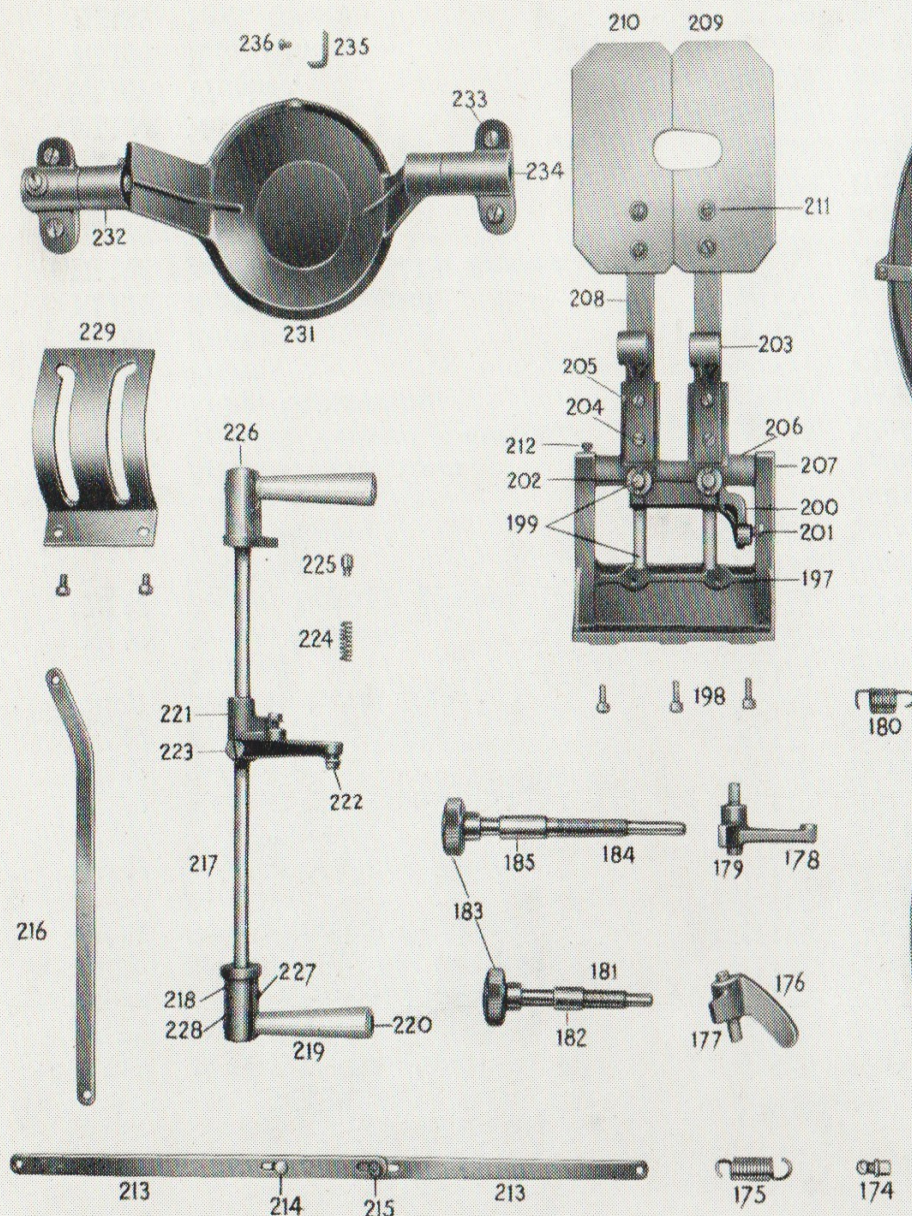
Part No.      Description

NL111. Spring, Clutch Roller.  
 NL112. Screw, Spring Tension.  
 NL113. Spindle, Clutch.  
 NL114. Gear, Neg. Feed.  
 NL115. Connection, Universal Joint.  
 NL116. Spigot, Clutch.  
 NL117. Plate, Clutch.  
 NL118. Spring, Clutch.  
 NL119. Nut.  
 NL120. Bracket, Clutch.  
 NL121. Spring, Clutch Bracket.  
 NL122. Insulation Mica.  
 NL123. Screw, Adjusting.  
 NL124. Arm, Clutch Bracket.  
 NL125. Screw, Clamp.  
 NL126. Insulation, Clutch Arm.  
 NL127. Screw, Clutch Arm  
 Securing.  
 NL128. Bush, Mica.  
 NL129. Washer, Steel.  
 NL130. Holder, Neg. Carbon.  
 NL131. Clamp, Lead.  
 NL132. Screw, Lead Clamp.  
 NL133. Rod, Neg. Carbon Clamp.  
 NL134. Clamp, Neg. Carbon  
 Eccentric.  
 NL135. Handle, Clamp Rod.  
 NL136. Guide, Neg. Carbon.  
 NL137. Bush, Mica.  
 NL138. Screw, Guide Securing  
 (long).  
 NL139. Screw, Guide Securing  
 (short).

NL140. Washer, Mica.  
 NL141. Washer, Insulating.  
 NL142. Guide, Bottom Rack.  
 NL143. Guide, Top Rack (long).  
 NL144. Guide, Top Rack (short).  
 NL145. Screw, Top Rack Securing.  
 NL146. Rack, Neg. Feed.  
 NL147. Spring, Rack.  
 NL148. Screw, Rack Spring.  
 NL149. Body, Neg. Feed.  
 NL150. Strip, Insulating.  
 NL151. Screw, Neg. Feed Body  
 Securing.  
 NL152. Bush, Insulating.  
 NL153. Washer, Mica.  
 NL154. Washer, Steel.  
 NL155. Rod, Extension.  
 NL156. Knob, Neg. Hand Feed.  
 NL157. Insulation, Extension Rod.  
 NL158. Connection, Universal Joint.  
 NL159. Ball, U.J. Connecting.  
 NL160. Magnet.  
 NL161. Screw, Magnet Securing.  
 NL162. Clips, Cable.  
 NL163. Screw, Cable Clip  
 Securing.  
 NL164. Insulation, Mica (small).  
 NL165. Insulation, Mica (large).  
 NL166. Stud, Cable Securing.  
 NL167. Nut.  
 NL168. Cable, Neg. Carbon Main.  
 NL169. Cable, Neg. Carbon to  
 Magnet.



# PLATE 3



| Part No. | Description                           |
|----------|---------------------------------------|
| NL170.   | Mounting Drum.                        |
| NL171.   | Plate, Reflector Setting.             |
| NL172.   | Screw, Setting Plate Securing.        |
| NL173.   | Screw, Adjusting Clamp.               |
| NL174.   | Peg, Locating.                        |
| NL175.   | Spring, Upper Reflector.              |
| NL176.   | Lever, Upper Reflector.               |
| NL177.   | Pin, Upper Reflector Lever Pivot.     |
| NL178.   | Lever, Lower Reflector.               |
| NL179.   | Pin, Lower Reflector Lever Pivot.     |
| NL180.   | Spring, Lower Reflector.              |
| NL181.   | Screw, Upper Reflector Adjusting.     |
| NL182.   | Tube, Stop.                           |
| NL183.   | Knob, Mirror Control.                 |
| NL184.   | Screw, Lower Reflector Adjusting.     |
| NL185.   | Tube, Stop.                           |
| NL186.   | Drum, Reflector.                      |
| NL187.   | Clips, Reflector.                     |
| NL188.   | Screw, Clip Securing.                 |
| NL189.   | Spring, Reflector.                    |
| NL190.   | Bracket, Drum.                        |
| NL191.   | Rod, Guide.                           |
| NL192.   | Screw, Reflector Adjusting.           |
| NL193.   | Nut, Lock.                            |
| NL194.   | Collar.                               |
| NL195.   | Tube, Stop.                           |
| NL196.   | Knob, Mirror Adjusting.               |
| NL197.   | Bracket, Dowser Fixed.                |
| NL198.   | Screw, Dowser Fixed Bracket Securing. |
| NL199.   | Rods, Guide.                          |
| NL200.   | Bracket, Rotating.                    |
| NL201.   | Screw, Pivot.                         |
| NL202.   | Washer.                               |
| NL203.   | Weight, Dowser.                       |
| NL204.   | Screw, Weight Securing.               |
| NL205.   | Insulation, M                         |



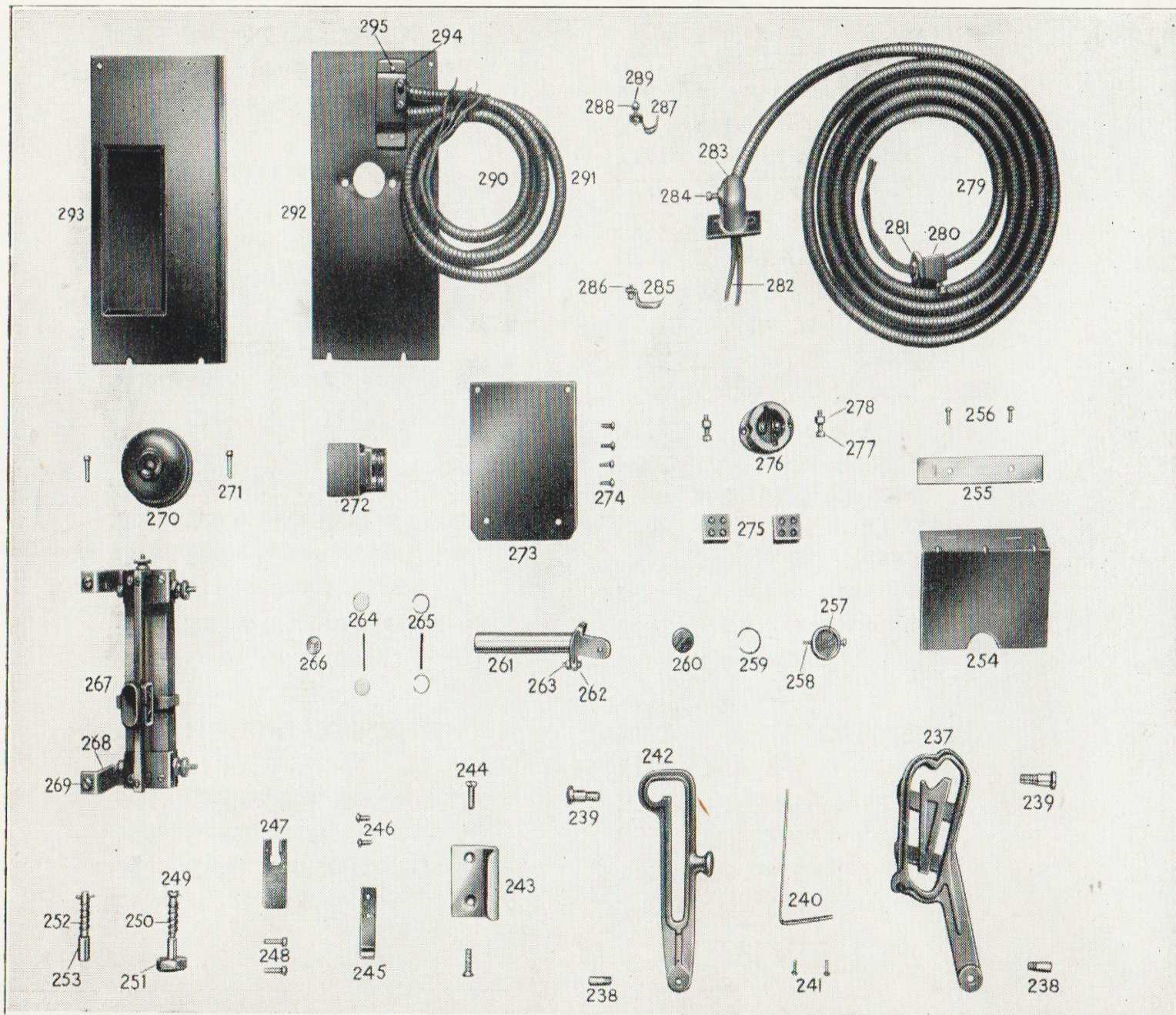
## PLATE 3 (Continued)

| Part No. | Description                       |
|----------|-----------------------------------|
| NL206.   | Tube, Spacing.                    |
| NL207.   | Spindle, Pivot.                   |
| NL208.   | Arm, Dowser.                      |
| NL209.   | Dowser, L.H.                      |
| NL210.   | Dowser, R.H.                      |
| NL211.   | Screw, Dowser Securing.           |
| NL212.   | Screw, Dowser Spindle Securing.   |
| NL213.   | Link, Dowser Connecting.          |
| NL214.   | Screw, Connecting Link.           |
| NL215.   | Washer.                           |
| NL216.   | Link, Cut Off Connecting.         |
| NL217.   | Spindle, Dowser Bell Crank.       |
| NL218.   | Boss, Dowser Handle (L.H.)        |
| NL219.   | Handle, Dowser.                   |
| NL220.   | Screw, Handle Securing.           |
| NL221.   | Lever, Bell Crank.                |
| NL222.   | Screw, Pivot.                     |
| NL223.   | Screw, Bell Crank Lever Securing. |
| NL224.   | Spring Plunger.                   |
| NL225.   | Plunger.                          |
| NL226.   | Boss, Dowser Handle (R.H.)        |
| NL227.   | Screw, Grub.                      |
| NL228.   | Spindle, Handle.                  |
| NL229.   | Plate, Pivot Guide.               |
| NL230.   | Screw, Guide Plate Securing.      |
| NL231.   | Cut Off, Light.                   |
| NL232.   | Bracket, Bearing.                 |
| NL233.   | Screw, Bearing Bracket Securing.  |
| NL234.   | Spindle, Light Cut Off.           |
| NL235.   | Stop, Light Cut Off.              |
| NL236.   | Screw, Stop Securing.             |

## PLATE 4

| Part No. | Description                  | Part No. | Description                     |
|----------|------------------------------|----------|---------------------------------|
| NL237.   | Stop, Door (Operating Side). | NL262.   | Screw, Periscope Securing.      |
| NL238.   | Screw, Pivot.                | NL263.   | Nut.                            |
| NL239.   | Screw, Door Stop.            | NL264.   | Lens, Periscope.                |
| NL240.   | Spring, Door Stop.           | NL265.   | Ring, Spring.                   |
| NL241.   | Screw, Spring Securing.      | NL266.   | Lens, Periscope.                |
| NL242.   | Support, Door.               | NL267.   | Potentiometer.                  |
| NL243.   | Handle, Rear Door.           | NL268.   | Bracket, Potentiometer.         |
| NL244.   | Screw, Handle Securing.      | NL269.   | Screw, Bracket Securing.        |
| NL245.   | Catch, Door.                 | NL270.   | Switch.                         |
| NL246.   | Screw, Catch Securing.       | NL271.   | Screw, Switch Securing.         |
| NL247.   | Plate, Mirror Mount Latch.   | NL272.   | Box, Fuse.                      |
| NL248.   | Screw, Latch Plate.          | NL273.   | Cover, Lamphouse Side Panel.    |
| NL249.   | Latch, Mirror Mount.         | NL274.   | Screws, Cover Securing.         |
| NL250.   | Spring, Latch.               | NL275.   | Connector Porcelain.            |
| NL251.   | Plunger, Latch.              | NL276.   | Socket, Pilot Lamp.             |
| NL252.   | Spring, Plunger.             | NL277.   | Screw, Socket Securing.         |
| NL253.   | Plunger, Mirror Mount.       | NL278.   | Nut.                            |
| NL254.   | Holder, Card.                | NL279.   | Conduit, Flexible (8' 6" long). |
| NL255.   | Plate, Stiffening.           | NL280.   | Socket Screwed.                 |
| NL256.   | Screw, Card Holder Securing. | NL281.   | Nut.                            |
| NL257.   | Holder, Mirror.              | NL282.   | Cable (9' 0" long).             |
| NL258.   | Screw, Mirror Holder Pivot.  | NL283.   | Socket, Straight Flanged.       |
| NL259.   | Ring, Mirror Spring.         |          |                                 |
| NL260.   | Mirror, Periscope.           |          |                                 |
| NL261.   | Bracket, Periscope.          |          |                                 |





## PLATE 4 (Continued)

| Part No. | Description                            |
|----------|--|
| NL284.   | Screw, Conduit Securing.               |
| NL285.   | Clip, Cable.                           |
| NL286.   | Screws, Clip Securing.                 |
| NL287.   | Clip, Cable.                           |
| NL288.   | Screw, Clip Securing.                  |
| NL289.   | Nut.                                   |
| NL290.   | Conduit Flexible<br>(2' 0" long).      |
| NL291.   | Conduit Flexible<br>(2' 1½" long).     |
| NL292.   | Panel, Inside L/House<br>Front (L.H.). |
| NL293.   | Panel, Inside L/House<br>Front (R.H.). |
| NL294.   | Socket, Cable (Double).                |
| NL295.   | Screw, Cable Securing.                 |