

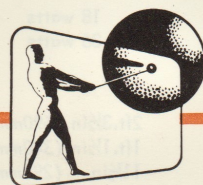
A 808

Issue 1/957

# GAUMONT-KALEE

**18 Watt AMPLIFIERS  
TYPES 808 - 810 - 811**

## **MANUAL and SPARES LIST**



**RANK PRECISION INDUSTRIES LTD.**

**GAUMONT-KALEE DIVISION**

**37-41 Mortimer Street, London W.1, England**

**Telephone : Museum 5432**

**Cables : 'RANKALEE LONDON'**



## GAUMONT-KALEE



## 18 Watt SINGLE INSTALLATIONS

Type 808

or

Type 811 (For use with  
GK37 projection equipment)18 Watt DUAL,  
and  
36 Watt INSTALLATIONSType 810 'A' amplifier  
with

Type 811 'B' amplifier

## 18 Watt AMPLIFIERS

## TYPES 808 - 810 - 811

## SPECIFICATION

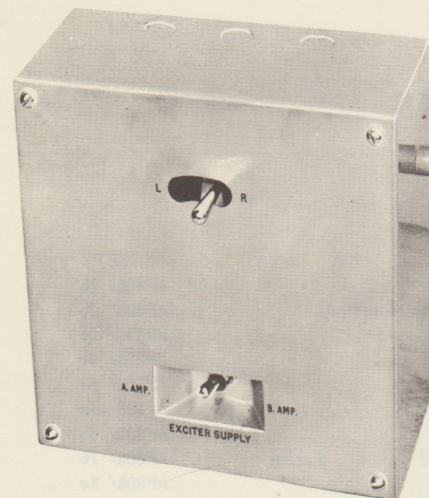
Output (Single amplifier)  
Output (Combined 'A' and 'B' of Dual channel)  
Mains supplies required:- 100 - 125 volts, or 210 - 250 volts,  
at 40 - 100 c.p.s.

Height  
Width  
Depth  
Weight (nett)

18 watts  
36 watts

2ft.3½in (690mm)  
1ft.1½in (340mm)  
11½in (290mm)  
89 lb (33.2kg)

## OPERATORS' MANUAL



## TYPE 814 (Part No 814000) CHANGE-OVER BOX

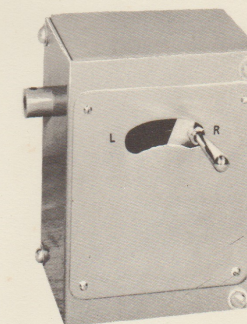
Used with dual amplifier installations and comprises  
Change-over switch box (Part No 814001) and Remote  
Change-over control (Part No 522150)

## SWITCH BOX PART No 814,001

Height	7¼in (185mm)
Width	7½in (190mm)
Depth	4in (100mm)
Weight (nett)	4½lbs (2.938kg)

## REMOTE CHANGE-OVER CONTROL PART No 522,150

Height	4¾in (120mm)
Width	3¾in (95mm)
Depth	4in (100mm)
Weight (nett)	2lb (0.907kg)





# CONTENTS

## SPECIFICATION

## INTRODUCTION

## OPERATION

## GENERAL MAINTENANCE

## CIRCUIT

## DIAGRAMS

## SPARE PARTS LIST

## Amplifiers

Sound change-over and remote controls

Installation dimensions

Microphone facilities

Single amplifier installations

Dual amplifier installations

Chassis (Part No 808003)

Facing

Early mains transformers

Wall mounting tray (Part No 808007)

Wall mounting tray (Part No 810001) Facing

Wall mounting tray (Part No 811001)

## SHEET

AP808/ 1b

AP808/ 3a

AP808/ 4a

AP808/ 4b

AP808/ 5a

AP808/ 5a

AP808/ 5b

AP808/ 7b

AP808/ 8a

AP808/ 9a

AP808/ 9b

AP808/11a

AP808/ 6b



## Introduction

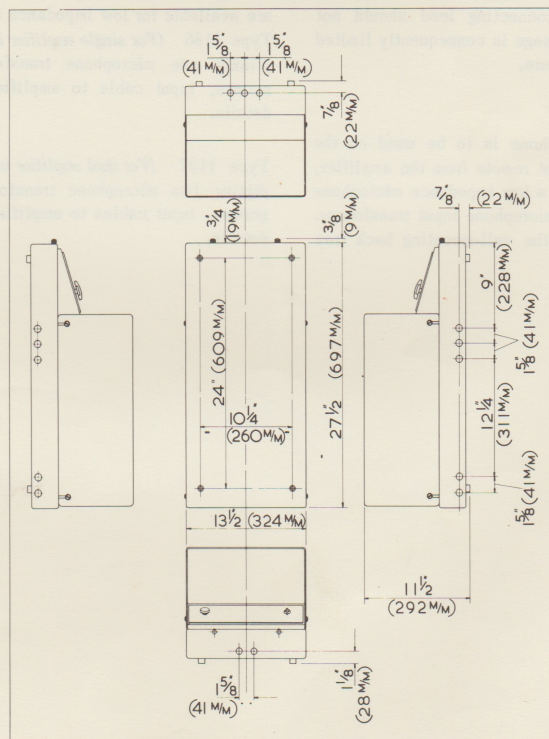
These amplifiers are rated for continuous operation under tropical conditions, and all metal parts are rust-resistant. The wiring and components are easily accessible for servicing.

For 18 watt installations one Type 808 amplifier is generally employed, but when an 18 watt amplifier is to be used in conjunction with GK 37 projection equipment Type 811 is used. In dual amplifier installations the Type 810 is known as the "A" amplifier, and the Type 811 as the "B" amplifier. This convention is used on the switch designations fitted to the amplifiers, and will be maintained throughout the following description.

Although the Type 808, 810 and 811 amplifier equipments have different applications, all have the same amplifier chassis, (Part No 808003) the variations being confined to the terminal layouts and switching facilities provided in the wall mounting back trays.

Each amplifier chassis in one self contained unit, comprises the complete amplifier chain, the main volume control, the film-disc-microphone switch, the exciter lamp supply circuit giving 8 volts 4 amperes D.C., and the monitor speaker.

### INSTALLATION DIMENSIONS FOR 18 watt AMPLIFIERS



On the current range of amplifiers the incorporated mains transformer (Part No. 808013) has tapings which provide for supply voltages of 100/125 volts and 210/250 volts at 40/100 c.p.s. Earlier productions were in two ranges:-

Types 808, 810 and 811 for 190/260 volt operation, using mains transformer Part No. 369001 or 369050.

Types 809, 812 and 813 for 95/130 volt operation, using mains transformer Part No. 369002 or 415050.

The current mains transformer (Part No. 808013) is now the replacement for any of the foregoing transformers and is physically and electrically interchangeable.

## Microphone input facilities

The amplifiers as supplied may be used with a high impedance microphone connected direct to the microphone input terminals. With this type of microphone the interconnecting lead should not exceed 12ft (3.5m) and usage is consequently limited to the operating enclosure.

Where the microphone is to be used on the stage, or at some point remote from the amplifier, it is necessary to use a low impedance microphone (20 to 60 ohms) and a microphone input transformer. Provision is made in the wall-mounting back tray

for the addition of a suitable microphone input transformer (Part No. 569020) and one transformer is required for each amplifier. Two conversion kits are available for low impedance microphone input:- Type 1186 (For single amplifier installations) Comprising one microphone transformer with fixing screws, input cable to amplifier and connection details.

Type 1187 (For dual amplifier installations) Comprising two microphone transformers with fixing screws, input cables to amplifiers and connection details.



## Operation

### Single Channel Amplifier Type 808 and 811

When amplifiers have been installed and lined up by the Installation Engineer, controls used by the Projectionist are as follows:—

**THE FILM/DISC/MICROPHONE** switch is mounted with its spindle projecting through the sloping metal panel at the top of the unit, to the left of the centrally mounted monitor speaker. The Escutcheon is marked F-D-M, and by turning the switch to one or other of these markings, the operator can select any one of three sound sources, Sound-on-Film, non-sync or microphone.

**THE MAIN VOLUME CONTROL** to the right of the Monitor Speaker on the same sloping panel, has an escutcheon marked from 0-20. Click stops allow the fader to be set accurately at any of the marked positions.

### GK 18/36 watt Dual Amplifier Type 810 and 811

In these installations each amplifier has a Film/Disc/Microphone switch and a main volume control. The only other controls used by the projectionist are the "INPUTS" switch and AMPLIFIER "SELECTOR" switch (located on the top face of the back tray on "A" amplifier) and the "CHANGEOVER" and "EXCITER SUPPLY" switches (located on the Changeover switch box, Part No. 814001).

**THE "INPUTS" SWITCH** connects the Sound-on-Film, disc and microphone inputs to either "A" or "B" amplifier. The switch escutcheon is marked "A" or "B" and when one amplifier only is in use the appropriate position should be selected. When both amplifiers are in use (36 watt operation) this switch must be left in the "A" position.

**THE "AMPLIFIER SELECTOR" SWITCH** has three positions "A", "A and B", "B". In "A" or "B" positions the stage loudspeakers are connected to the selected amplifier only. The "A and B" position is used for 36 watt operation, and connects both "A" and "B" amplifier outputs to the stage loudspeakers, at the same time connecting the power amplifier sections of "A" and "B" amplifiers to the pre-amplifier section of "A" amplifier. For this reason, the Film/Disc/

Increase of volume is obtained by rotating the knob in a clockwise direction.

**THE SOUND CHANGEOVER SWITCH** (Type 808 only) located in the wall mounting back tray and operated by the lever projecting from the panel above the fader knob, selects the exciter lamp in No. 1 or No. 2 projector in the "L" and "R" positions respectively, and connects a small pre-heat voltage to the exciter lamp in the unselected or idle projector. This pre-heat voltage maintains the unused exciter lamp filament at a dull red heat, allowing the lamp to attain full brilliancy immediately it is switched into circuit thus avoiding a time lag in sound on changeovers. Remote operation is provided by a mechanically coupled Remote Changeover box (Part No. 522150) similarly designated "L" and "R".

Microphone switch and Main Volume Control on "A" amplifier control both "A" and "B" amplifiers in the 36 watt condition.

**THE "EXCITER SUPPLY" SWITCH** on the Changeover switch box (Part No. 814001) should be switched to the appropriate "A.AMP" or "B.AMP" position when one amplifier only is in use. When both amplifiers are in operation (36 watt condition) the exciter supply may be obtained from either position.

**THE "CHANGEOVER" SWITCH** selects the exciter lamp in No. 1 or No. 2 projector in the "L" and "R" positions respectively, and connects a small pre-heat voltage to the exciter lamp in the unselected or idle projector. Remote operation is provided by a mechanically coupled remote Changeover box (Part No. 522150) similarly designated "L" and "R".

**Note:** When GK 18/36 watt amplifier equipment is used in conjunction with GK 37 Projection equipment, the Changeover switch box (Part No. 814001) is replaced by a Type 1613 "EXCITER SUPPLY" switch, as sound changeover is carried out from each GK 37 projector stand. This switch serves the same purpose as the "Exciter Supply" switch in the 814001 switch box and the same remarks apply.

## General

Where an 18 watt amplifier has not been used for a month or more, or immediately on installation, the HT fuses F1, F2, and F3 should be removed and the amplifier switched on for 30 minutes to re-form the Electrolytic capacitors. Replace fuses.

Should hum develop on the amplifier in both Film and Disc positions when it has been installed for some length of time check the fuses (F1, F2, F3, and F4) protecting the electrolytic capacitors. Replace as necessary, but should the fuse blow again the capacitor

concerned is faulty and should be replaced.

If one amplifier only of a dual installation is normally in use, the INPUT and AMPLIFIER SELECTOR switches should be alternated between the "A" and "B" positions once a week, at the change of the programme or at some other time which will ensure that this is done each week without fail. In this way, both units will get regular use, and the electrolytic capacitors will not need to be reformed.

## Cleaning Faders and Switches

The stud contacts of faders and switches should be cleaned periodically, NEVER LESS THAN ONCE EVERY THREE MONTHS. Since atmospheric conditions have an

effect on the contacts, the actual frequency of cleaning must be dictated by experience.

### Faders and stud-contact switches

After dusting inside the case and cover, the following cleaning procedure should be followed:—

1. Wipe the stud faces carefully with a clean rag of fine linen, moistened with pure Benzine, and then with a similar rag dry.
2. Carefully lift the contact brushes just enough to permit the insertion of a clean piece of paper between the brushes and the contact studs. Oscillate the brushes backwards and forwards over the paper to clean the contact faces.
3. Clean the collector ring with Benzine, then clean the faces between the collector shoe and the ring with paper as above.

4. Re-lubricate the stud faces and contact ring face with a very small amount of best quality clock-oil, using a camel hair brush.
5. Clean out any surplus oil or dust before replacing cover.

**Note I:** On no account should emery paper or any abrasive be used for cleaning contacts.

**Note II:** Do not use Carbon Tetrachloride (or "Thaw-pit") as a solvent in place of Benzine, because of impurities found in commercial grades.

**Note III:** When installing or replacing faders or switch-boxes, do not remove fader dust covers whilst connecting leads or soldering adjacent components, as dirt and flux must not be allowed to fall on the contact faces.

### Wafer Switches

With switches of this type, it is not generally possible to wipe the contact surfaces, but a similar cleaning method to the above should be employed. After dusting as above:—

1. Wash dirt away from contact surfaces with Benzine applied with a soft brush.

APPLY ALWAYS THE LIGHTEST POSSIBLE COVERING.

2. Lubricate as above, with clock-oil or any lubricant which fulfils the following conditions:—

- (a) It is non-volatile.
- (b) It is "non-gumming."

The manufacturers of certain of these switches recommend lanoline or petroleum jelly as a lubricant.



## SPARE PARTS LIST

When ordering Spare Parts from this List, always give as much information as possible. In addition to the number of the part to be replaced, quote its name, with the type and serial numbers of the unit in which it is fitted.

**IMPORTANT:** The Part Number must always be quoted.

Bei der Bestellung von Ersatzteilen sollte eine eingehende Beschreibung beigefügt werden. Ausser der Nummer des Teils, das ersetzt werden soll, sollte seine Benennung sowie die Typen- und Seriennummern des Gerätes angegeben werden, in den das Teil eingebaut werden soll.

**WICHTIG:** Die Listenbezeichnung des Teils muss auf jeden fall angegeben werden.

Quand vous commandez des pièces a l'aide de cette liste veuillez donner le plus d'information possible. En plus du numéro de la pièce, veuillez indiquer son nom ainsi que le type et numéro de la machine à laquelle elle est destinée.

**IMPORTANT:** Le numéro de la pièce doit toujours être donné.

Cuando se hace un pedido de piezas de recambio se debe hacer lo mas detallado posible. Aparte del número de la parte que se reemplaza, indicar su nombre, con los números de tipo y serie de la sección donde van ajustados.

**IMPORTANTE:** El número de la parte siempre debe indicarse.

Bij bestelling van onderdelen van deze lijst verzoeken wij U altijd zoveel mogelijk bijzonderheden te verstrekken. Afgezien van het nummer van het te vervangen onderdeel verzoeken wij U de naam ervan op te geven alsmede het type en de serie nummers van de machines, waarin e.e.a. gemonteerd moet worden.

**BELANGRIJK:** Het nummer van het onderdeel moet altijd opgegeven worden.

Per ordinare pezzi di ricambio da questo elenco, date sempre i più dettagli possibile. Oltre il numero del pezzo che deve essere cambiato, date anche il nome, il modello ed il numero di serie del unita nella quale è montato.

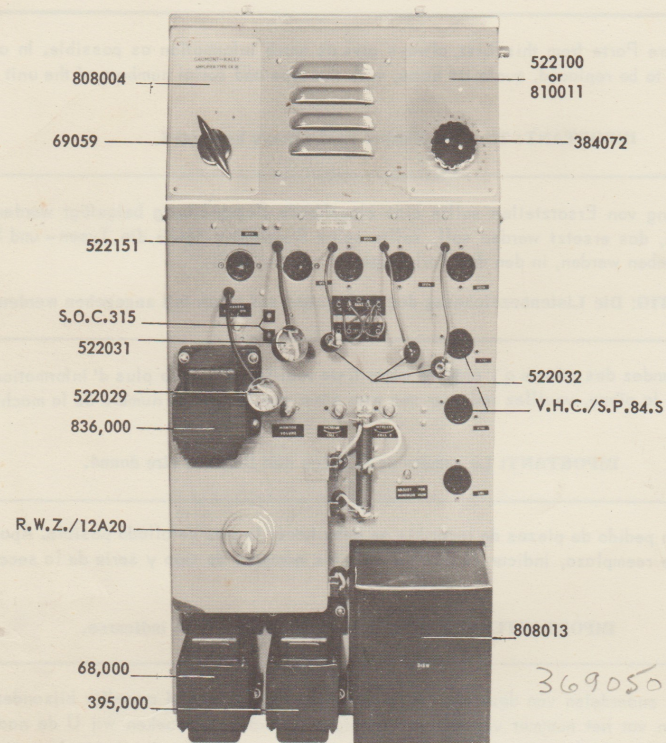
**AVVISO IMPORTANTE:** Il numero del pezzo di ricambio deve essere sempre quotato.

Quando se fizer uma encomenda de peças sobressalentes desta lista, dar sempre todos os detalhes possíveis. Além do número da peça a substituir, indicar o seu nom, bem como tipo e número da máquina onde a mesma deve ser ajustada.

**IMPORTANTE:** O número da peça sempre deve indicar-se.



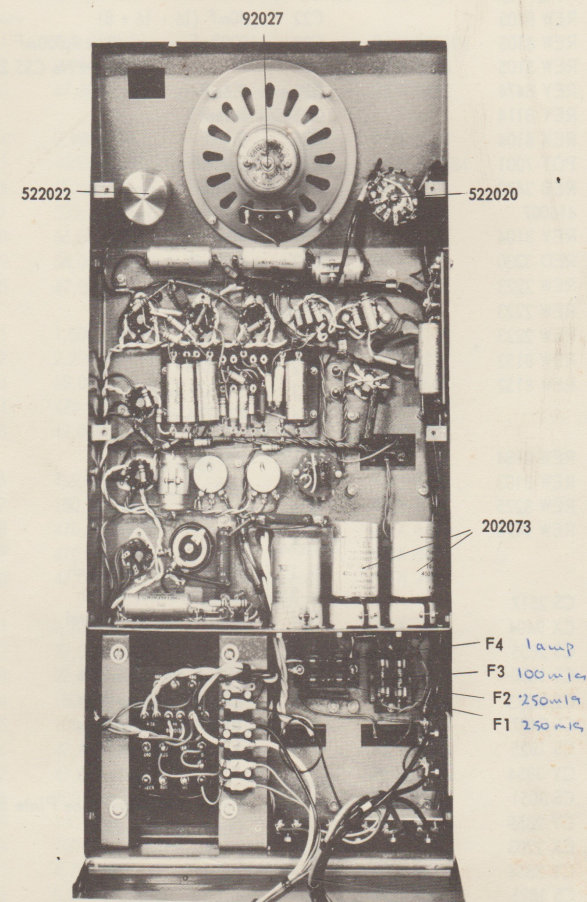
## Plate 1



CHASSIS (Part No 808003) FRONT COVER REMOVED.

Part No	Description	No. Off	
69,059	Switch knob	1	(Secured by 2BA 3/8in Cheesehead screw)
384,072	Volume control knob	1	
522,029	Grid connector	1	
522,031	Grid connector	1	
522,032	Grid connector	3	
522,151	Valve holder	2	
522,100	Escutcheon	1	(Type 808 only)
or			
810,011	Escutcheon	1	(Types 810 or 811)
808,004	Escutcheon	1	
SOC 315	Output test sockets	2	
VHC/ Sp 8 us	Valveholder	6	

## Plate 2



CHASSIS (Part No 808003) SCREEN REMOVED.



# ELECTRICAL COMPONENTS

## C 808,003

Note: C23 was type CE23CE, now obsolete and replaced by type CE101C which is physically smaller. A Sorbo rubber packing strip is required.

Circuit Ref.	Description	Part No.
<b>Resistors</b>		
R 1	100,000 ohm.	REY 100104
R 2	2,200,000 ohm.	REW 8225
R 3	47,000 ohm. (In grid connector Part No 522029)	REW 9473
R 4	2,200 ohm.	REX 8222
R 5	100,000 ohm.	REX 100104
R 6	68,000 ohm.	REX 8683
R 7	330,000 ohm.	REY 8334
R 8	56,000 ohm.	REY 8563
R 9	56,000 ohm.	REY 8563
R10	47,000 ohm. (In grid connector Part No 522031)	REW 9473
R11	1,000,000 ohm.	REW 8105
R12	2,200 ohm.	REX 8222
R13	68,000 ohm.	REX 8683
R14	470,000 ohm.	REX 8474
R15	47,000 ohm. (In grid connector Part No 522032)	REW 9473
R16	1,600 ohm.	REY 8162
R17	150,000 ohm.	REX 8154
R18	470,000 ohm.	REX 8474
R19	470,000 ohm.	REX 8474
R20	47,000 ohm. (In grid connector Part No 522032)	REW 9473
R21	2,200 ohm.	REX 8222
R22	22,000 ohm.	REX 8223
R23	22,000 ohm.	REX 8223
R24	100,000 ohm.	REX 8104
R25	100,000 ohm.	REX 8104
R26	47,000 ohm.	REW 9473
R27	47,000 ohm.	REW 9473
R28	200 ohm.	REJ 3201
R29	100 ohm.	REX 8101
R30	100 ohm.	REX 8101
R31	4,700 ohm.	REY 8472
R32	8,000 ohm.	REG 3802
R33	2,000 ohm.	RED 3202
R34	220,000 ohm.	REX 8224
R35	56,000 ohm.	REY 8563
R36	6,800 ohm.	REX 8682
R37	1,000,000 ohm. potentiometer	POT 7003
R38	1,000,000 ohm. potentiometer	POT 7003
R39	1,000,000 ohm.	REW 8105

Circuit Ref.	Description	Part No.
R40	1,000,000 ohm.	REW 8105
R41	1,000,000 ohm.	REW 8105
R42	1,000,000 ohm.	REW 8105
R43	470,000 ohm.	REY 8474
R44	110,000 ohm.	REY 8114
R45	100,000 ohm.	REX 8104
R46	50 ohm. potentiometer	POT 7001
R47	47 ohm.	REB 3470
R49	2 ohm.	416007
R50	100,000 ohm.	REY 8104
R51	20 ohm.	RED 3200
R52	22,000 ohm.	REW 2223
R53	22,000 ohm.	REW 2223
R54	22,000 ohm.	REW 2223
R55	1,500 ohm.	REW 8152
R56	1,500 ohm.	REW 8152
R57-R65	On monitor volume control S.4 (Supplied as complete assembly only)	
R67	180,000 ohm.	REW 8184
R68	10,000 ohm.	REW 8103
R69	2,200,000 ohm.	REW 8225
R71	47,000 ohm. (In grid connector Part No 522032)	REW 9473

<b>Capacitors</b>		
C 1	0.01mF	CS 2517
C 2	40 pF	CX 9404
C 3	0.02mF	CS 2855
C 4	0.5mF	CS 1850
C 5	120pF	CZ 4053
C 6	50mF	CS 2497
C 7	0.25mF	CS 1825
C 8	0.01mF	CY 3854
C 9	0.05mF	CS 3051
C10	0.02mF	CY 2855
C11	0.0003mF	CX 2203
C12	0.01mF	CY 3854
C13	0.25mF	CS 1825
C14	0.1mF	CX 1822
C15	0.1mF	CX 1822
C16	50mF	CS 2497
C17	0.05mF	CY 3084
C18	560pF	CZ 4056
C20	24 (16 + 8F)	
C21	16mF	202073

Circuit Ref.	Description	Part No.
C22	40mF (16 + 16 + 8)	202073
C23	2000mF (Was 1,000mF Part No CSS 2350)	CS 3612
C24	0.5mF	CS 1850
C25	0.1mF	CS 3121
C26	0.1mF	CS 3121
C27	0.01mF	CS 2517
C28	0.01mF	CS 2517
C31	0.01mF	CS 3854
C32	40pF	CX 9404
C33	0.25mF	CS 1826
C34	0.5mF	CS 1850
<b>Valves</b>		
V 1	EF 37A	
V 2	EF 37A	
V 3	EF 37A or 6J7	
V 4	EF 37A or 6J7	
V 5	KT 66 or 6L6G	
V 6	KT 66 or 6L6G	
V 7	U52 or 5U4G	
V 8	EF 37A or 6J7	
<b>Switches</b>		
S 1	Film/Disc/Mic switch	522,020
S 3	Stage speaker switch	522,030
S 4	Monitor volume control	222,006
<b>Fuses</b>		
F 1	250mA cartridge fuse	FCA 0025
F 2	250mA cartridge fuse	FCA 0025
F 3	100mA cartridge fuse	FCA 0010
F 4	1 Amp cartridge fuse	FCA 0100
<b>General</b>		
T 1	Mains transformer (See Plate 3)	808,013 +
T 2	Output transformer	836,000
L 1	Choke	68,000
L 2	Choke	395,000
W 1	Rectifier bridge	RWZ 12A20
LS	Monitor Loudspeaker	92,027
VR1	Main Volume Control	522,022 250K

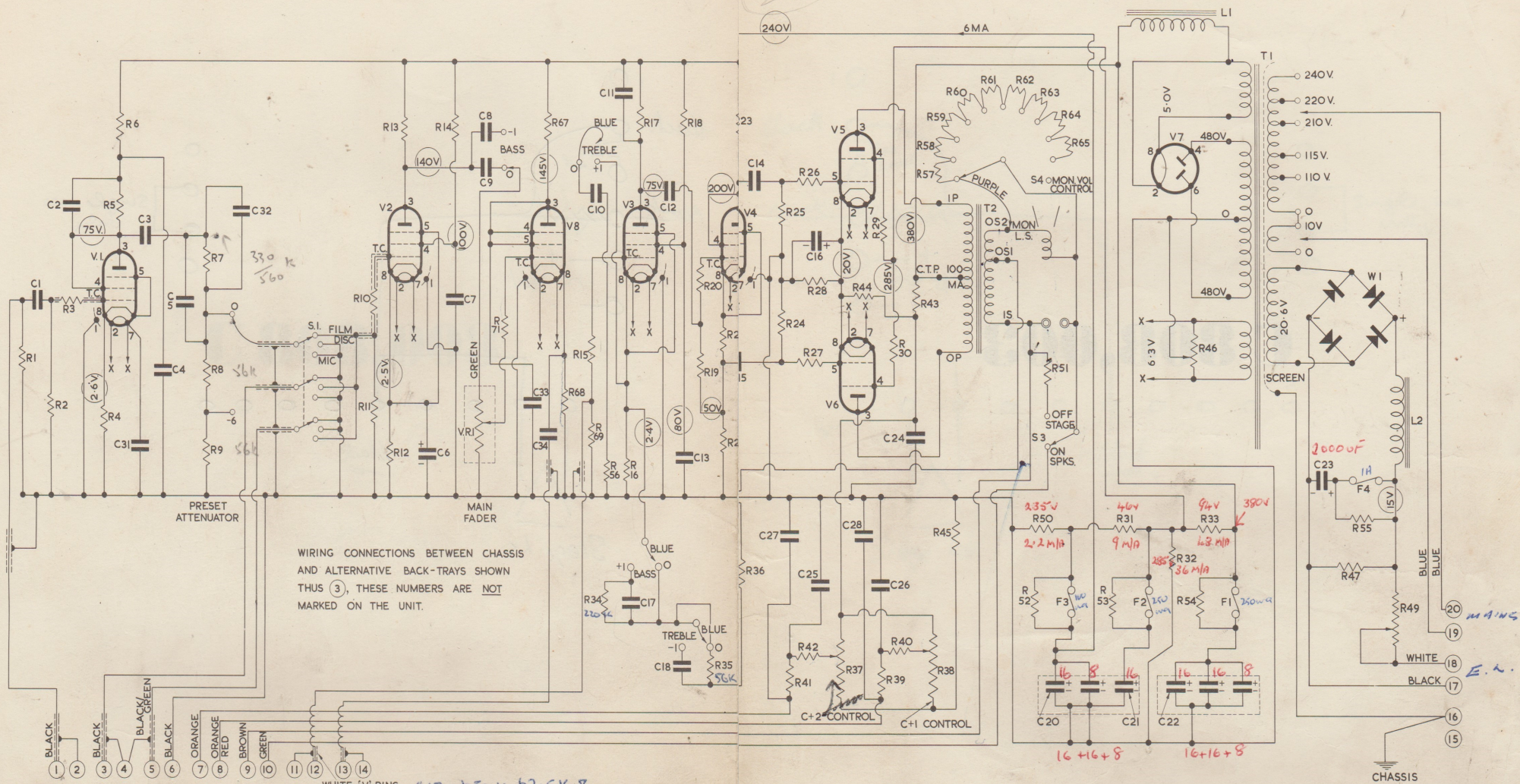
NOTE:- The value of R.7. has now been changed to 560,000 ohms, (Ref. REY. 8564). This change is effective on units manufactured since January 1958, and it is recommended that this modification be incorporated on existing dual amplifier installations.



**ELECTRICAL COMPONENTS**  
**C 808,003**

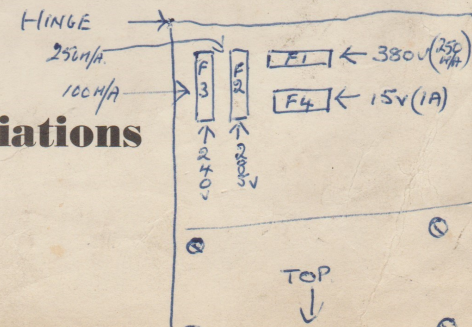
**C 808,003**





**C 808,003 Circuit of 18 Watt Amplifiers 808, 810, 811 and variations**

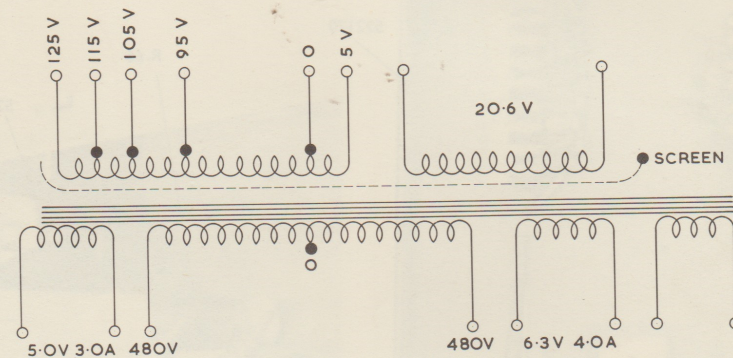
C17 at 50k 62.5K 2R  
at 10k 62.5K 2R.  
C18 at 50k 5.5m 2  
10k 62.5K 2R



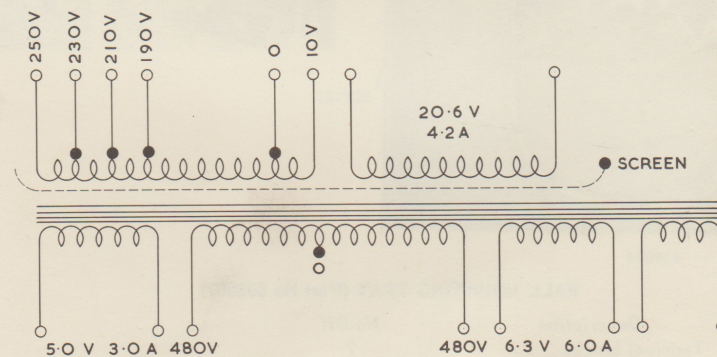


# Plate 3

## MAINS TRANSFORMER CONNECTIONS FOR EARLY PRODUCTIONS



ORIGINAL 110V MAINS TRANSFORMER  
PT NOS 369002 OR 415050

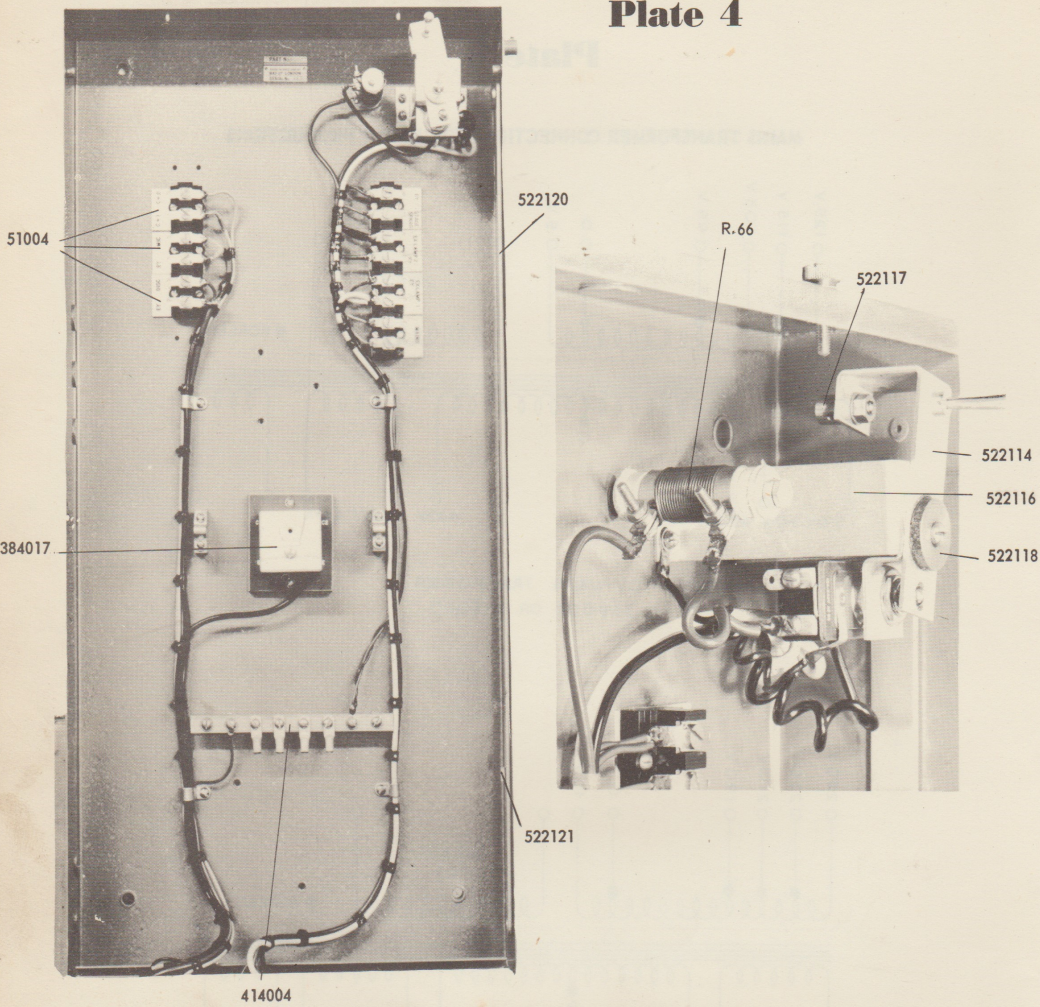


ORIGINAL 240V MAINS TRANSFORMER  
PT NOS 369001 OR 369050



522169

Plate 4



WALL MOUNTING TRAY (Part No 808007)

Part No	Description	No. Off
51,004	Terminal blocks	7
384,017	Screened connecting block	1
414,004	Earth bus assembly	1
522,120	Stay for chassis	1
522,121	Spring clip for stay	1
522,169	Chassis securing screws	2
GRU/28	4BA Allen set screw	1

(Securing remote cable outer casing)

Plate 5

CHANGEOVER SWITCH FOR TYPE 808 AMPLIFIERS

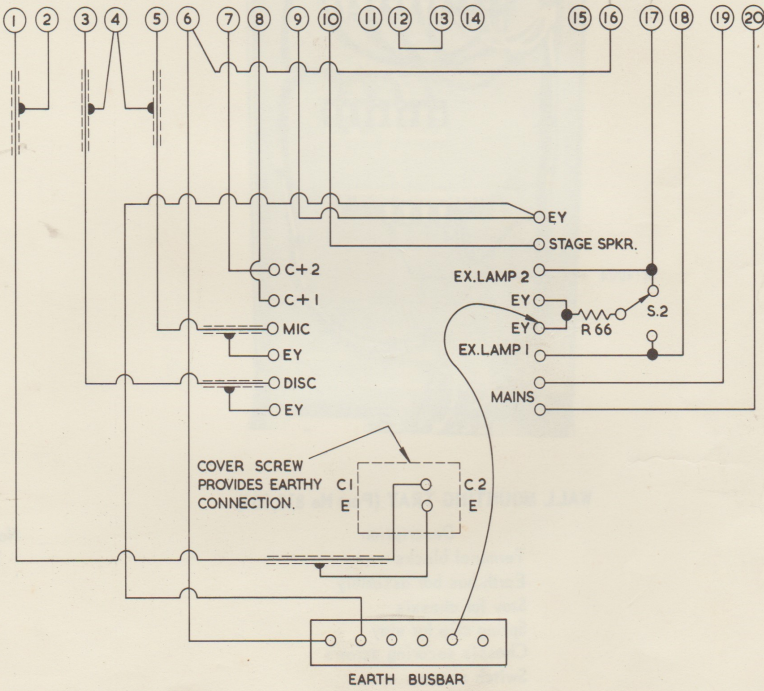
Part No	Description	No. Off
522,114	Bearing plate assembly	1
522,116	Switch bracket assembly	1*
522,117	Barrel	1
522,118	Spigot	1
SWA 81057	Switch D.P.D.T.	1
REE 20 P5	0.5 ohm Resistor (R 66)	1
GRU 8/23	4BA Allen set screw	1

(Was M501068 on earlier productions)

(Securing remote inner cable).

\* ALTHOUGH THE CURRENT TYPE OF SWITCH (SWA 81057) WILL REPLACE THE EARLIER SWITCH (M 501068) SHOULD A REPLACEMENT BRACKET ASSEMBLY (Part No 522116) BE REQUIRED THIS ITEM HAS BEEN-RE-DESIGNED, AND WILL NOW ACCOMMODATE THE NEW TYPE SWITCH ONLY.

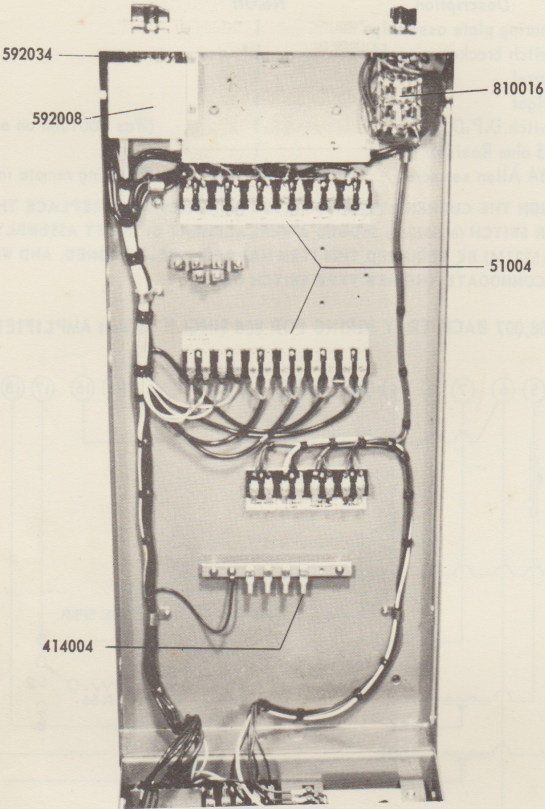
C808,007 BACK TRAY WIRING FOR 808 SINGLE 18 Watt AMPLIFIER



WIRING CONNECTIONS TO 808003 CHASSIS SHOWN THUS ③  
THESE NUMBERS ARE NOT MARKED ON THE UNIT.



Plate 6

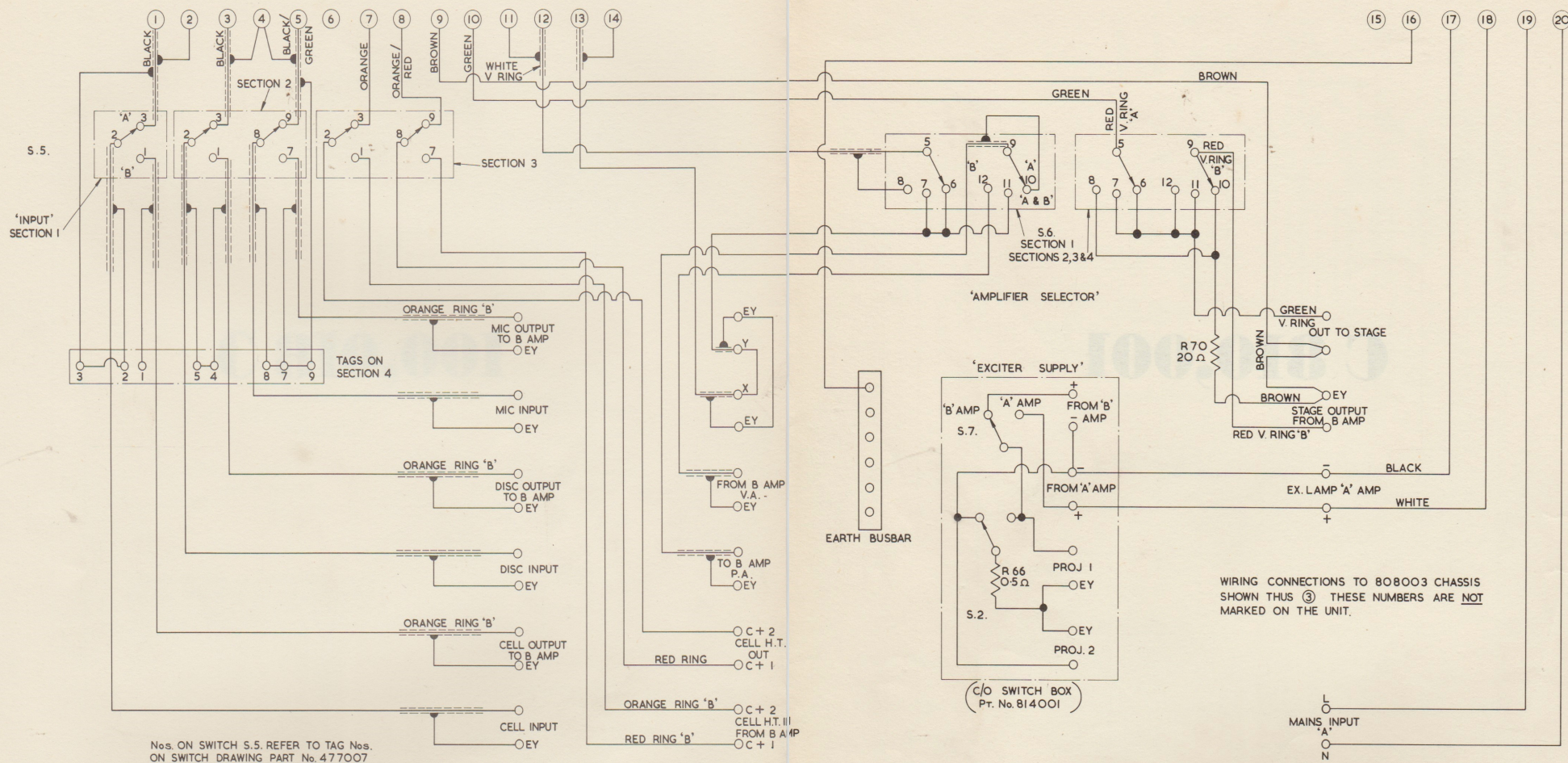


WALL MOUNTING TRAY (Part No 810,001)

Part No	Description	No.Off
51,004	Terminal blocks	16
414,004	Earth bus bar assembly	1
522,120	Stay for chassis	1
522,121	Spring clip for stay	1
522,169	Chassis securing screws	2
592,008	Switch screen	1

C 810,001

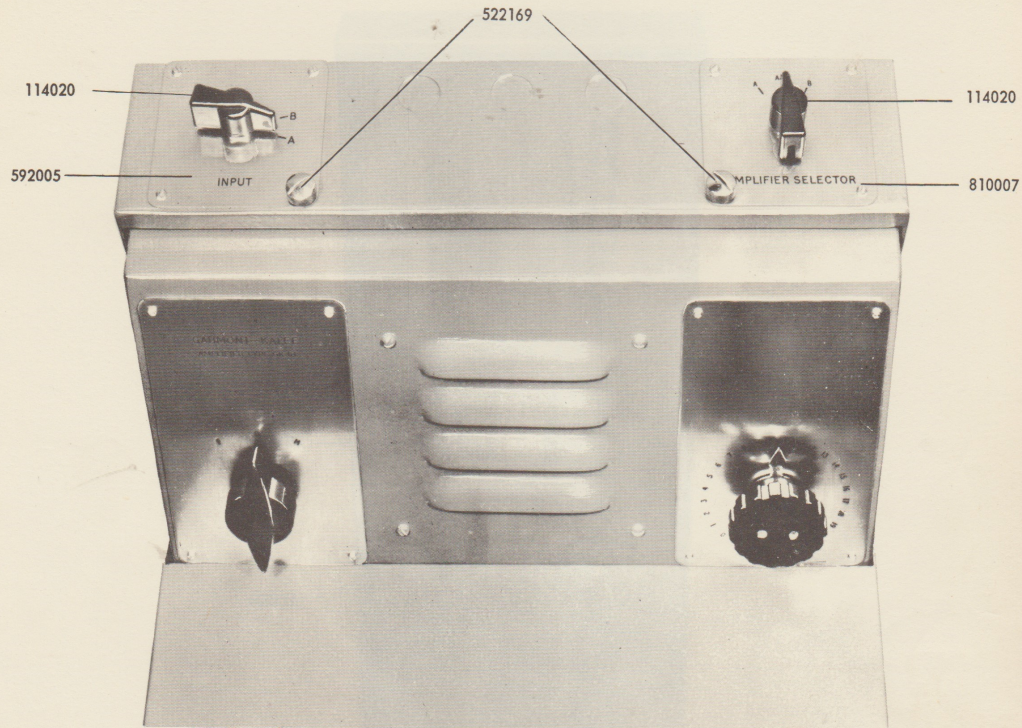




**C 810,001 Back Tray Wiring for "A" Amplifier of GK 18/36 Watt Installation**



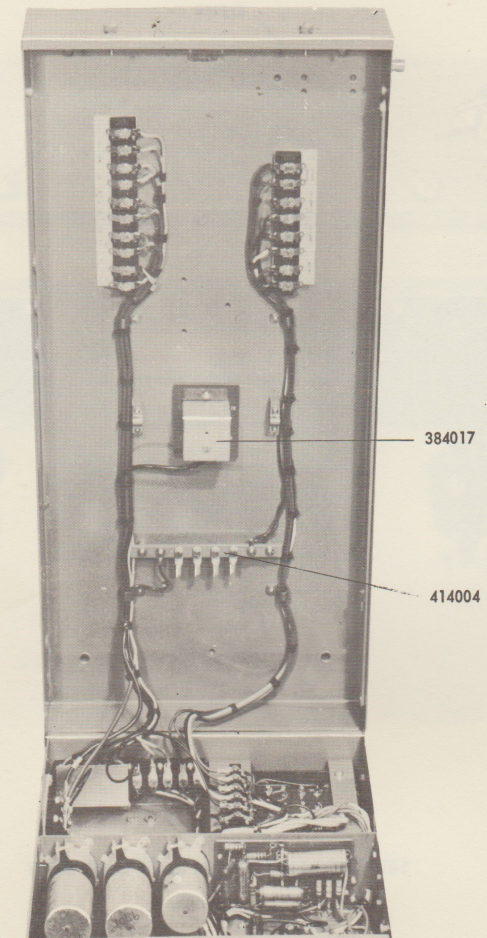
# Plate 7



## SELECTOR SWITCHES 36 WATT EQUIPMENT

Part No	Description	No. Off
114,020	Switch knob	2
592,005	Escutcheon	1
810,007	Escutcheon	1

# Plate 8

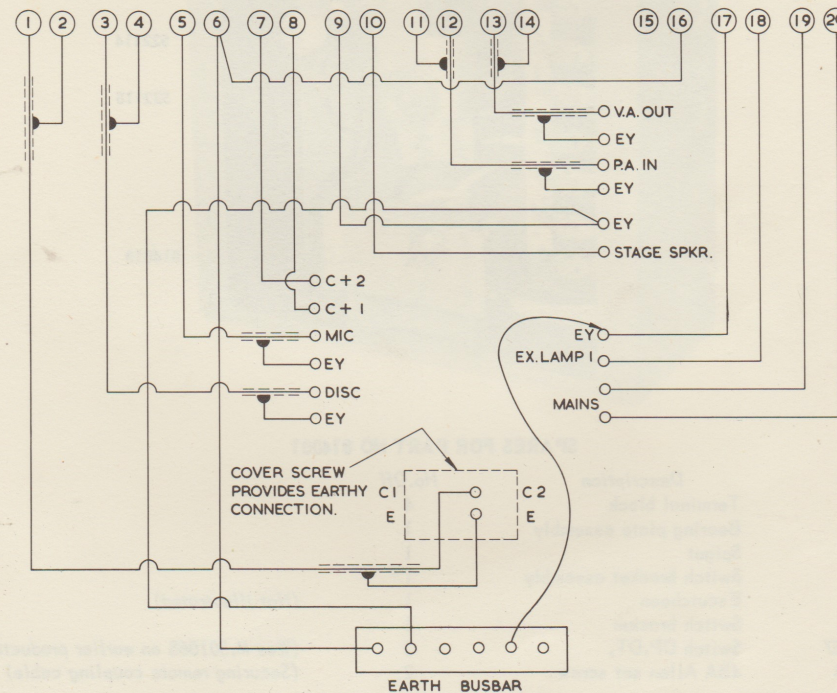




## WALL MOUNTING TRAY (Part No 811,001)

Part No	Description	No. Off
51,004	Terminal blocks	9
384,017	Screened terminal connection	1
522,120	Stay for chassis	1
522,121	Spring clip for stay	1
522,169	Chassis securing screws	2

## C811,001 BACK TRAY WIRING FOR 'B' AMPLIFIER OF GK 18/36 Watt INSTALLATION



WIRING CONNECTIONS TO 808-003 CHASSIS SHOWN THUS (3)  
 THESE NUMBERS ARE NOT MARKED ON THE UNIT.

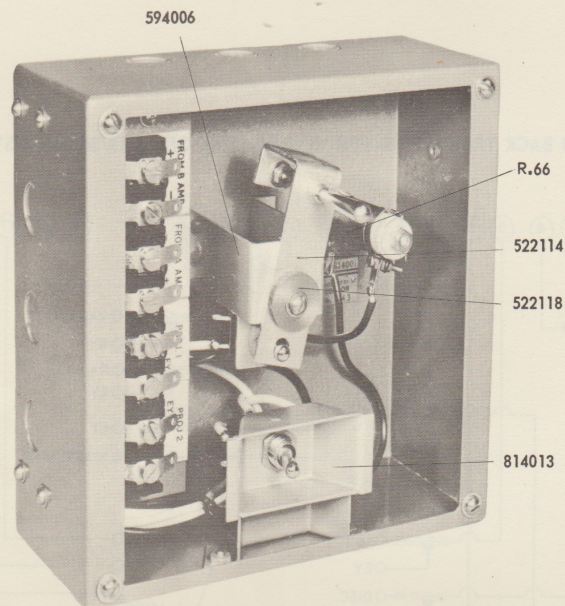


## Plate 9

### TYPE 814 SOUND CHANGE-OVER UNIT

NOTE:- Type 814 (Part No 814000) Sound change-over unit comprises the following two units:-

Sound change-over and exciter circuit selector Part No 814001  
Remote sound change-over unit, Part No 522150 (See Plate 9)

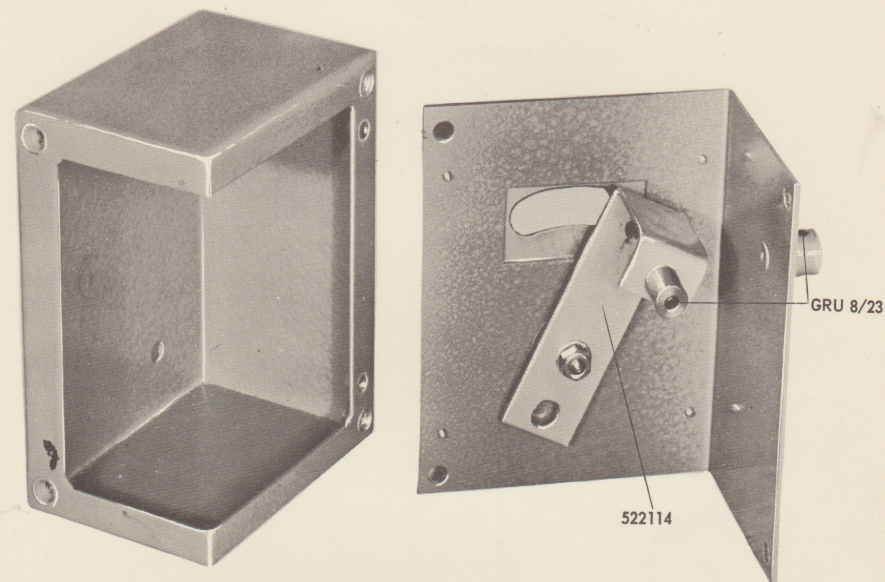


### SPARES FOR PART NO 814001

Part No	Description	No. Off	
51004	Terminal block	4	
522,114	Bearing plate assembly	1	
522,118	Spigot	1	
594,006	Switch bracket assembly	1*	
814,004	Escutcheon	1	(Not illustrated)
814,013	Switch bracket	1	
SWA 81057	Switch DP,DT.	2	(Was M.501068 on earlier productions)
GRU 8/23	4BA Allen set screw	2	(Securing remote coupling cable)

\* ALTHOUGH THE CURRENT TYPE OF SWITCH (SWA 81057) WILL REPLACE THE EARLIER SWITCH (M 501068), SHOULD A REPLACEMENT BRACKET ASSEMBLY (Part No 594,006) BE REQUIRED THIS ITEM HAS BEEN RE-DESIGNED, AND WILL NOW ACCOMMODATE THE NEW TYPE SWITCH ONLY.

## Plate 10



### REMOTE CHANGE-OVER UNIT (Part No 522150)

Note:- This unit is supplied complete with cable and outer casing as part of the Type 808 Amplifier, or as part of the Type 814 change-over unit with the GK 18/36 watt equipment.

Part No	Description	No. Off	
522,114	Bearing plate assembly	1	
522,130	Escutcheon	1	
GRU 8/23	4BA Allen set screw	2	(For remote coupling cable)
CGC 2211	Outer casing for cable	*	
QPR 6816	Inner cable	*	

\* When ordering these items for replacement purposes please state length required. The normal length supplied with the complete unit are 6ft of outer casing (C.G.C. 2211) and 6ft 9in of inner cable (QPR 6816)