

PROJECTORS ARC LAMPS RECTIFIERS LENSES

# Everything

ANAMORPHIC LENSES SOUND EQUIPMENT SCREENS

FOR THE **Cinema**

CARBONS FLOOR COVERINGS ASH TRAYS TORCHES

AND **Theatre**

STAGE EQUIPMENT DRAPERIES SEATING LIGHTING

# GB-KALEE

May  
1955  
MB/20



# Introducing



new

low-priced

## GAUMONT-KALEE SEATS

Designed to withstand the **ROUGHEST** treatment



THE BECONTREE



THE MODIFIED SHIRWOOD



THE BECWOOD JUNIOR

Please write for illustrated leaflet  
**G.B.-KALEE LTD.**, Mortimer House,  
37-41 Mortimer St., London, W.1. MUSEUM 5432  
A Member of the British Optical  
and Precision Engineers' Group

Now, Gaumont-Kalee introduce three strongly constructed chairs at amazingly low prices. The Modified Shirwood, the Becwood Junior and the Becontree have been specially designed to meet the demand for inexpensive seating in cinemas where the chairs are liable to receive rough treatment. Attractively finished to harmonise with every style of decor, they are available in a choice of seat bottoms and backs to match the degree of comfort required in relation to admission prices.



EVERYTHING FOR THE CINEMA AND THEATRE

- ★ Choice of pre-formed laminated plywood back (as supplied by G.B.-Kalee for the Forces Cinema) or fully upholstered 14" deep back.
- ★ Choice of new design seat bottom with 12 stout gauge springs or standard seat bottom with 16 springs.
- ★ Range of hard-wearing covering materials.
- ★ Latest design 'Box' pattern fine cast standards.
- ★ Hire Purchase terms available.

Everything for the **G.B.-KALEE** Cinema and Theatre

When your patrons have settled down in their seats, their enjoyment will depend, in no small degree, upon your screen. Those seated at the side as well as the centre must see a brilliant picture with perfect reproduction, if you are to use those 'Queuing' signs. That is why we have devoted a section of this small booklet to screens. The type, size, and positioning of the screen is today a problem for the technician, and in this direction the G.B.-Kalee Planning Design Division is organised to help you.

It is said that 'Variety is the spice of life' and a varied programme with films of two or more aspect-ratios will necessitate a Magnascope Screen Frame, if they are to be presented with all the old Showmanship. You will find details of this equipment on pages 8 and 9.

When your patrons are seated, if they aren't comfortable they will not become 'regulars,' no matter how good the films and the presentation. You can make sure of their comfort for a very small weekly sum. The chairs shown on the opposite page are only three of the largest range offered by any manufacturer of Cinema Seats. Their comfort and hard-wearing qualities are renowned and they can all be obtained on very attractive Hire Purchase terms. Write or phone the manager of your nearest G.B.-Kalee Branch, they are listed on the inside back cover of this book.

**G.B.-KALEE LTD.**



A member of the British Optical & Precision Engineers' Group



## CINEMA BLACK

The perfect coating for Announcement Slides

2-oz. Bottles ... .. 1/6

## CONDENSER GLASSES

4½" Plano Convex ... .. each 27/-

6" × 9" Plano Convex ... .. each 60/-

## COWAN MIRROR PROTECTOR

Prevents pitting of mirror. A British invention consisting of a shaped shield made of specially annealed glass.

10" ... each 28/- 10¼" ... each 30/-

12" ... each 39/6 13½" and 14" each 45/-

## CURTAINS

Always obtain a G.B-Kalee quotation. We are actual manufacturers and our Curtain Dept. is staffed by men who are acknowledged to be foremost authorities upon stage furnishing and design. Quotations and schemes supplied on request.

## CURTAIN CONTROLLERS

Quotations gladly submitted for the correct type of curtain controllers for use with the tracks listed on the following page. All types can be supplied—wall or floor mounting, manually operated and automatic electric. The latter can be fitted with direct switch control giving "open" and "closed" positions only or push button permitting in addition, the stopping of curtains as desired

## CURTAIN TRACKS

For Front Curtains, Screen Curtains and Stage Settings

Constructed of tubular steel complete with pulleys, bobbins, universal fixing clips, overlap clips, master bobbins, threaded with sash cord for hand operation or flexible steel wire rope for hand winch or power operation.

### EXTRA LIGHT TUBULAR

10 ft. ...	£6 13 6	14 ft. ...	£7 1 6
11 ft. ...	£6 15 6	15 ft. ...	£7 3 0
12 ft. ...	£6 17 0	16 ft. ...	£7 4 0
13 ft. ...	£7 0 0	17 ft. ...	£7 5 0

### LIGHT TUBULAR

15 ft. ...	£9 16 6	26 ft. ...	£13 9 6
16 ft. ...	£10 3 0	27 ft. ...	£14 2 0
17 ft. ...	£10 9 6	28 ft. ...	£14 15 0
18 ft. ...	£10 16 0	29 ft. ...	£15 7 6
19 ft. ...	£11 3 0	30 ft. ...	£16 0 0
20 ft. ...	£11 9 9	31 ft. ...	£16 13 6
21 ft. ...	£11 16 0	32 ft. ...	£17 5 6
22 ft. ...	£12 3 0	33 ft. ...	£17 18 0
23 ft. ...	£12 9 6	34 ft. ...	£18 10 6
24 ft. ...	£12 16 0	35 ft. ...	£19 3 6
25 ft. ...	£13 3 0		

### HEAVY TUBULAR

36 ft. ...	£21 15 6	46 ft. ...	£26 3 6
37 ft. ...	£22 4 6	47 ft. ...	£26 12 0
38 ft. ...	£22 13 0	48 ft. ...	£27 1 0
39 ft. ...	£23 2 0	49 ft. ...	£27 10 0
40 ft. ...	£23 10 6	50 ft. ...	£27 19 0
41 ft. ...	£23 19 6	51 ft. ...	£28 7 6
42 ft. ...	£24 8 6	52 ft. ...	£28 16 6
43 ft. ...	£24 17 0	53 ft. ...	£29 5 0
44 ft. ...	£25 6 0	54 ft. ...	£29 13 6
45 ft. ...	£25 14 6	55 ft. ...	£30 2 6



# The Gaumont-Kalee INTEGRATOR



for  
ALL  
films  
produced  
with

**PERSPECTA**  
STEREOPHONIC SOUND

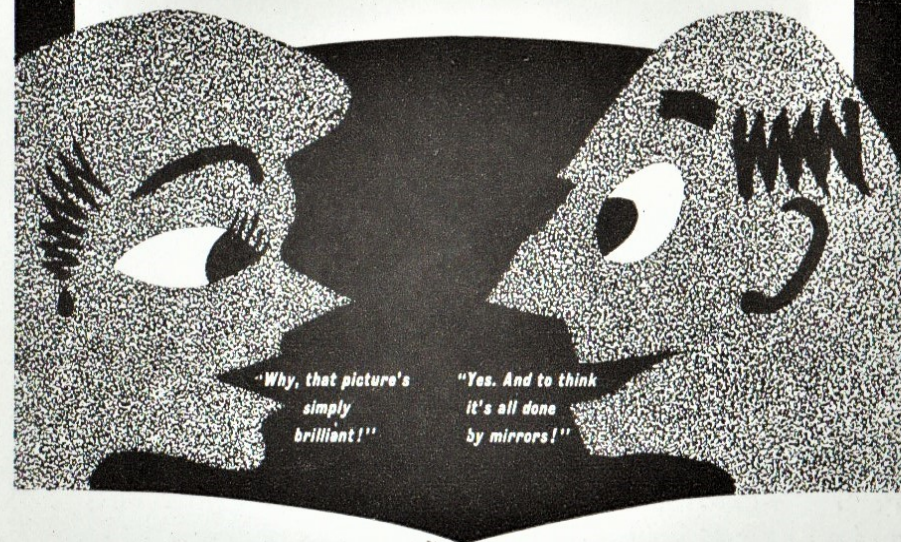


The Perspecta Stereophonic Sound track contains sub-audible control frequencies which are channelled by the Gaumont-Kalee Integrator, an electronic device, through power amplifiers, to the correct loudspeaker situated on the stage.

Consult G.B.-KALEE upon Stereophonic Sound and all Wide Screen Systems.

# The "Miracle Mirror" Screen

Manufactured in Great Britain  
from British Made materials



"Why, that picture's  
simply  
brilliant!"

"Yes. And to think  
it's all done  
by mirrors!"

The screen with the specially designed lenticulated surface to direct the reflected light to the theatres seating area.

Two types are manufactured ; a head-on and a tilted pattern to match exactly the requirements of modest or steep projection rakes. This means optimum brilliance in Every Seat in Every Type of Cinema. Fully descriptive folder with sample piece of screen sent on request.

PRICE 15/- square foot.

Ex Works

EVERYONE sees a brilliant picture



## **"WESTONE" matt white PLASTIC SCREEN**

Made of non-inflammable Poly-vinyl-chloride. The surface is treated to give a pure matt white finish which eliminates all glare.

Perfect reproduction of colour and black and white films. Absolutely clean-cut perforation ensures sparkling reproduction of sound.

The plastic material can be stretched wrinkle free. Surface can be cleaned and eventually resurfaced.

PRICE per square foot Ex Works **4/0**

## **"WESTONE" BEADED SCREEN**

The surface is coated with a countless number of small glass beads giving an extremely high brilliancy. Recommended for cinemas where the angle of projection is not greater than 25° and the angle of observation is less than 40°.

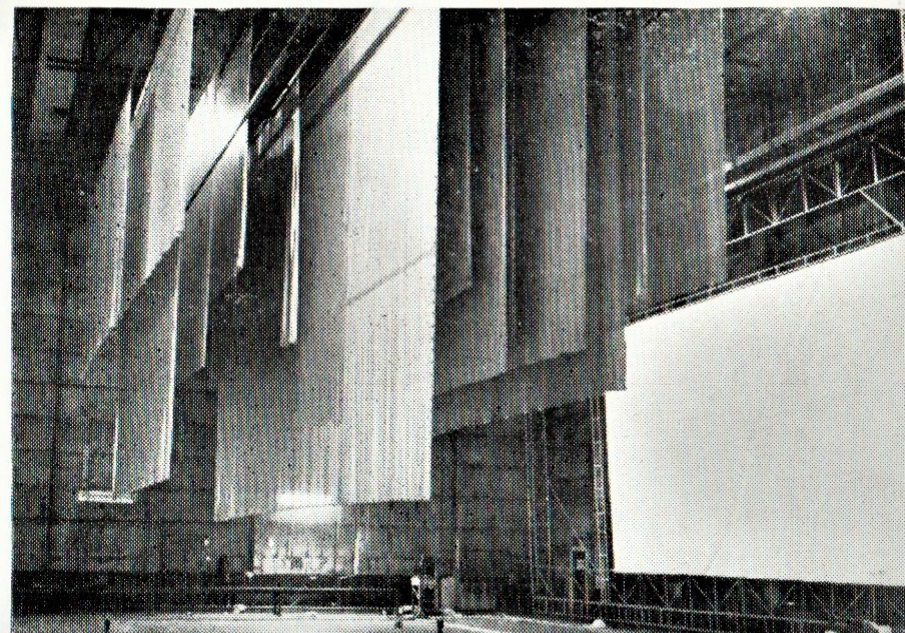
Perfect definition, with correct reproduction of black and white and colour films. Acoustically perfect.

PRICE per square foot Ex Works **6/0**

## **"WESTONE" MATT WHITE SCREEN**

The finest quality matt white perforated screen. Pure white surface is chromatically correct and reproduces black and white and colour film with absolute fidelity. Faithful sound reproduction over the whole frequency range.

PRICE per square foot Ex Works **4/0**



*Seamless Silver Screen drying in the specially heated factory after aluminising.*

## **"WESTONE" Seamless Silver SCREEN** *for all Wide Screen Systems*

A countless number of minute aluminium "mirrors" is deposited by a special process on to a plastic base, so that the maximum amount of light is reflected back to the theatres seating area. Three degrees of gain are manufactured to match the requirements of every type of auditorium.

Reproduction of colour and black and white films is outstanding.

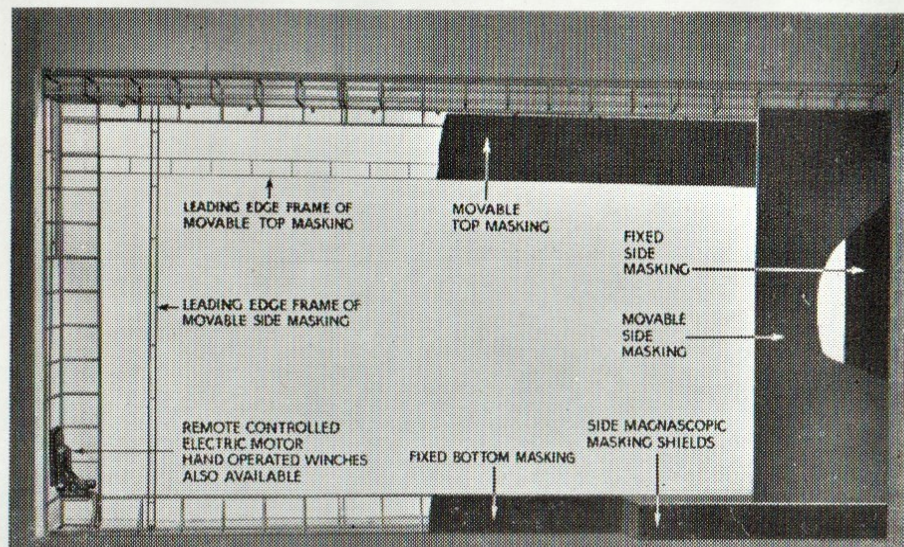
Electronic welding eliminates shadows and distortions. The weld is immensely strong and invisible when the screen is stretched.

PRICE **10/0** square foot  
Ex Works



# G.B-KALEE MAGNASCOPIIC SCREEN FRAME

*for perfect Presentation of all Ratios*



CinemaScope, VistaVision, SuperScope and films of the normal  $4 \times 3$  ratio can *all* be presented in every cinema with the Gaumont-Kalee Magnascope Screen Frame.

The type of installation required is dependent upon the number of picture ratios to be shown, dimensions of screen, and space available on the stage.

The simplest masking movement is where the picture heights or widths are the same; for the former side movement only is necessary, and for the latter top movement only. Where required, the complete equipment can be flown or mounted on trolleys for moving up and down stage. Hand winding is available to effect the move with ease and precision.

## Controllers

Electric controllers can be supplied to obtain multi-positions with up to four or five settings, operated by push buttons situated in the projection box.

Hand operated equipment is fitted with hand winches fixed either to the screen frame or the stage.

## EXAMPLES OF COST

Three examples of Magnascope Screen Frame measuring  $29' \times 11' 6''$  are quoted below. They do not include the screen or the necessary masking. Because each Cinema has individual problems of installation, sight lines etc., prices are always subject to a survey. Our representatives will be pleased to advise you and give every assistance in determining the size of screen, its placing, and the type of masking gear required for your proposed programme.

Magnascope Screen Frame, **Electrically Operated** by push button control from the projection box.

To provide **Two Top** and **Two Side** masking movements, Screen Frame  $29' \times 11' 6''$  ... **£361**

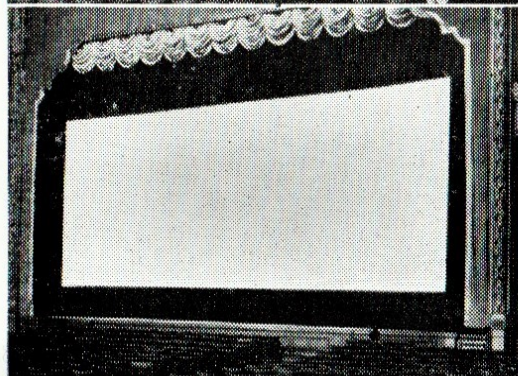
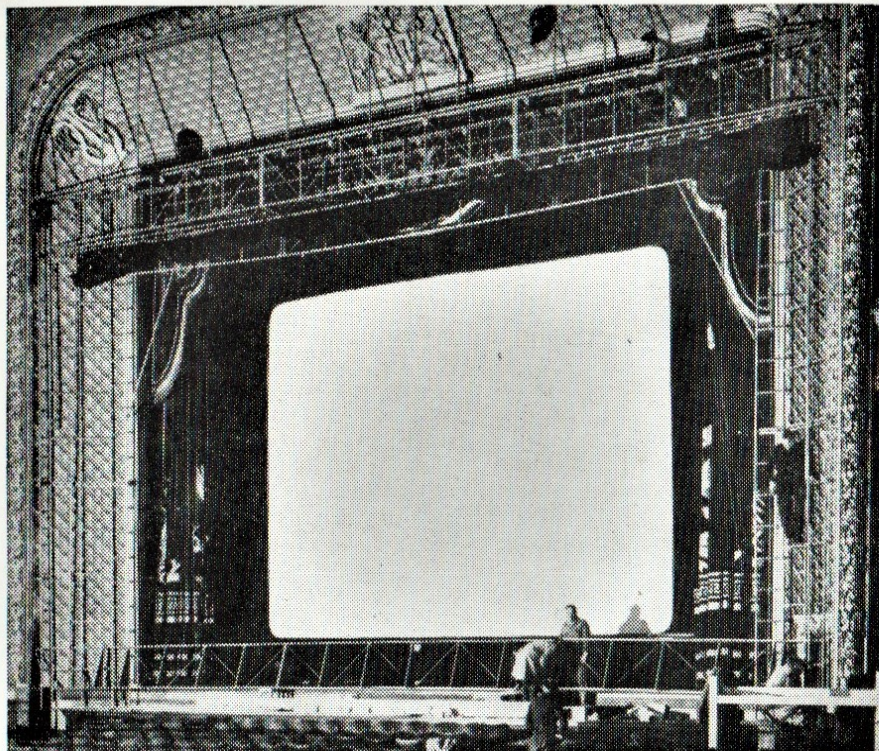
To provide **Side** movement only, or **Top** movement only, Screen Frame  $29' \times 11' 6''$  ... **£226**

Where picture heights are matched, side masking movement only is required. Where picture widths are matched, top movement only is required.

**Hand Operated Equipment** for **Side** movement only or **Top** movement only by hand winch. Screen Frame  $29' \times 11' 6''$  ... **£151**

Where the existing stage is not large enough to accommodate a wide screen a false proscenium can sometimes be installed. A framework of light-weight tubular steel is faced with fibrous plaster, or one of the new building boards, or covered with draperies. A completely new and modern appearance can thus be given to the auditorium at comparatively low cost, and without structural alterations. G.B-Kalee Planning and Design Division is organised to assist exhibitors in every direction and will be pleased to prepare schemes and plans.

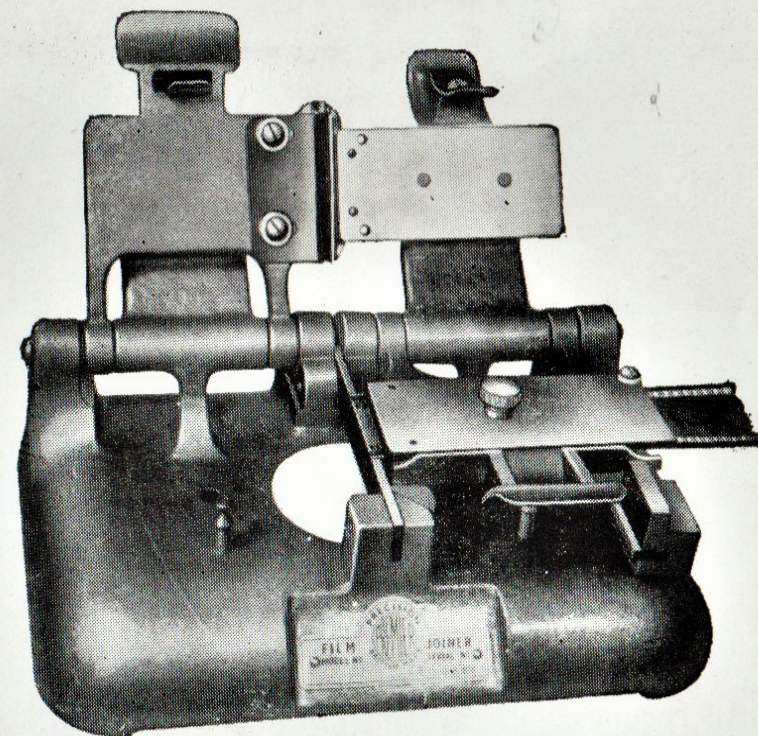




### THE **G.B-KALEE**

Magnascopic  
Screen Frame

Electrically operated magnascopic screen frame for CinemaScope presentation. Fitted with false proscenium front, special lambrequin pelmet and vertical reefing curtains installed at the Plaza Cinema, Swansea.



### De Luxe 35mm FILM JOINER for CINEMASCOPE FILM

- Non-magnetic and Demagnetised Parts.
- Scrapes both sides of film, magnetic tracks from the back, emulsion from the front.

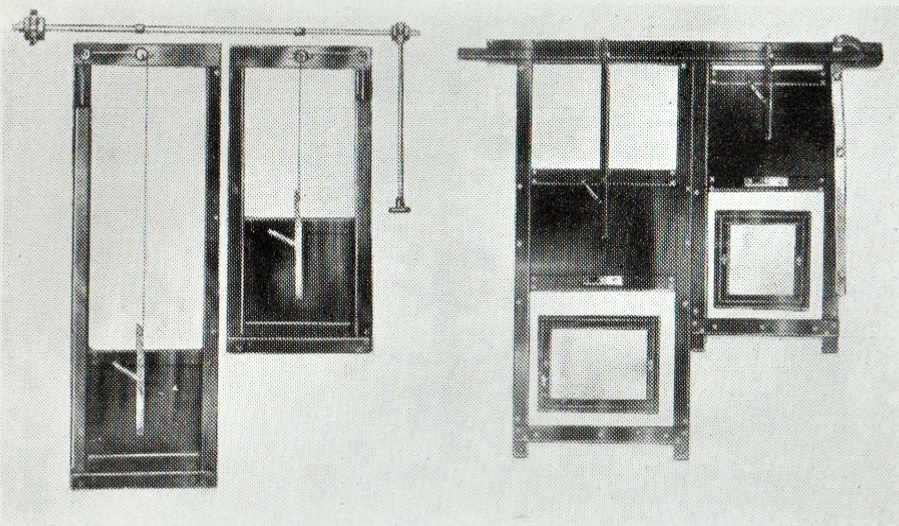
Designed for use with film stock having CinemaScope size perforations, it gives a precision  $\frac{3}{32}$ " between perforation join on the mask line.

Constructed with special non-magnetic parts. Magnetic tracks are easily removed prior to removing the emulsion. Strongly constructed, precision machined and attractively finished in grey polychromatic enamel.

PRICE £12 0 0 each

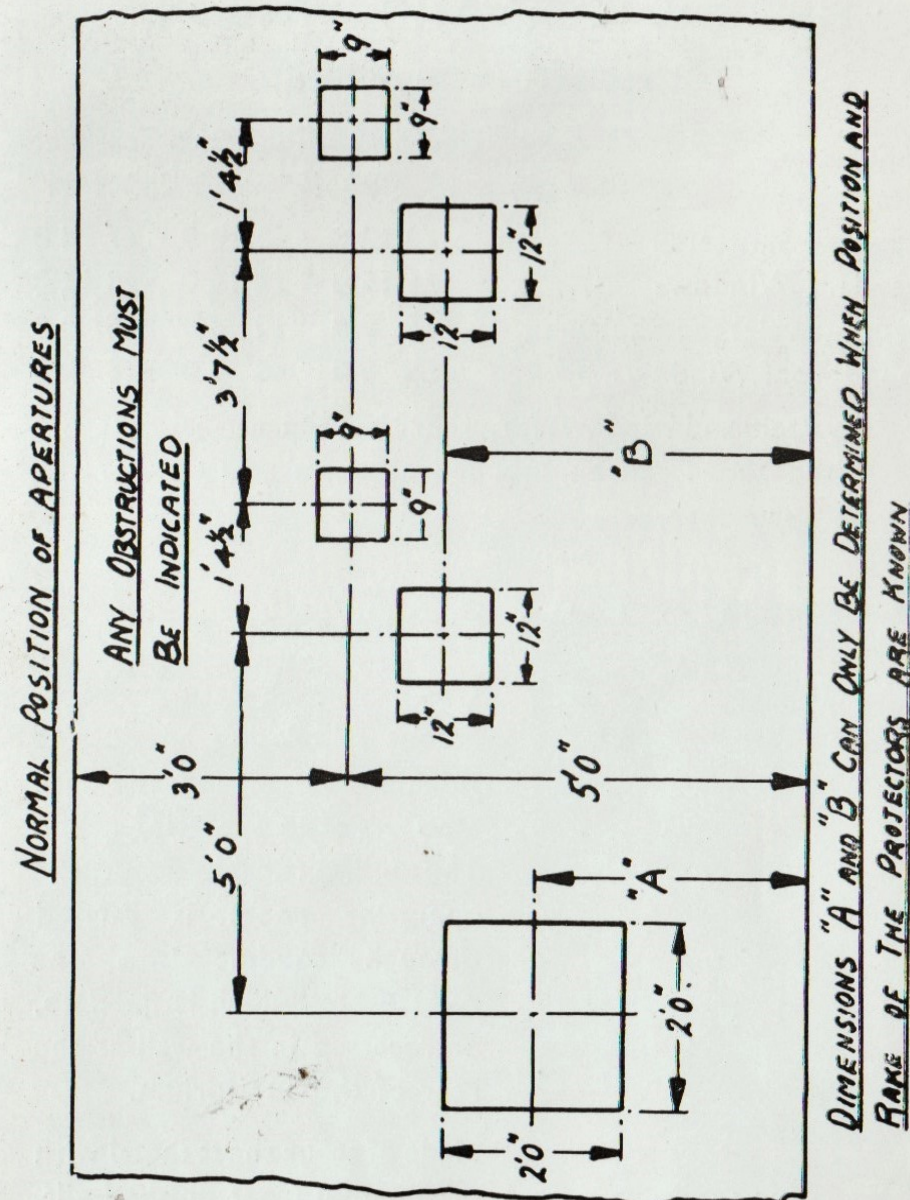
Automatic Film Scraper for use with above £6 16 0 extra.





The Fire Shutters illustrated satisfy the constructional requirements of all licensing authorities. They are made of heavy gauge sheet steel, sliding in substantial steel runners, to suit apertures of varying dimensions.

Two models are available, one with each shutter counterweighted, and a standard model without counterweights.





## FIRE SHUTTERS AND WINDOWS

### SCHEDULE OF PRICES

*Observation Projection Spotlight*

9" × 9" 12" × 12" 24" × 24"

Standard Shutters ... each	£3 12 0	£3 12 0	£7 4 0
Standard Windows ... „	£1 16 0	£1 16 0	£3 12 0
Counterweighted Shutters „	£10 0 0	£10 0 0	£15 0 0
Soundproof Windows „	£5 0 0	£5 0 0	£10 0 0

Shutters and windows for other than the normal sizes listed above can be supplied at extra cost : prices on application.



### RELEASE BOX

Conforms with statutory regulations stipulating an outside release control for the Fire Shutters of an operating room. The pull-off cable from the operating room is carried through conduit into the release box which is fixed to, or recessed in the wall at the rear of the auditorium.

Made of stout sheet metal with ornamental front finished gilt. The front panel is glazed and lettered in red.

PRICE

£2 . 0 . 0

each

## GAUMONT-KALEE HARD COATED PORTHOLE WINDOWS

The perfect glass for the modern  
High Definition Lens

Another contribution by Gaumont-Kalee towards perfect picture presentation. One of the great advancements in lens manufacture, to reduce light-loss by reflection, is the hard-coating of the glass surfaces. Now this technique has been applied to glass for projection parts.

### IMPROVED LIGHT — NO DISTORTION

*Prices*

Not exceeding 5" square ... ..	each	33/9
Over 5" and not exceeding 8" square ...	each	55/0
Over 8" and not exceeding 10" square ...	each	68/9

### "PREMIER" 35mm SPOOLS

for CINEMASCOPE Film

Available in three sizes 15" (2000 ft. approx.) 17" (3000 ft. approx.) and 22" (5000 ft. approx.). Fitted with either a zinc alloy or a plastic hub. Both are non-magnetic and can accommodate steel bushes for the various sizes of projector spindles  $\frac{5}{16}$ ",  $\frac{3}{8}$ ",  $\frac{1}{2}$ " or 9mm. Finished grey enamel. Make of projector must be stated when ordering.

15" ... £1 17 6. : 17" ... £3 0 0. : 22" ... £4 0 0



## The 'PREMIER' Change over Device

Designed to meet the modern requirements of CinemaScope and other wide screen systems.

The device consists of a pair of mechanically controlled cut-offs, with a  $5" \times 3\frac{1}{2}"$  aperture, which can be mounted either vertically or horizontally, in front of the projection aperture. They are independent of the Projectors and do not interfere with the Anamorphic lens or its operation.

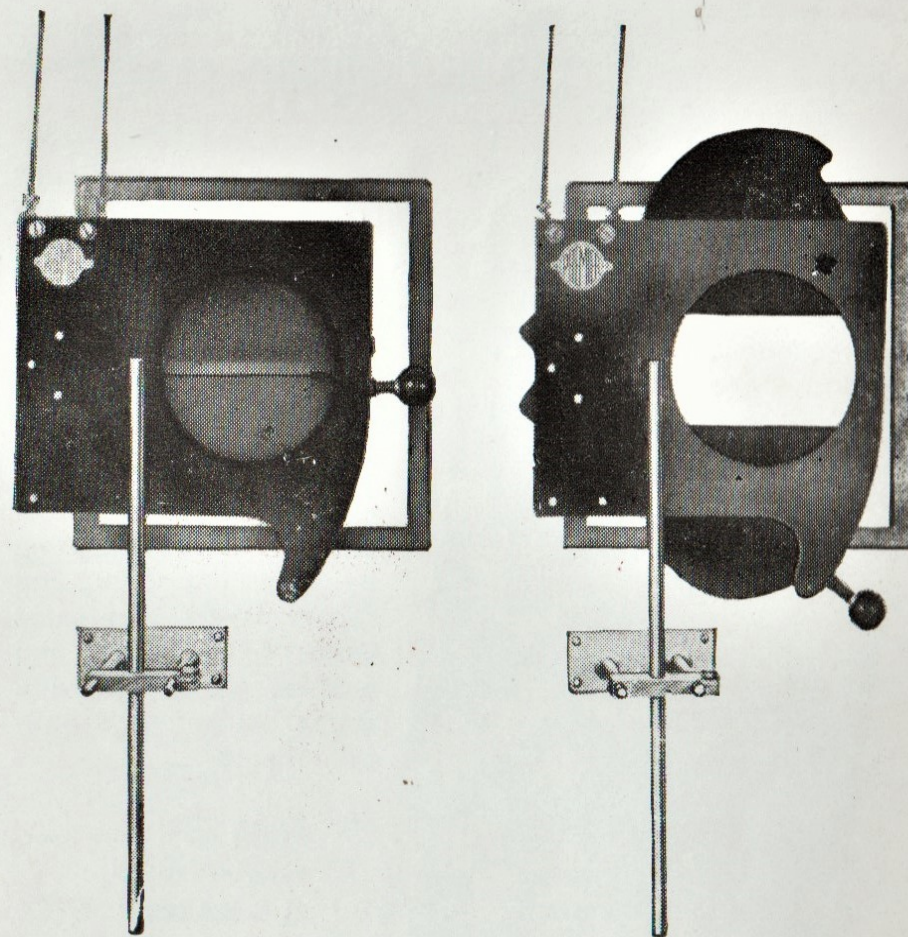
The operator can obtain instantaneous change-over from either cut-off unit. The action is effected by two cables operating coupled actuating plates.

It is strongly constructed and can be easily fitted in the Operating Room ; all that is required are four fixing bolts or screws in the front wall either below or at the side of the projection aperture. The mechanism backplate acts as a shield and prevents stray light passing through the projection aperture.

The cut-off and plates are finished in optical black and adjusting parts in dull nickel, or all black.

*Price £12 12 0 per pair complete.*

for 'CinemaScope' and all Wide Screens

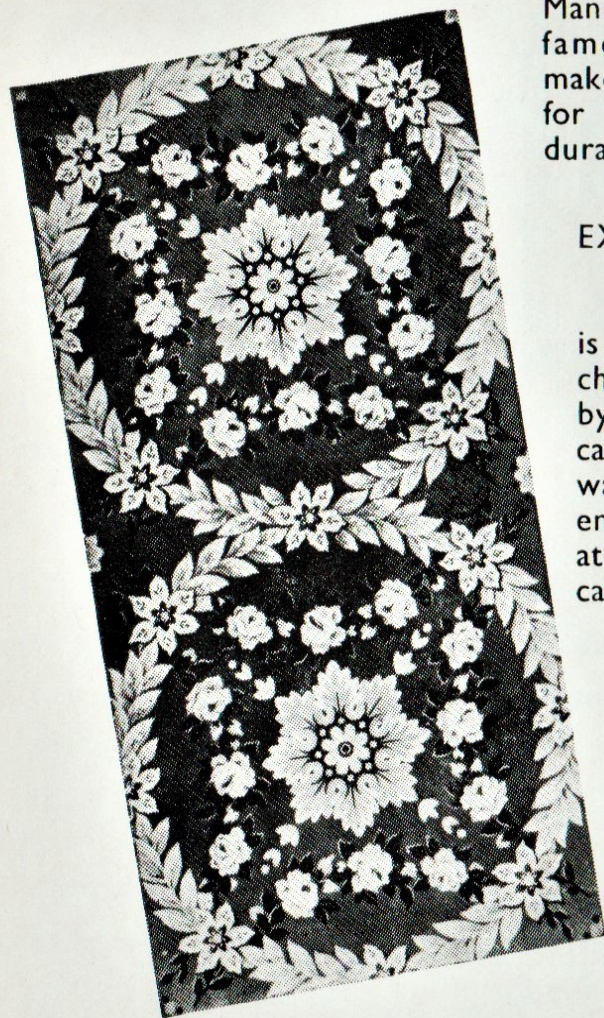


- ★ Instantaneous Changeovers
- ★ Independent of Projectors
- ★ Simply fitted either vertically or horizontally
- ★ No interference with Anamorphic attachment.



# Carpets of Distinction

Selected by experts for their particular qualities and suitability for Theatre use, are obtainable ex-stock from G.B-Kalee.



Manufactured by the most famous British carpet makers, who are renowned for the fine quality and durability of their products.

## EXPERT CARPET

### PLANNING

is at your service free of charge. Careful planning by our designers and carpet layers eliminates waste of materials and enables us to provide attractive and economical schemes.

When you require floor coverings consult :

**G.B-KALEE LTD.**

We can supply  
Hair Cord Carpet  
Coir Matting  
Sisal Matting  
Cork and inlaid Linoleum  
Thermo-plastic Tiles  
Rubber, etc.

Quotations and Schemes supplied free of charge.

## WILTON CARPET

Prices per lineal yard, inclusive of Purchase Tax.

Quality	WIDTH			
	2/4 (18")	3/4 (27")	4/4 (36")	6/4 (54")
W.O. Patterned	63/6	90/7	126/11	190/4
W.I. Patterned	45/5	64/8	90/7	137/0
W.4. Plain	33/10	48/4	67/8	101/4

Manufacturers are now using brand names, such as "Broseley", "Arlington" etc., for their various qualities of carpet. As these differ with each Mill, we are retaining the references W.O., W.I. and W.4. for the easy identification of the equivalent qualities and those mostly used in the Cinema and Theatre.

## UNDERFELT

T/Premier, Good medium quality 54" wide, per yd. **8/0**  
SSH.30, Super, extra thick 54" wide per yd. ... **14/0**

## LINOLEUM

"A" Quality—	Plain Brown	Other Colours
3.20mm thick Per sq. yd.	<b>13/2</b>	<b>14/10</b>
4.50mm thick Per sq. yd.	<b>18/9</b>	<b>20/11</b>

Prices of other qualities and patterned linoleum on request.

## WEB NOSING for Stairs

	White	Coloured
4" wide per yard ...	<b>2/7</b>	<b>3/7</b>
5" wide ,, ,, ...	<b>2/11</b>	<b>3/11</b>
6" wide ,, ,, ...	<b>3/6</b>	<b>4/6</b>

All furnishings can be supplied on Hire Purchase terms if desired.



## "P. & G." Floating Battery EMERGENCY LIGHTING EQUIPMENT

(With trickle charge facilities)

These equipments comply with the Cinematograph Regulations and are particularly suitable for small halls which are not in regular daily use where the emergency load does not exceed 240 watts.

Each equipment comprises a battery of 6 or 12 Plante Closed Top cells in a floor standing cubicle, containing a charger in an upper compartment with switches and meters on the front panel. A white light gives indication that the battery is being 'trickle' charged whilst a green light indicates 'floating' conditions. A hinged door gives access to the battery compartment.

Standard equipments operate from 200/250 volts, 50 cycles, single phase, A.C. mains supply.

Details of the sizes available are given on the opposite page.



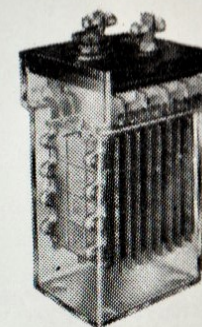
FM64 equipment

Equipment Catalogue Numbers	BATTERY			PRICES (nett.)
	No. and type of cells	Ampere hour capacity in 10 hours	Discharge Load in watts for 3 hours	
FM.63	6 CTX.7	30	86	£74 0 6
FM.64	6 CTX.9	40	120	£78 2 0
FM.123	12 CTX.7	30	172	£113 13 0
FM.124	12 CTX.9	40	240	£121 16 0

Orders and enquiries should include details of :—

- (a) A.C. input supply
- (b) Load (in watts) of emergency circuit

The Closed Top cells are exactly the same as those supplied with the large and more expensive emergency equipments. In addition to a large screwed vent plug, they have a lid which is acid-tight—yet easily removable—a great improvement compared with the fully sealed cell.



### OPERATION

**Normally** When the hall is not in use and the battery has been fully charged, the set must be switched to "trickle charge."

When the hall is in use, the emergency lights are supplied from the mains through a rectifier and the battery is floating across the rectifier output.

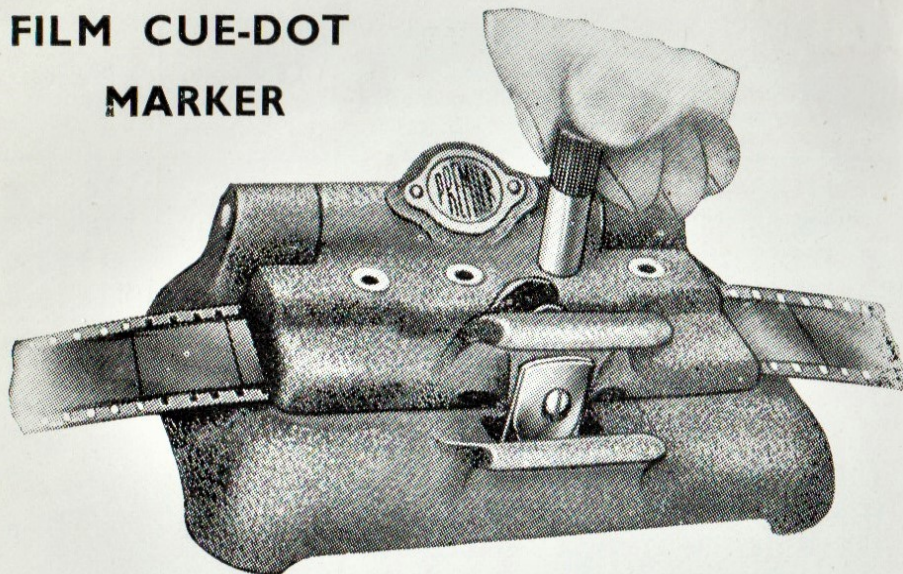
**In  
Emergency** As the battery is connected to the emergency lights whenever they are in use, it will supply them in the event of mains interruption.

**After  
Emergency** As the battery will now be partially or fully discharged depending on the duration of the emergency, it is necessary to commence a "quick charge." (The emergency lights cannot be used whilst the battery is being quick charged because the voltage rises to a level that would burn out the lamps. Cinematograph Regulations do not, in any case, permit this.)

**Periodically** An occasional quick charge should be given to the battery to maintain healthy condition. Normally, it is not necessary to renew the electrolyte throughout the life of the battery but distilled water should be added at intervals to maintain the acid level.



## FILM CUE-DOT MARKER



for **Standard 35mm Release Prints**  
and **CINEMASCOPE Magnetic Film**

Facilitates the safe and accurate scribing of Motor and Change-over Cues on 35mm release prints. Approved and recommended by the K.R.S., and the Film Damage Advisory Committee.

- Eliminates danger of film damage and mutilation.
- Scribes circular mark with Transparent outlines similar to B.S.I. Specification 1492 of 1948.
- Film is located by pins for accurate positioning and held rigidly by clamp.
- Spring tensioned marking tool cannot damage film

### Correct position for Cue Marks.

Change-over Cue Marks are positioned 18 clear frames from the beginning of the RUN-OUT LEADER.

Motor Cue Marks are positioned 10 feet plus 12 picture frames from the beginning of the CHANGE-OVER CUE MARKS. It is imperative that these positions are adhered to when using the Cue-Dot Marker.

**Standard Model** for normal films ... each **£2 17 6**

**Non-magnetic Model** for CinemaScope films  
with magnetic recording ... **£3 17 6**

## ASBESTOS BLANKETS

Available in steel containers for fixing to wall of operating booth. Ready for immediate use in an emergency. Blanket only can be supplied if desired. Complies with all local regulations.

6' 0" × 6' 0" in Metal Container ...	£5 6 0
4' 6" × 6' 0" in Metal Container ...	£4 14 2

## FILM CEMENT

for tri-acetate Safety-base Film Stock.  
"KODAK" Safety Film Cement

2 oz. bottle 2/6 : 8 oz. 5/6 : 1 pint 11/-



Write for illustrated folder  
**GAUMONT-KALEE**  
New Series "S"  
High Definition Lenses

## "LOX-ALL" Universal LAMP LOCK

TYPE A for standard B.C. lampholders  
per dozen **£1 7 0**

TYPE B for all lampholders with Home  
Office shield per dozen **£1 7 0**

**Locking Tools** for types A and B each **3 0**

TYPE C. Cannot be removed until the  
lamp burns out and is broken. per dozen **£1 10 0**

## REFLECTO

For rejuvenating old pitted mirrors. A small quantity rubbed over the surface, polishes the particles embedded in the glass.

per 6 oz. bottle **3 0**



## SLIDES for the Panoramic Screen

The risk of screen masking topping or tailing your advertisements or messages projected by slides has been removed with the new

### " MORROPAQUE " SLIDES

Now supplied ruled to give proportions suitable for 2:1, 1.9:1, 1.6:1 and 1.2:1 ratios.

Price 3/6 box of one dozen.

## TICKETS

All prices stocked in standard range of colours. Nautched and double numbered.

Admission	Complimentary		
Under 10 rolls	...	per roll	2/5
Over 10 rolls	...	" "	1/7
75 Roll Lots	...	... £5	11 3

Quantities can be made up in assorted prices

## Specially Printed Tickets

Not less than 5 rolls	...	per roll	6/6
" " " 10	...	" "	4/8
" " " 25	...	" "	3/4
" " " 50	...	" "	2/7
" " " 100	...	" "	2/1
" " " 200	...	" "	1/9½
" " " 250	...	" "	1/8

For every change of wording or price 7/6 extra per change.



Head Office :

MORTIMER HOUSE  
37-41, Mortimer Street,  
London, W.1.

Telephone : MUSEUM 5432

London Branch and Showroom :

National House,  
60-66, Wardour Street, W.1.  
Telephone : GERRARD 9531

Branches at :

BELFAST	43, Donegall Street. Telephone 27065
BIRMINGHAM	57, John Bright Street. Telephone Midland 2351
CARDIFF	9, Park Lane. Telephone 28861
GLASGOW	211, Hope Street. Telephone Douglas 0601
LEEDS	17, Wellington Street. Telephone 20597
LIVERPOOL	11, Commutation Row. Telephone North 1896-7
MANCHESTER	5, The Parsonage. Telephone Blackfriars 1428
NEWCASTLE	2, Cross Street. Telephone 23038

Prices quoted throughout this booklet are subject to alteration and orders are only accepted upon the terms of our printed conditions, copies of which are available on application.



**STEREOPHONIC  
SOUND**

BY GAUMONT-KALEE

