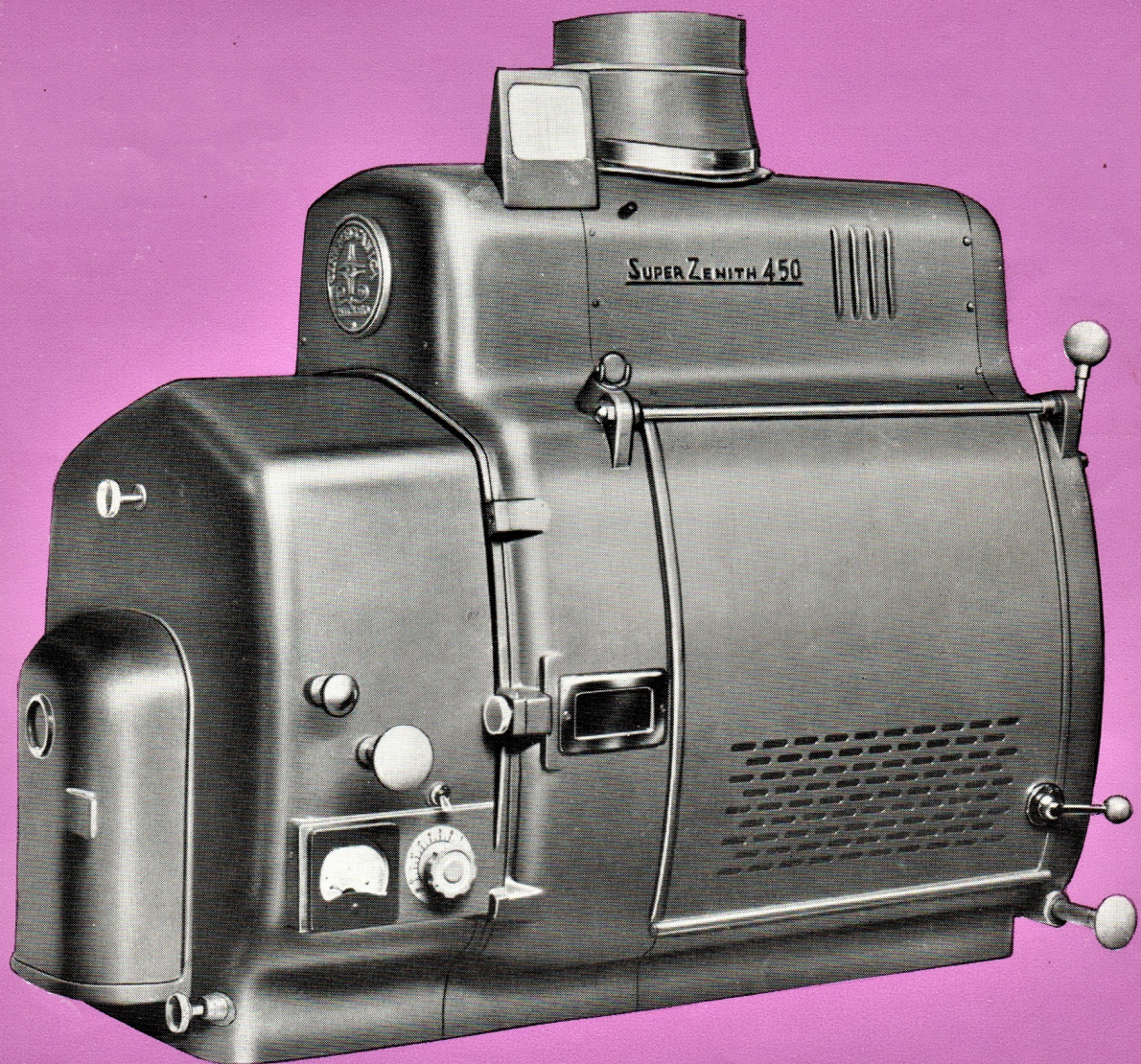
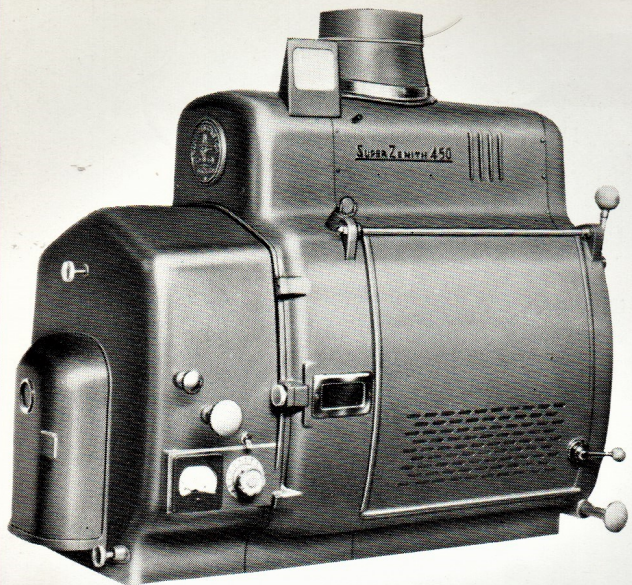


# CINEMECCANICA ARC LAMPS



**RANK KALEE**





## **SUPER ZENITH '450' ARC LAMP**

**60-120 AMPERES**

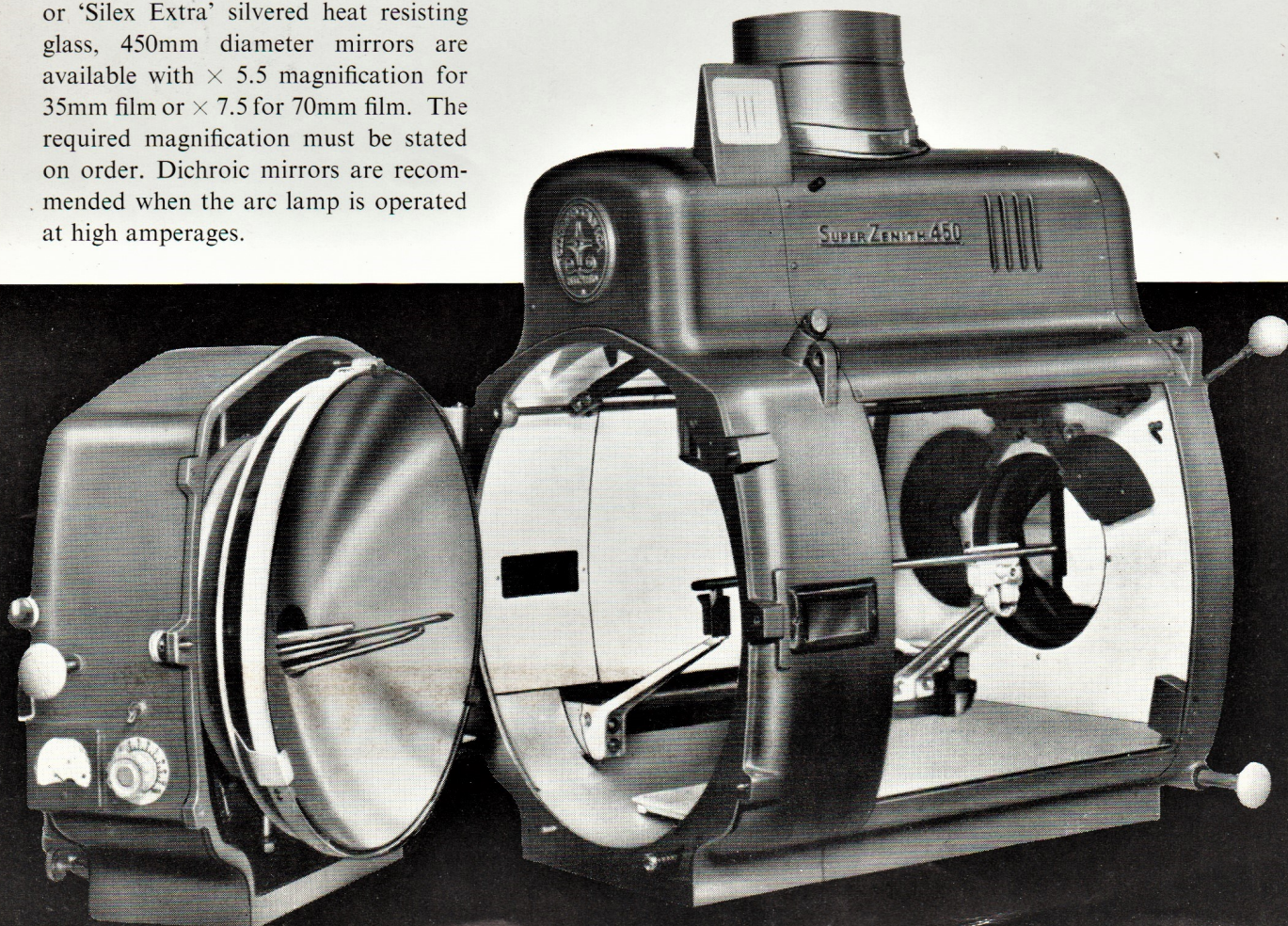
**Perfect presentation  
for every film ratio  
... 70mm and 35mm**

This high power arc lamp is specially designed for 70mm and 35mm film presentation in the large theatre, the optical efficiency of the design ensuring maximum light output. Interchangeable 450mm (18") diameter mirrors with differing magnification factors are available for both 70mm and 35mm film, and the angular burning negative carbon, together with rigidly located positive carbon holder, present minimum light obscuration. Carbon feed is automatic with fine potentiometer speed control, while either carbon carriage can be manually operated independently.

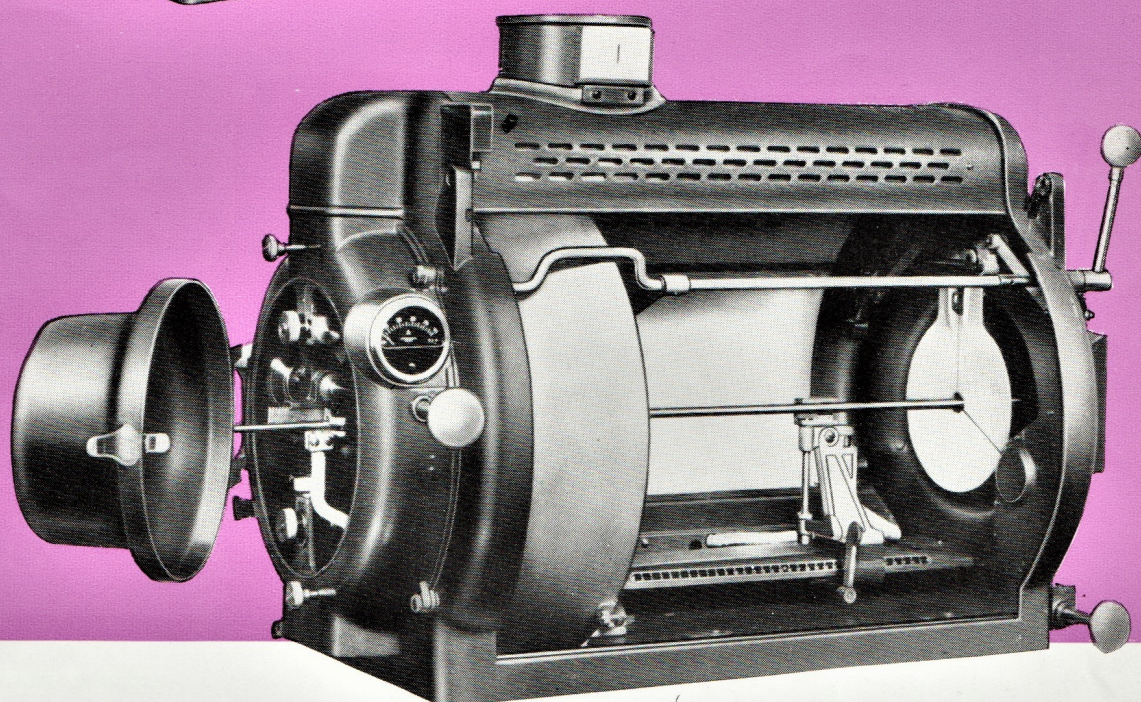
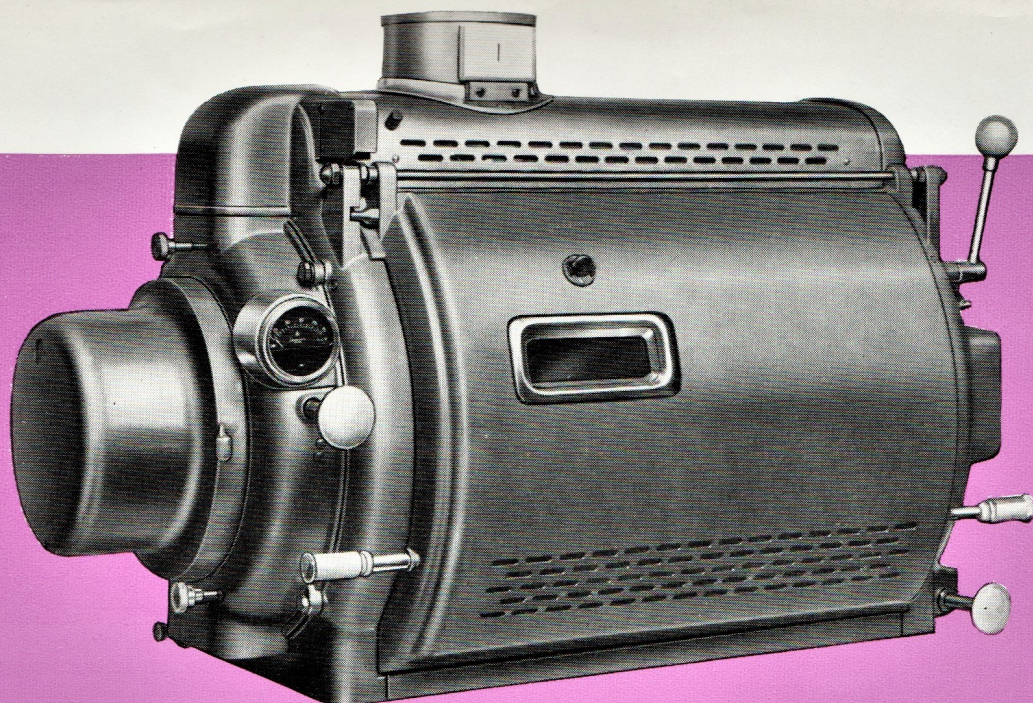
The lamphouse is generously proportioned to house the high-power arc lamp, constructed with a cast aluminium frame, and sheet steel double-skin casing and doors, for air cooling. A high-speed twin blowers extractor fan, with independent motor, keeps the lamphouse at a low temperature, while stability of the flame and arc crater is also controlled by the air flow. A magnetic flame control is also incorporated.

The rear section of the lamphouse which opens completely, contains the negative carbon feeding system, mirror holder, magnetic flame control, ammeter, and operating controls. This feature facilitates changing mirrors for 70mm and 35mm film, besides making for easy maintenance and cleaning of the interior. A mirror shield linked with dowsers gives full protection to the reflector when striking the arc. An arc inspection window is fitted on both sides of the lamphouse, and an arc image screen on the operating side.

**MIRRORS** Dichroic heat filter type, or 'Silex Extra' silvered heat resisting glass, 450mm diameter mirrors are available with  $\times 5.5$  magnification for 35mm film or  $\times 7.5$  for 70mm film. The required magnification must be stated on order. Dichroic mirrors are recommended when the arc lamp is operated at high amperages.







## ZENITH '420' ARC LAMP

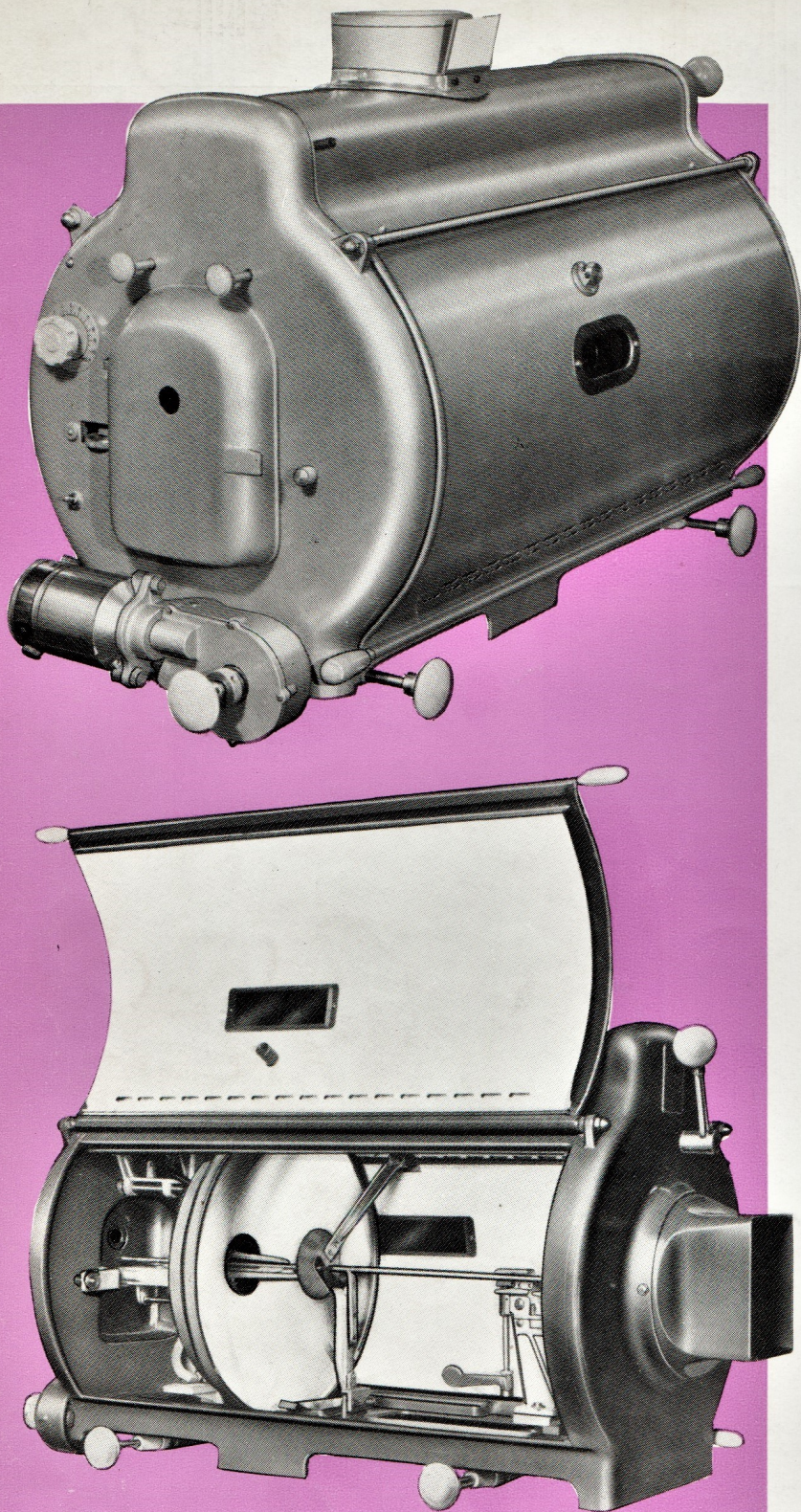
### 50-90 AMPERES

The Zenith '420' is a modern design high efficiency arc lamp, for high intensity projection up to 90 amperes. Interchangeable 420mm (16½") mirrors, with differing magnification factors, are available for 35mm or 70mm films. The horizontal burning carbons are optically aligned throughout the entire trim. Carbon feed is automatic and continuous, with a constant arc gap. Both positive and negative carbon carriages can be manually positioned independently. The lamphouse will accommodate a 500mm (20") positive carbon. A mirror shield linked with the dowser gives full protection to the reflector when striking the arc. Adjustments are provided for the positioning of the negative carbon and the mirror, while an energised magnetic control ensures a steady arc flame.

The lamphouse is of double skin construction and efficiently air-cooled by convection. Large fully opening doors facilitate cleaning and maintenance, and fitted on the operating side is an arc image screen and an ammeter.

**MIRRORS** Dichroic heat filter type, or 'Silex Extra' silvered heat resisting glass 420mm diameter mirrors are available with  $\times 6.5$  magnification for 35mm film, or  $\times 8$  for 70mm film. The required magnification must be stated on order. Dichroic mirrors are recommended when the arc lamp is operated at high amperages.





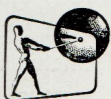
## ZENITH 'V' ARC LAMP 30-80 AMPERES

The Zenith 'V' arc lamp is for high intensity projection up to 80 amperes, and can be supplied for D.C., or A.C. use. A high efficiency optical system with 350mm (13 $\frac{3}{4}$ ") diameter mirror ensures maximum light output. The motorised positive and negative carbon feed is by a common lead screw with a fixed ratio of 2.3:1 for D.C., High Intensity carbons, and 1:1 for A.C.

Motor speed is adjusted by the potentiometer. Both carbon carriages can be independently operated. A common positive/negative feed control is fitted to the motor gear box at the rear of the lamphouse. Adjustments are provided for vertical and horizontal positioning of the negative carbon, and the reflector, while the position of the mirror can also be adjusted in relation to the projector gate. The mirror holder assembly is fitted with an energised magnetic arc flame control, and an arc image screen is fitted on the operating side of the lamphouse. A mirror shield linked with dowser protects the reflector when striking the arc. Adequate cooling is obtained by convection, aided by the spacious interior of the lamphouse. Positive carbons 510mm (20") long, and 305mm (12") negative, can be used in the arc lamp.

**MIRRORS** Dichroic heat filter type, or 'Silex' Extra' silvered heat resisting glass, or standard silvered glass 350mm (13 $\frac{3}{4}$ ") diameter mirrors can be supplied for the Zenith 'V' arc lamp.

*Note: Illustrations in this catalogue should not be taken as binding; alterations are made as occasion arises.*



# RANK KALEE

A DIVISION OF  
THE RANK ORGANISATION

WOODGER ROAD • LONDON W12 • ENGLAND

BRANCHES AND AGENTS THROUGHOUT THE WORLD