



**SHIP**  
ELECTRIC ARC LAMP  
**CARBONS**  
BRITISH MADE

**CINEMATOGRAPH**  
PROJECTION CARBON  
**PRICE LIST**

OCTOBER 1952

Phone  
GERrard  
9376-8

*Subject to withdrawal without notice*

Telegrams  
KARBONIMPO  
PHONE, LONDON

CHAS. H. CHAMPION & CO. LTD. 60-66 WARDOUR ST. LONDON, W.I.



## **THE NAME BEHIND THE PRODUCT**

- Ship Carbons are produced in England. Only the highest grades of material are employed in their manufacture.
- In design they are the result of a long and intimate experience in light projection and its requirements.
- When you select Ship Carbons for your arc you have behind you an organisation of scientists, craftsmen and business men whose united object is to see that you get a good product backed by an intelligent and courteous service.
- Ship Carbons have set a standard of reliability that is accepted wherever carbons are used.

---

Your Ship Carbon Service Engineer will at all times be pleased to assist you in any problems concerning the projection of light.

## **CONDITIONS OF SALE**

1. Delivery shall be packing and carriage free by goods train or supplier's van. Additional costs incurred by the use of other transport may be charged to the customer.
2. The supply of carbons in lengths other than those listed will be considered subject to the following conditions:—
  - (a) The minimum price will be that of the shortest length listed in the type required.
  - (b) Carbons longer than the minimum length shown under each type will be charged at the next longer length listed.
  - (c) Carbons longer than the maximum length listed cannot be supplied.
3. The prices shown are not subject to any cash or settlement discount.
4. Where orders are placed for one or more complete Unit Packs for delivery at one time to one address (see Standard Factory Packed Units within) the list prices shown herein are subject to the customary Discount of 5%.

Where an order necessitates breaking a standard Unit Pack, this Discount will not be allowed on the quantity of carbons thus required to be repacked.



## SHIP

## LOW INTENSITY

## LUXO

## POSITIVE CORED No. 24

DIAMETER	8"	9"	10"	12"
10 mm.	46/-	53/-	58/-	70/-
11 mm.	54/-	62/-	68/-	82/-
12 mm.	63/-	72/-	79/-	95/-
13 mm.	72/-	82/-	90/-	108/-
14 mm.	80/-	91/-	101/-	121/-

## NEGATIVE C/C CORED No. 25

DIAMETER	8"	9"
7 mm.	25/-	29/-
8 mm.	30/-	34/-
9 mm.	37/-	43/-
10 mm.	46/-	53/-

## NEGATIVE C/C SOLID No. 28

DIAMETER	8"	9"
7 mm.	25/-	29/-
8 mm.	30/-	34/-
9 mm.	37/-	43/-
10 mm.	46/-	53/-

## SHIP

## SPOT LIGHT

## STAGE ARC

## POSITIVE CORED

DIAMETER	6"	8"	10"	12"
16 mm.	57/-★	77/-†	95/-†	115/-†
18 mm.	75/-★	101/-†	126/-†	152/-†
20 mm.	89/-★	118/-†	148/-†	179/-†
22 mm.	105/-★	140/-†	176/-†	212/-†
25 mm.	146/-★	195/-†	244/-†	293/-†

## NEGATIVE

	COPPER CORED OR SOLID	CORED AND COPPER COATED		
DIAMETER	6"	8"	6"	8"
10 mm.	33/-	44/-	61/-	81/-
11 mm.	39/-	52/-	68/-	90/-
12 mm.	44/-	59/-	74/-	100/-
13 mm.	47/-	63/-	—	—
14 mm.	50/-	68/-	—	—
16 mm.	57/-★	77/-†	—	—

## WHITE FLAME

## CORED A.C.

DIAMETER	6"	8"	10"	12"
12 mm.	53/-	72/-	90/-	108/-
14 mm.	69/-	92/-	115/-	139/-
16 mm.	88/-★	116/-†	146/-†	175/-†
18 mm.	113/-★	150/-†	188/-†	226/-†
20 mm.	130/-★	173/-†	217/-†	261/-†
22 mm.	157/-★	210/-†	262/-†	315/-†



# PRICE LIST

## SHIP

### HIGH INTENSITY

#### SUPREX & SUPREXA

POSITIVE COPPER COATED						
Diameter	8"	10"	12"	14"	16"	18"
7 mm.	74/-	92/-	112/-	130/-	149/-	167/-
8 mm.	81/-	101/-	121/-	141/-	162/-	182/-
9 mm.	92/-	114/-	138/-	161/-	184/-	207/-
10 mm.	100/-	124/-	150/-	175/-	201/-	225/-
11 mm.	112/-	138/-	168/-	196/-	224/-	251/-
12 mm.	132/-	165/-	198/-	—	—	—

#### HILUX

POSITIVE PLAIN				
DIAMETER	12"	18"	20"	22"
9 mm.	85/-	127/-	141/-	156/-
11 mm.	128/-	192/-	213/-	235/-

† 13.6 mm.	180/-	269/-	299/-	329/-
† 16 mm.	241/-	362/-	402/-	443/-

#### STANDARD FACTORY PACKED UNITS

All carbons are normally packed 50 pieces to a carton, 5 cartons (250 pieces) to a Unit Pack. Exceptions are listed below.

★ Carbons marked thus are packed 50 pieces to a carton, 2 cartons (100 pieces) to a Unit Pack.

† Carbons marked thus are packed 25 pieces to a carton, 4 cartons (100 pieces) to a Unit Pack.

PRICE  
PER  
100 PIECES

#### SUPREX & SUPREXA

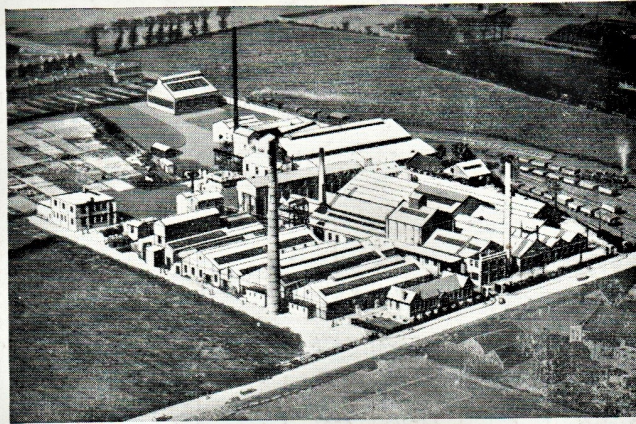
NEGATIVE COPPER COATED				
DIAMETER	6"	8"	9"	12"
6 mm.	38/-	50/-	57/-	76/-
6.5 mm.	47/-	62/-	70/-	95/-
7 mm.	47/-	62/-	70/-	95/-
8 mm.	47/-	62/-	70/-	95/-
9 mm.	56/-	74/-	83/-	—
10 mm.	61/-	81/-	91/-	—
11 mm.	68/-	90/-	101/-	—
12 mm	74/-	100/-	112/-	—

#### ALTERNALUX

COPPER COATED A.C.			
DIAMETER	8"	10"	12"
6 mm.	86/-	108/-	130/-
7 mm.	86/-	108/-	130/-
8 mm.	95/-	119/-	143/-
9 mm.	110/-	137/-	164/-



**SHIP**  
**BRITISH MADE**  
**CARBONS**



*Aerial view of Ship Carbon  
Factory at Chadwell Heath*

Supplies of Ship Carbons  
are obtainable from all  
the leading Supply Houses

Supplied by

**PATHE EQUIPMENT LTD.**

50-54 BEAK STREET

LONDON, W.1

Telephone: GERrard 1544